



20 Coppice Gate Beaulieu Road, Dibden Purlieu

Guide Price £195,000



ANTHONY JAMES
PROPERTIES



20 Coppice Gate Beaulieu Road

Dibden Purlieu, Southampton

A beautifully presented first floor apartment offered for sale with NO ONWARD CHAIN and located within the heart of Dibden Purlieu Village. Internally there are two double bedrooms, a lounge/dining room, a well appointed kitchen, an ensuite and a stylish shower room. In addition to this the development benefits from a spacious communal lounge with kitchen facilities, guest accommodation (nominal charge) and generous wrap around gardens within the outside space. Parking spaces can be allocated for an annual charge.

Council Tax band: D

Tenure: Leasehold

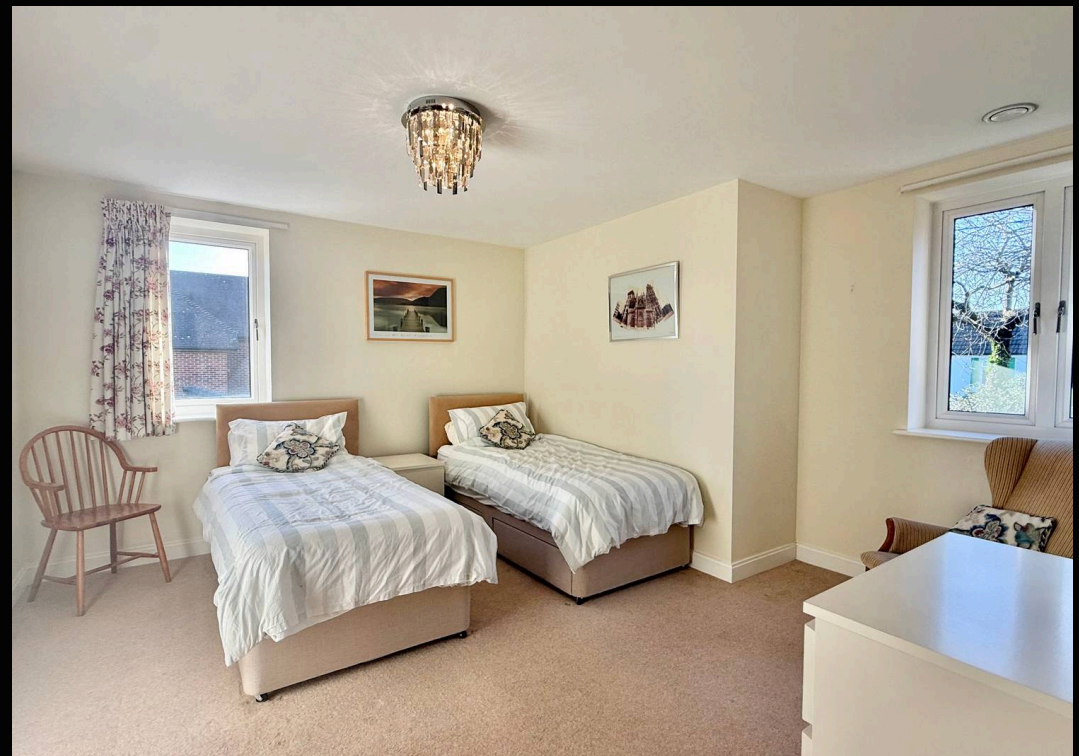


1 Southward House
Dibden Purlieu SO45 4PT

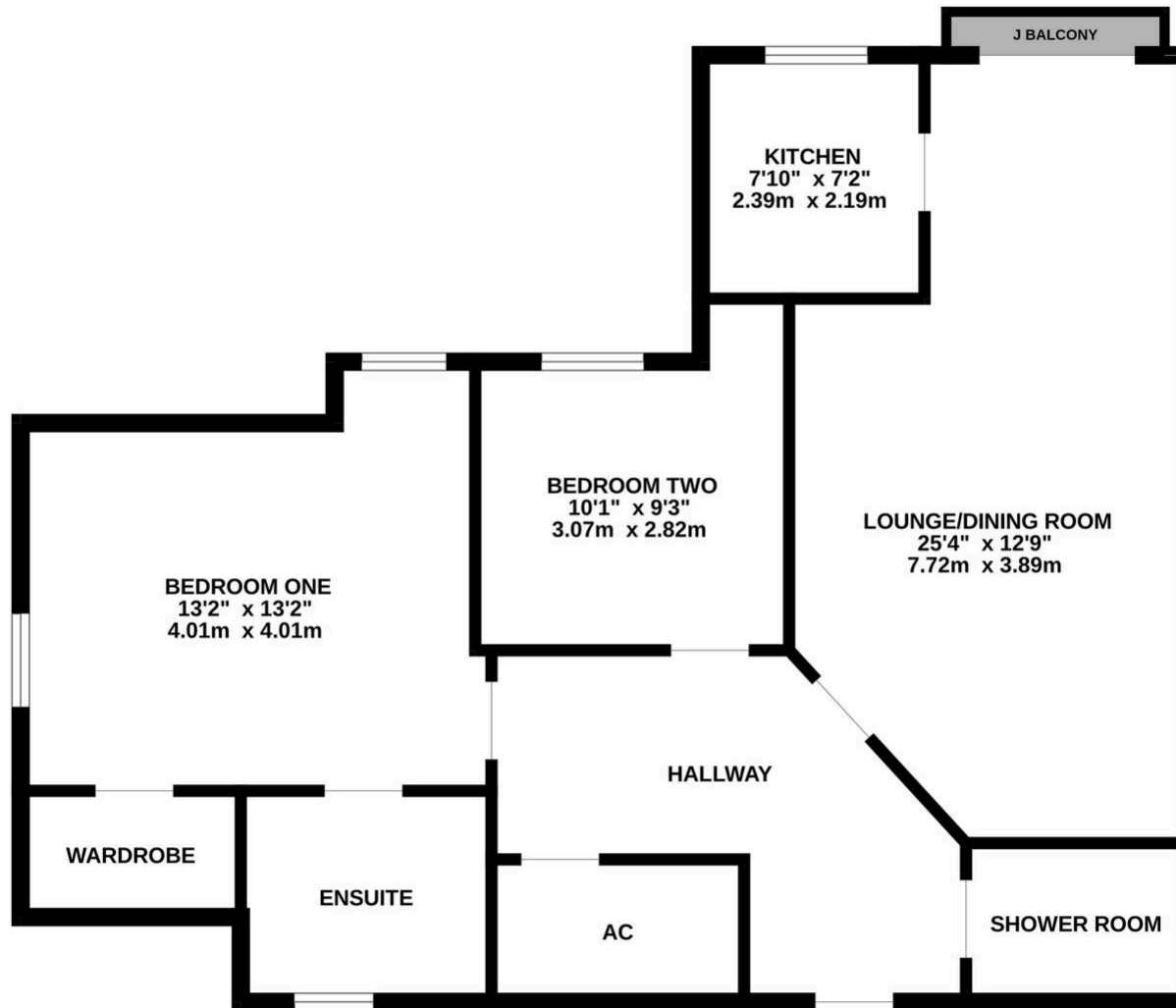


T: 02380 844405

info@anthonyjamesproperties.co.uk



GROUND FLOOR
885 sq.ft. (82.2 sq.m.) approx.



TOTAL FLOOR AREA : 885 sq.ft. (82.2 sq.m.) approx.

Whilst every attempt has been made to ensure the accuracy of the floorplan contained here, measurements of doors, windows, rooms and any other items are approximate and no responsibility is taken for any error, omission or mis-statement. This plan is for illustrative purposes only and should be used as such by any prospective purchaser. The services, systems and appliances shown have not been tested and no guarantee as to their operability or efficiency can be given.

Made with Metropix ©2024