

Stroud Road, Shirley, Solihull, B90 2JU

Guide Price £350,000

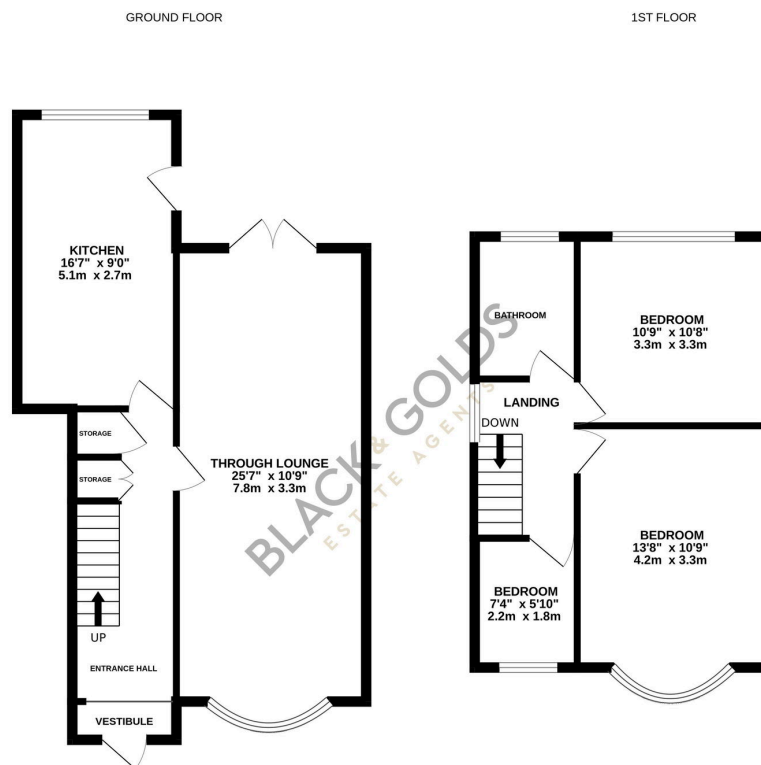
3 1 1



A well-presented three-bedroom family home situated in the popular residential area of Stroud Road, B90. Viewings Highly Recommended. NO UPWARD CHAIN

Key Features

- Three-bedroom detached family home
- Spacious through lounge with access to rear garden
- Bright breakfast kitchen with ample storage
- Two double bedrooms and one single
- Family bathroom to first floor
- Entrance hallway with understairs storage
- Off-road parking to front aspect
- Low maintenance rear garden
- Convenient location for local amenities and schools



Whilst every attempt has been made to ensure the accuracy of the floorplan contained here, measurements of doors, windows, rooms and any other items are approximate and no responsibility is taken for any error, omission or mis-statement. This plan is for illustrative purposes only and should be used as such by any prospective purchaser. The services, systems and appliances shown have not been tested and no guarantee as to their operability or efficiency can be given.
Made with Metroplan ©2025