



Guide Price
£280,000

Freehold

3x  2x  2x 

**The Street, Ash, Kent,
CT3**

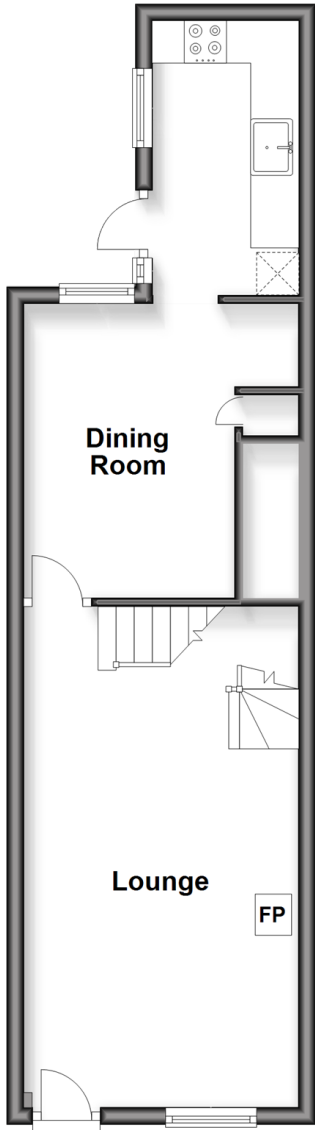
OVER 60?

Secure this property
for up to **59% less!**

Wards
Helping you move forwards

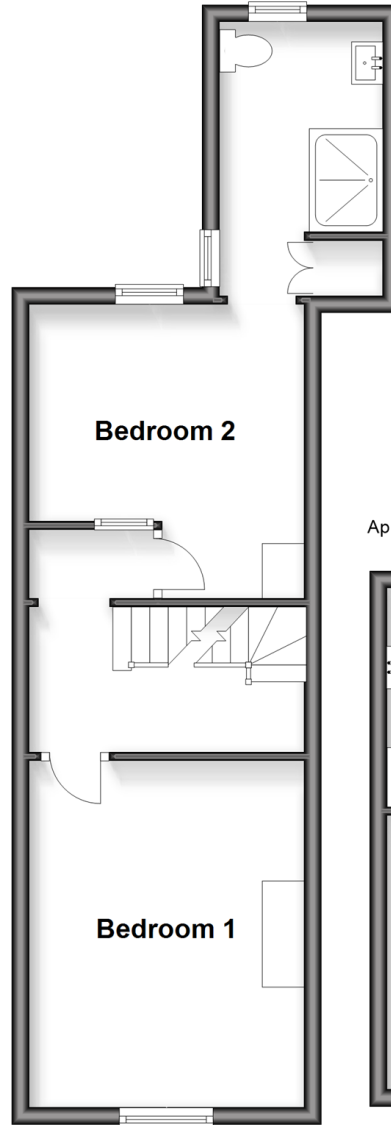
Split Level Ground Floor

Approx. 36.7 sq. metres (394.6 sq. feet)



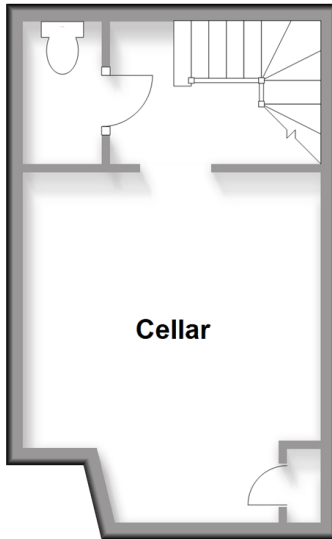
Split Level First Floor

Approx. 37.2 sq. metres (400.5 sq. feet)



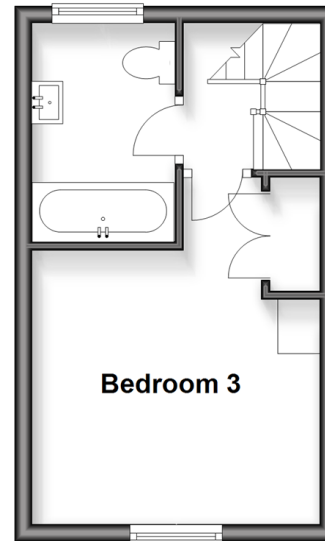
Basement

Approx. 19.9 sq. metres (214.7 sq. feet)



Second Floor

Approx. 20.2 sq. metres (217.0 sq. feet)



Accommodation

GROUND FLOOR

Lounge: 19'2 x 11'2 (5.85m x 3.41m)

Dining Room: 11'4 x 10'3 (3.46m x 3.13m)

Kitchen: 11'2 x 5'7 (3.41m x 1.70m)

BASEMENT

Cellar: 12'8 x 11'4 (3.86m x 3.46m)

Separate Toilet

FIRST FLOOR

Landing

Bedroom 1: 13'2 x 11'1 (4.02m x 3.38m)

Bedroom 2: 11'9 x 10'8 (3.58m x 3.25m)

En Suite Shower Room: 10'9 x 6'4 (3.28m x 1.93m)

SECOND FLOOR

Landing

Bedroom 3: 11'2 x 10'6 (3.41m x 3.20m)

Bathroom

OUTSIDE

Courtyard Garden



Main features

- Period style property set over 4 floors
- Beautifully presented throughout
- Stunning feature log burner in lounge
- Fantastic village location with good links to Canterbury and the Kent coast
- Adaptable and versatile space to suit and adapt to your needs

Nearest Schools

Primary Schools: Cartwright and Kelsey C of E Primary 0.2 miles, Eastry C of E Primary 2.4 miles, Preston Primary 2.6 miles
 Secondary Schools: Spires Academy 6.0 miles, St Anselm's Catholic School 7.7 miles

Transport Information

Train Stations: Adisham 4.2 miles, Bekesbourne 4.2 miles, Aylesham 4.8 miles

Address

The Street, Ash, Kent, CT3

Directions

For directions to this property please contact us.



Wards
Helping you move forwards

Call Canterbury Branch 01227 766669 ■ wardsof Kent.co.uk



■ Through a Homewise Home For Life Plan people aged 60+ can secure this property for up to 59% less, by purchasing a Lifetime Lease



10348858/20260429/JT/JT