



Pittis

Price

£1,000 PCM

Fees Apply



Available 06/06/26

Summerhill Close
Sandown PO36

Pittis
Helping you move forwards



Main Features

- Two Bedrooms
- Parking Space
- Garden
- Long Let
- Deposit Alternatives
- June Move In



Deposit required is £1,153.85
Isle of Wight - Council Tax Band Tax Band B

Renting a property is a big commitment and we recommend that you visit the local authority website and these websites which offer helpful information and advice about letting

www.gov.uk/government/publications/how-to-rent

www.gov.uk/private-renting

www.pittis.co.uk/renting/tenancy-fees-individuals/

www.gov.uk/green-deal-energy-saving-measures

Call Ryde 01983 563785 ■ pittis.co.uk

IMPORTANT INFORMATION: Please contact our Lettings Team who will confirm the total costs involved in renting this property. For clarification, we wish to inform the prospective tenant that we have prepared these details as a general guide. The agent has not carried out a detailed survey nor tested the services, appliances, or specific fittings (unless otherwise stated), and no warranty can be given as to their condition. All room measurements are taken at floor level. We strongly recommend that all the information which we provide about the property is verified by yourself and your advisers. The contents of this publication are © Pittis, 2015. Pittis is a trading name of Arun Estates Limited Registered in England No. 2597969

Accommodation

Hallway

Kitchen 1.9m x 2.3m

Lounge/Diner 2.5m x 4.4m

Cloakroom 1.9m x 0.8m

Upstairs Landing

Bedroom One 3.37m x 2.9m

Bathroom 1.9m x 2.8m

Bedroom Two 2.3m x 3.2m

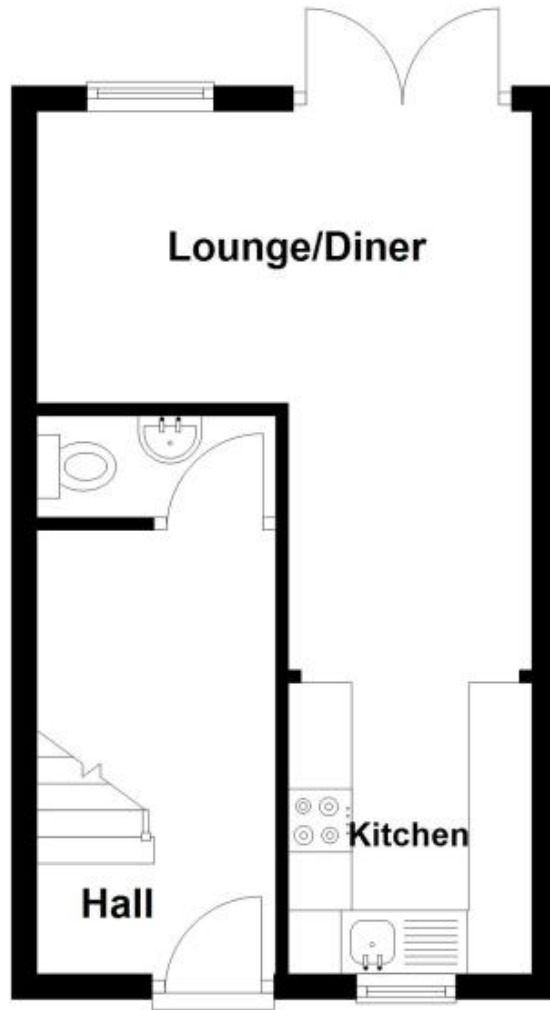
Driveway

Garden



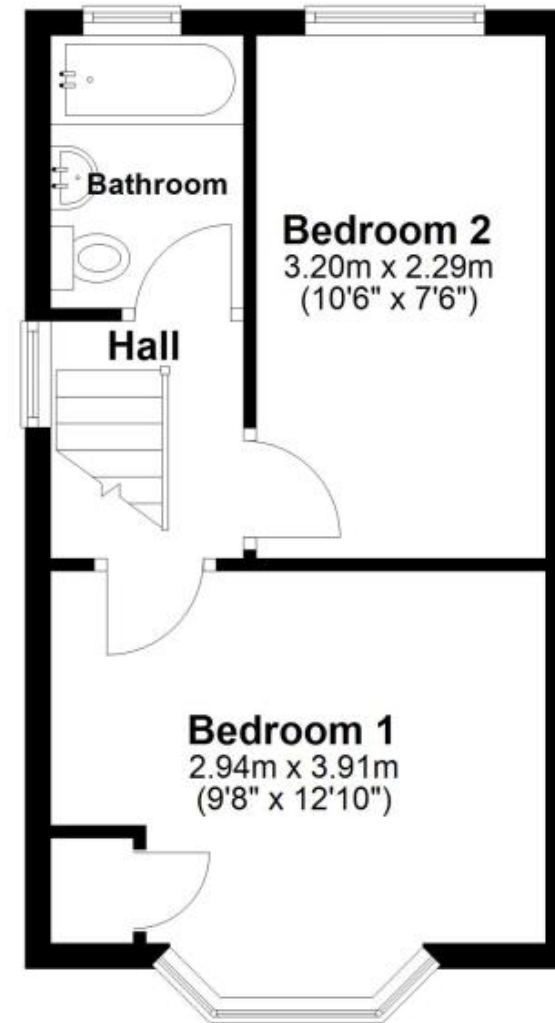
Ground Floor

Approx. 26.6 sq. metres (286.8 sq. feet)



First Floor

Approx. 28.3 sq. metres (304.7 sq. feet)



Total area: approx. 55.0 sq. metres (591.5 sq. feet)