

Aldebury Road

M Maidenhead • Berkshire • SL6 7HE

Guide Price: £435,000



coopers
est 1986

Aldebury Road

Maidenhead • Berkshire • SL6 7HE

A well presented three bedroom end terrace house situated on Aldebury Road, a sought after residential road in Maidenhead. Ideally located within close proximity for local shops, schools, and green spaces, and is within easy reach of transport links including Furze Platt railway station and Maidenhead railway station (Elizabeth Line). The ground floor of the property comprises spacious hallway with doors leading to the W/C, 22ft sitting/dining room and 10ft kitchen. To the first floor is the 12ft main bedroom with fitted wardrobes, 10ft second bedroom, 9ft third bedroom and family bathroom. Outside, the property enjoys private front and rear gardens, with the added benefit of a garage in a nearby block, ideal for parking or additional storage.

Three bedroom house

End terrace

Close to local amenities

Sought after location

22ft sitting/dining room

10ft kitchen

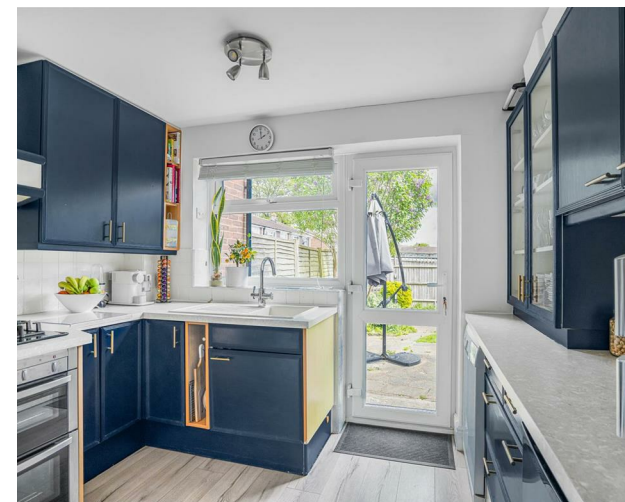
12ft main bedroom with fitted wardrobes

10ft second bedroom

15ft garage

Private rear front & rear gardens

These particulars are intended as a guide and must not be relied upon as statements of fact. Your attention is drawn to the Important Notice on the last page.





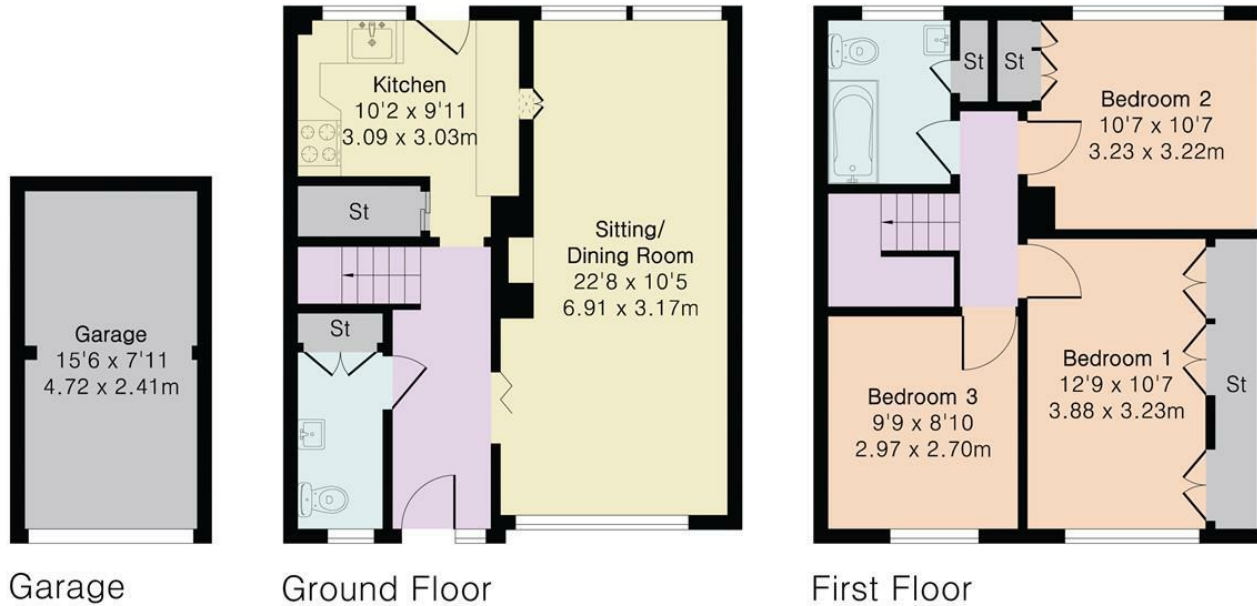
Aldebury Road, Maidenhead, SL6

Main House Area = 911 sq ft / 84.6 sq m

Garage Area = 122 sq ft / 11.3 sq m

Total Area = 1033 sq ft / 95.9 sq m

For Identification only - Not to scale



Garage

Ground Floor

First Floor

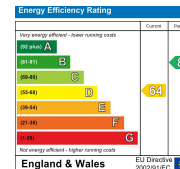


Floor plan produced in accordance with RICS Property Measurement 2nd Edition. Although Pink Plan Ltd ensures the highest level of accuracy, measurements of doors, windows and rooms are approximate and no responsibility is taken for error, omission or misstatement. These plans are for representation purposes only and no guarantee is given on the total square footage of the property within this plan. The figure icon is for initial guidance only and should not be relied on as a basis of valuation.



42 Queen Street, Maidenhead,
SL6 1HZ
maidenhead@coopersresidential.co.uk

CoopersResidential.co.uk



Important Notice: These particulars, whilst believed to be accurate are set out as a general outline only for guidance and do not constitute any part of an offer or contract. Intending purchasers should not rely on them as statements or representation of fact, but must satisfy themselves by inspection or otherwise has the authority to make or give any representation or warranty in respect of the property.