



Saddleback Road, Shaw, SN5 5YB

Asking Price £258,750

- New to the Market
- Two Double Bedrooms
- Garage
- No Onward Chain
- Spacious Sitting Room
- Bathroom Suite
- Driveway Parking for Two Cars
- Fitted Kitchen, Including Appliances
- Enclosed Low-Maintenance Rear Garden
- Ideal First Time Purchase or Investment

We are delighted to offer to the market this beautifully positioned, two-bedroom semi-detached house in the highly sought-after area of Shaw, Swindon. The property is conveniently being sold with no onward chain.

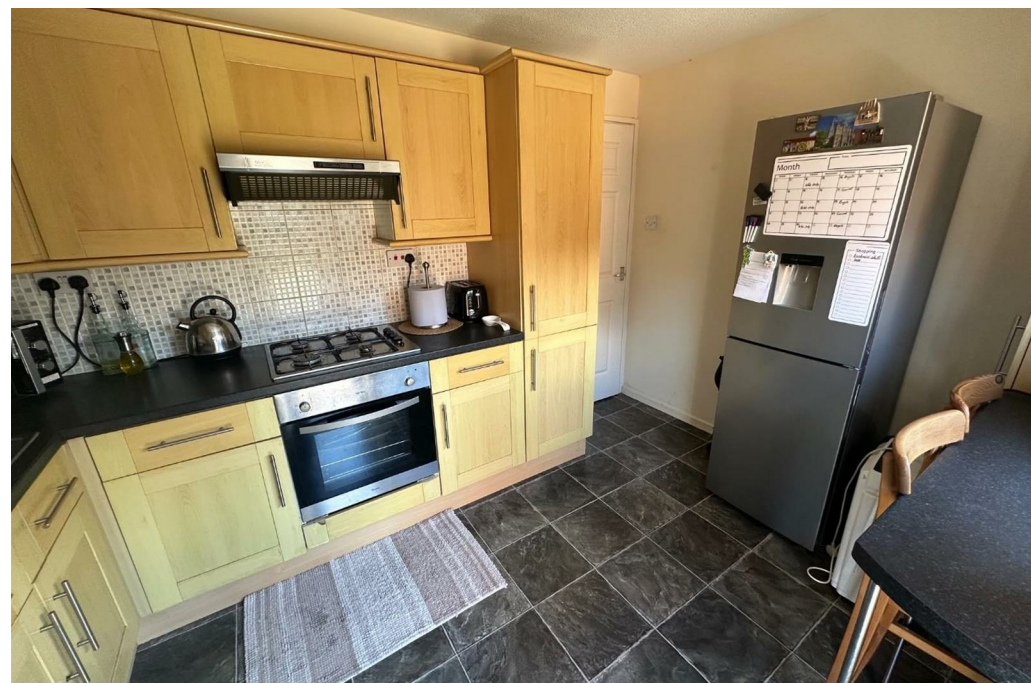
The accommodation comprises a spacious sitting room and a fitted kitchen, which includes a washing machine, fridge-freezer, and dishwasher. The first floor features two double bedrooms and a bathroom suite. Additionally, the property benefits from an enclosed, low-maintenance rear garden, a garage, and driveway parking for two cars.

EPC Rating - C

Council Tax Band - C

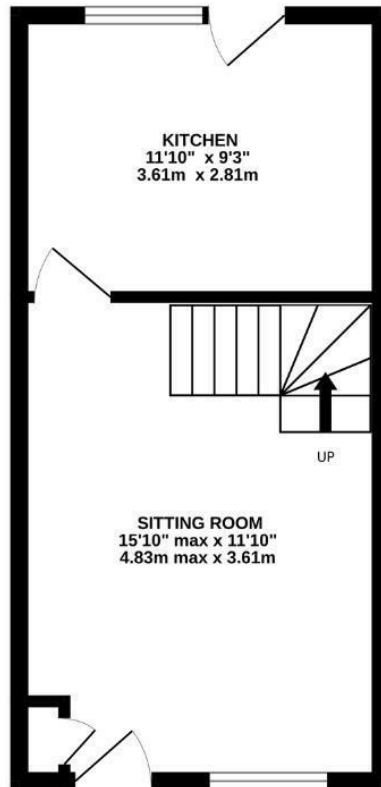
Heating Type - Gas Central Heating

Freehold

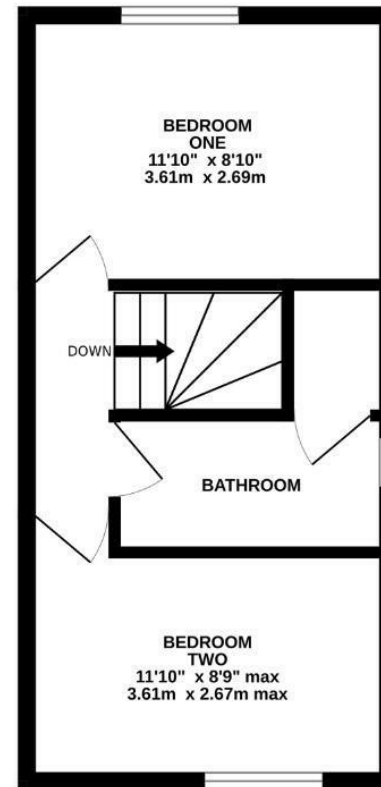




GROUND FLOOR
297 sq.ft. (27.6 sq.m.) approx.



1ST FLOOR
297 sq.ft. (27.6 sq.m.) approx.



TOTAL FLOOR AREA: 594 sq.ft. (55.2 sq.m.) approx.

Whilst every attempt has been made to ensure the accuracy of the floorplan contained here, measurements of doors, windows, rooms and any other items are approximate and no responsibility is taken for any error, omission or mis-statement. This plan is for illustrative purposes only and should be used as such by any prospective purchaser. The services, systems and appliances shown have not been tested and no guarantee as to their operability or efficiency can be given.
Made with Metropix ©2026