



Church Road, Hucking, Maidstone, Kent, ME17 1QT
Offers In Excess Of £1,000,000



**** GUIDE PRICE: £1,000,000 - £1,100,000 **** A stunning 16th-century Grade II Listed Wealden Hall House, situated in the semi-rural location of Hucking, nearby to the villages of Bearsted and Hollingbourne, on a generous plot of nearly half an acre and bordered by 700 acres of protected Woodland Trust land. The façade features a brick lower level with a cream and brown jettied first floor, and a Kent peg-tiled roof, with a fabulous historic oak front door.

A sweeping driveway leads to a generous gated parking area and a double garage. Step inside the entrance porch and take in the exquisite historical details and original beamed ceilings throughout. The grand sitting room features a fabulous inglenook fireplace with a log burner, a central beam, and herringbone parquet flooring extending across much of the ground floor. The property includes a family room with charming old beams and a utility/cloakroom leading to the gardens. The country-style kitchen/dining room has been beautifully updated with an Aga cooker and Shaker-style cabinets. There's also a cellar for wine storage.

Upstairs, the landing leads to four double bedrooms and one single, all with stunning exposed beams, plus two family bathrooms, including one with a stunning diagonal oak brace. The second floor contains a further double room with a vaulted ceiling, eaves storage, and an en-suite bathroom featuring a roll-top bath.

Outside, a separate pitched roof brick building with power supply is perfect for an office or studio, with a large accessible roof space above. The large rear lawn is surrounded by established trees, with a path to the lane, a bbq house, a greenhouse, and various fruit trees. Attractive seating areas provide ample space for entertaining family and friends. This is a stunning property that needs to be viewed to be truly appreciated. Tenure: Freehold. EPC Exempt. Council Tax Band: G.



LOCATION

The charming hamlet of Hucking lies on the North Downs between Maidstone and Sittingbourne, both of which offer an excellent range of amenities. The village is served by a historic church and a traditional pub. Just three miles away, the adjoining village of Hollingbourne provides a mainline railway station with direct links to London, along with easy access to the motorway network.

ACCOMMODATION

Cellar

Ground Floor:

Entrance Porch

Kitchen/Breakfast Room

Sitting Room

Inner Hall

Utility Room

Family Room

First Floor:

Landing

Principal Bedroom

Bedroom

Bedroom

Bedroom

Bedroom

Bathroom

Shower Room

Second Floor:

Bedroom

Bathroom

EXTERNALLY

Driveway

Garage

Workshop/Gym

BBQ House

Greenhouse/Storage

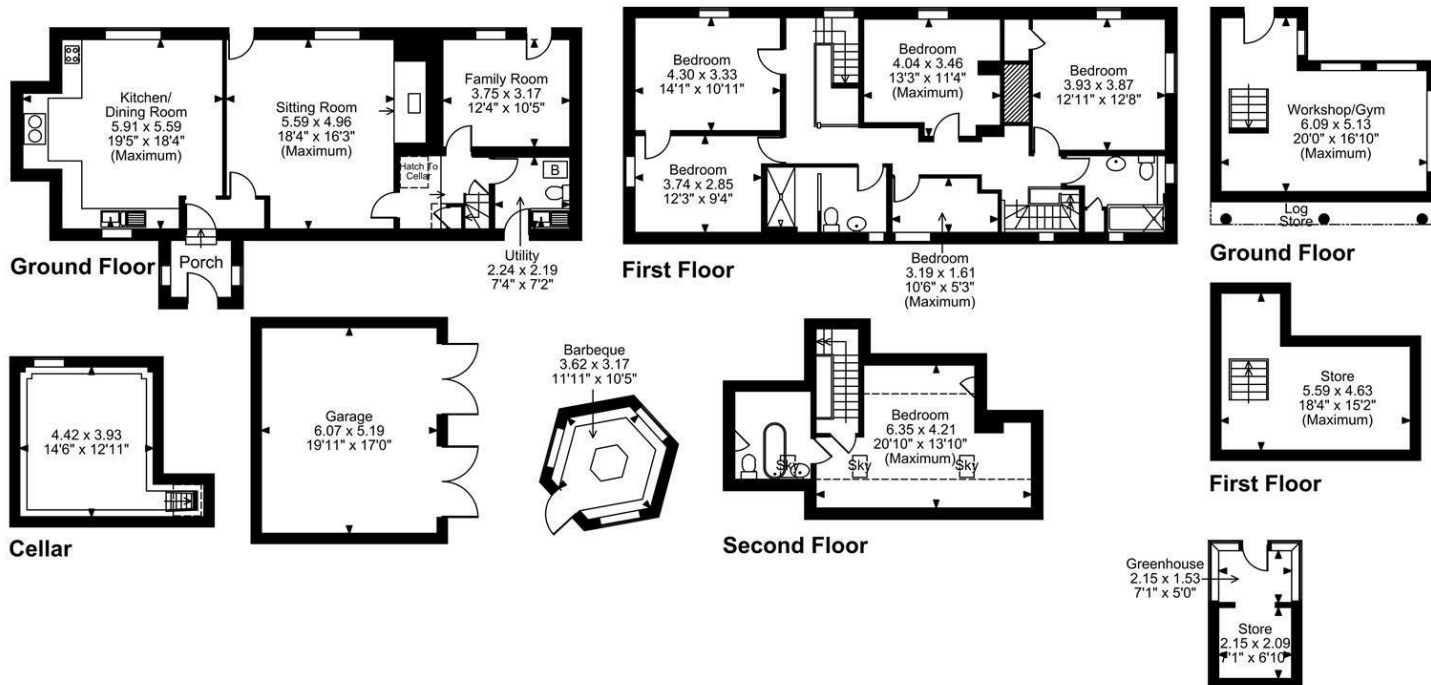
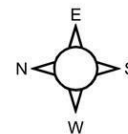
Gardens

VIEWING

Strictly by arrangement with the Agent's
Bearsted Office, 132 Ashford Road, Bearsted,
Maidstone, Kent ME14 4LX. Tel: 01622 739574.

Page & Wells limited for themselves and for the vendors of this property whose agents they are give notice that: 1. These particulars do not constitute any part of, an offer or a contract. 2. All statements contained in these particulars as to this property are made without responsibility on the part of Page & Wells Limited or the Vendor. 3. None of the statements contained in these particulars as to the property is to be relied on as statements or representations of fact. 4. Any intending purchaser must satisfy himself by inspection or otherwise as to the correctness of each of the statements contained in these particulars. 5. The vendor does not make or give, and neither Page & Wells Limited nor any person in their employment has any authority to make or give any representation whatsoever in relation to this property. These particulars are supplied on the understanding that all negotiations are carried out throughout Page & Wells Limited. Properties with a reference prefixes EAA are those which Page & Wells Limited disclose an interest in accordance with the provisions of the Estates Agents Act 1979

Hucking Court, Church Road, Hucking, Maidstone
Approximate Gross Internal Area
Main House = 2420 Sq Ft/225 Sq M
Garage = 339 Sq Ft/32 Sq M
Outbuilding = 649 Sq Ft/60 Sq M
Total = 3408 Sq Ft/317 Sq M



FOR ILLUSTRATIVE PURPOSES ONLY - NOT TO SCALE
 The position & size of doors, windows, appliances and other features are approximate only.

□ □ □ □ Denotes restricted head height
 © ehouse. Unauthorised reproduction prohibited. Drawing ref. dig/8650639/SS

