



Redmayne Arnold & Harris
estate agents, letting agents & surveyors

rah.co.uk



TO LET



Flat 1, Editha House Queen Ediths Way, Cambridge, CB1 8PJ

£2,000 PCM

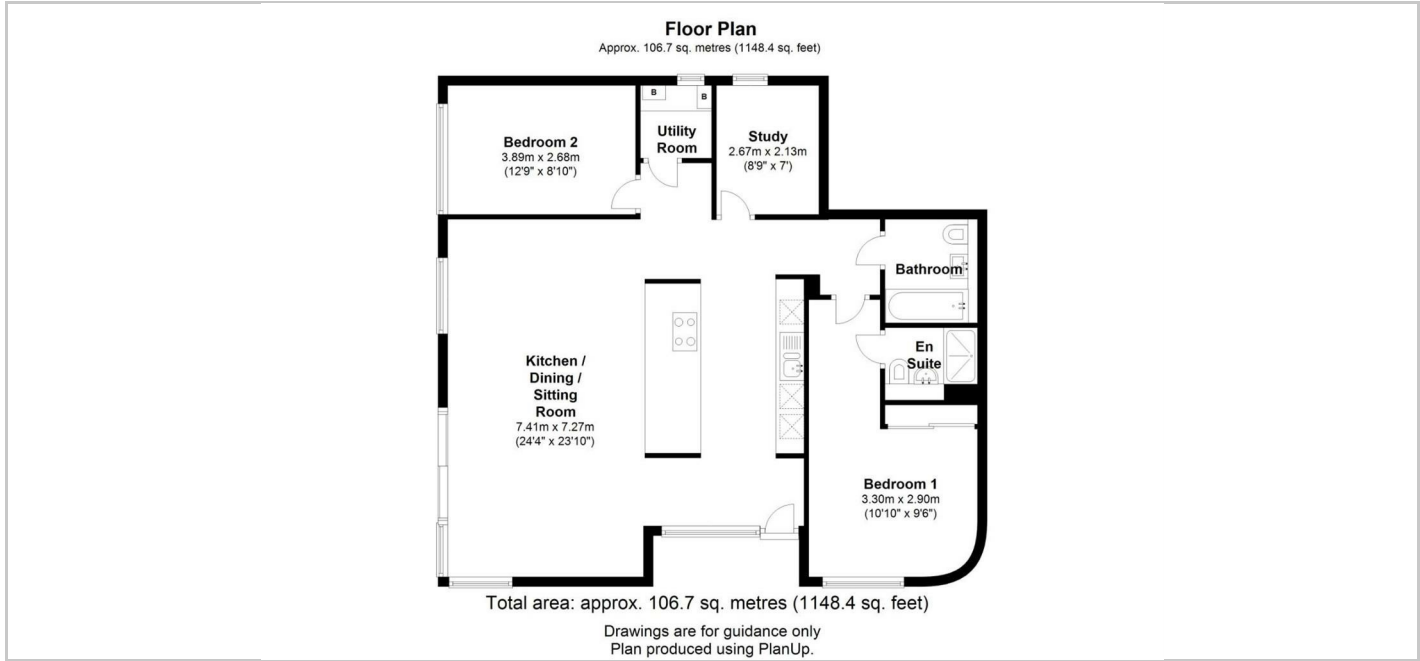


THE PROPERTY

A three bedroom, ground floor apartment providing light, spacious and contemporary accommodation just moments away from Addenbrooke's Hospital, and less than 1.5 miles away from the City Centre. The property comprises open plan kitchen/dining/sitting room, utility room, two bedrooms- one with en-suite, study and a family bathroom. There is an allocated parking space.

The property will be managed by RAH.

- EPC Rating: B
- Council Tax band: F
- Deposit £2300
- Holding Deposit: £390
- Minimum tenancy length 12 months



SITUATION

Directions

