



Flat (EPC Rating:)

13A WESTCLIFFE DRIVE, BLACKPOOL,
LANCASHIRE, FY3 7BJ

PCM

£450 PCM



2 Bedroom Flat located in Lancashire

Welcome to Westcliffe Drive...

This first floor accommodation is conveniently located overlooking the centre of Layton with links to public transport links literally on your doorstep.

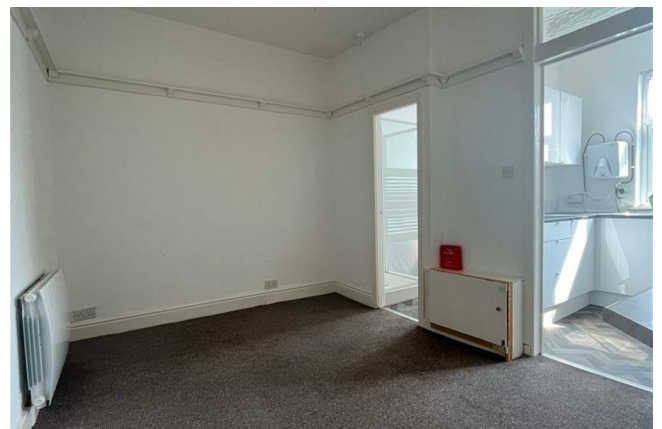
There is ground floor, private access to this fully self-contained flat with stairs up to the first floor accommodation which briefly comprises of: entrance hall, living room, newly fit kitchen, shower room & 2 bedrooms.

The flat is available immediately and a long term tenancy would be preferred.

Please note that access to this unfurnished home is gained from the rear of Westcliffe Drive so please decide whether this is for you before you view and/or apply for the property. There is no parking available.

Rent: £450.00pcm. Deposit: £515.00 Holding Deposit: £103.00

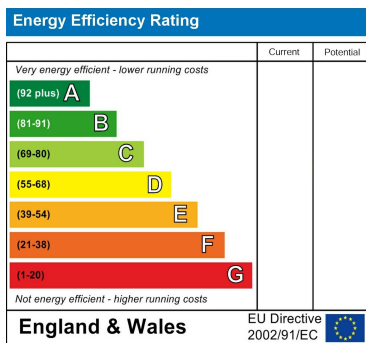
All applicants will need a working, homeowner guarantor to support your application. All tenants and guarantors are to meet the affordability criteria. This is calculated per property depending on the rent amount. Please ask for details.



Council Tax Band

A

Energy Performance Graph



Call us on

01253 886444

hello@lsblackpool.com

lsblackpool.com

Agents Note: Whilst every care has been taken to prepare these particulars, they are for guidance purposes only. All measurements are approximate and are for general guidance purposes only and whilst every care has been taken to ensure their accuracy, they should not be relied upon and potential buyers are advised to recheck the measurements.