



Twickenham Road, TW13

£2,350 Per calendar month

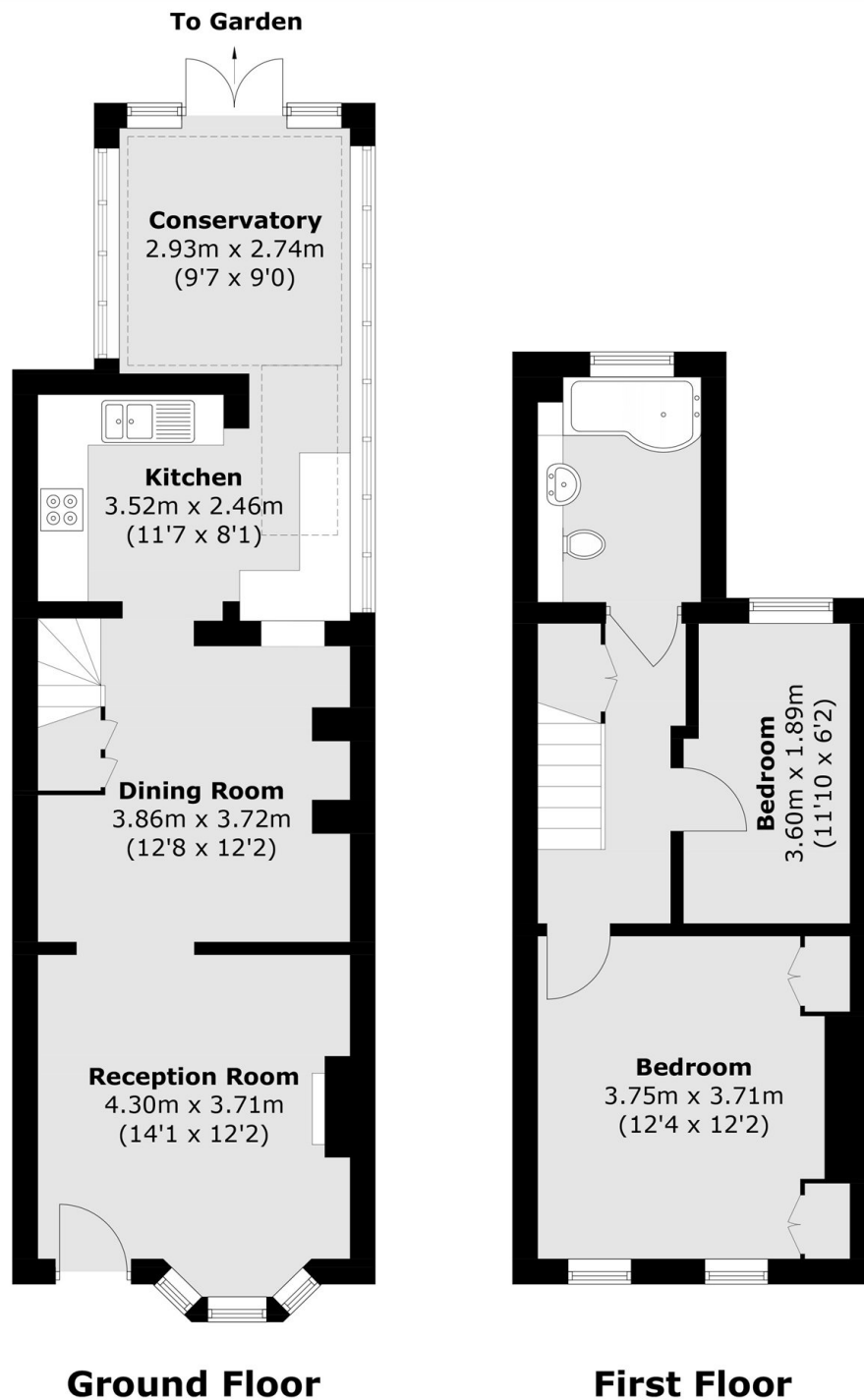
Available to rent is this spacious two bedroom Victorian terraced house that benefits from having two receptions and a sunny private garden.

Glebe Cottages is a row of houses on Twickenham Road which leads up to West Twickenham and offers convenient bus access into the town centre where you will find a vast array of shops, pubs and restaurants. There are a number of excellent schools nearby as well as being a stones throw away from David Lloyd health club.

Features

- Two Bedrooms
- Two Receptions
- Private Garden
- Rear Access
- Victorian

Twickenham Road, Twickenham, TW13



Total area (approx.): 81.4 sq. m (876.1 sq. ft)

Dexters

Twickenham
84 Heath Road
Twickenham
TW14BW

Lettings
020 8744 2233

Energy Rating: D. We aim to make our particulars both accurate and reliable. However they are not guaranteed; nor do they form part of an offer or contract. If you require clarification on any points then please contact us, especially if you're traveling some distance to view. Please note that appliances and heating systems have not been tested and therefore no warranties can be given as to their good working order.

 **RICS** | Regulated
Estate Agent
and Letting Agent

dexters.co.uk