

# Apartment 4, £189,975\*

RICHMOND  
VILLAGES

Part of Bupa

(Other charges apply)  
(50% shared ownership)



1



1



EPC - C



## 1 bedroom ground floor apartment

A spacious, one bedroom, ground floor assisted living apartment, with large patio windows leading to a patio overlooking the woodland gardens. The apartment offers access to communal facilities including reception, the restaurant, bar & coffee area, library, wellness spa, and numerous terraces

### Specification

- A bright living room has views across the woodland.
- The well-equipped fitted kitchenette has base units, stainless steel sink and drainer, work surface, microwave and fridge freezer.
- The bedroom is a generously sized.
- A beautifully tiled shower room has a WC and wash hand basin set within a fully fitted vanity unit and under sink storage downlights to ceiling.
- TV and satellite points\*.
- Well stocked flower borders and lawns maintained by the Village Gardeners.
- Allocated parking space for one car.



\*Satellite subscription not included.

Important Notice: These particulars are intended to give a fair and substantially correct overall description. **Other fees and charges apply**, please contact the Village Advisers for further details. Properties are sold on a 125 year lease and this property has 125 years remaining. Generic images are shown and are not representative of the property for sale.

01242 474 333

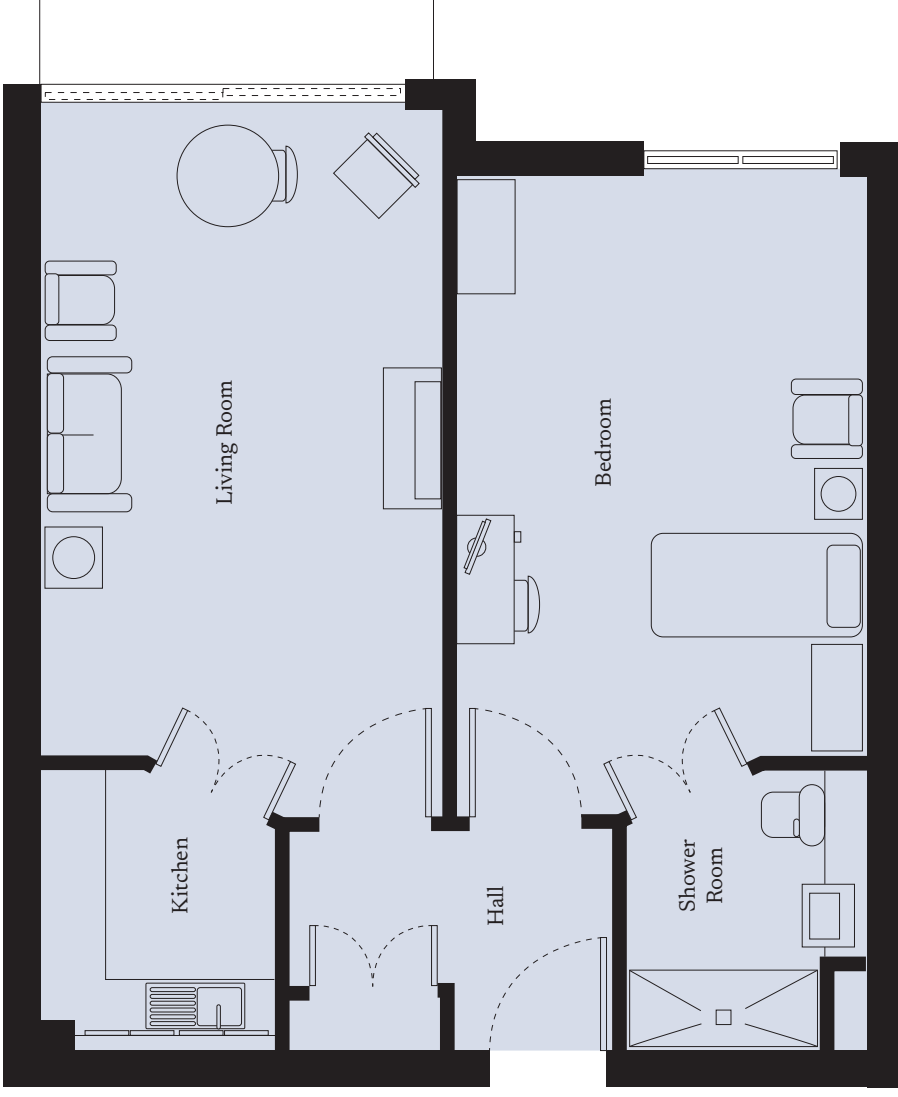
cheltenham@richmond-villages.com

Richmond Villages Cheltenham,  
Hatherley Lane, Cheltenham, Gloucestershire GL51 6PN

# Apartment 4

Ground floor | 58.87m<sup>2</sup> – 634ft<sup>2</sup>

- Kitchenette**  
2500mm x 2120mm  
8'2" x 6'11"
- Living Room**  
6240mm x 3620mm  
20'5" x 11'10"
- Bedroom**  
5080mm x 3630mm  
17'8" x 11'11"
- Shower Room**  
2500mm x 2120mm  
8'2" x 6'11"
- Patio Area**  
3500mm x 2500mm  
11'5" x 8'2"



These particulars are intended to give a fair and substantially correct overall description.

Measurements have been taken at 1500mm ceiling height.

All dimensions are approximate. Bedroom measurements include the wardrobe if applicable. Room measurements include bay windows if applicable.

Furniture layout is to give an indicative impression. Although all efforts have been made to ensure its accuracy at time of print dimensions, fixtures, fittings, finishes and specifications are subject to change without notice.

The properties are sold unfurnished.

