



Not for marketing purposes INTERNAL USE ONLY

Monmouth Gardens  
PLYMOUTH

# Monmouth Gardens PLYMOUTH PL5 4DB

for sale offers in excess of  
**£130,000**



## Property Description

A well-presented and deceptively spacious one-bedroom ground floor flat, ideal for first-time buyers, downsizers or investors, offering a comfortable layout and the benefit of private outdoor space.

The accommodation comprises a welcoming lounge, bright and generously sized, featuring a stylish fireplace and ample room for both seating and entertaining. The modern fitted kitchen is well-equipped with a range of wall and base units, integrated appliances, and good worktop space, with a window providing natural light and views over the garden.

The property benefits from a good-sized double bedroom, neutrally decorated and offering built-in wardrobe storage, creating a calm and practical sleeping space. The contemporary shower room is fitted with a glass enclosure, modern fixtures and tiling, providing a clean and functional finish.

Externally, the property enjoys private, enclosed front and rear garden, rear garden, mainly laid to lawn with established planting and a pathway, offering excellent potential for landscaping and outdoor seating.

Additional benefits include double glazing and a convenient ground floor position, with easy access to local amenities, transport links and surrounding areas.

This is a fantastic opportunity to acquire a well-maintained home with both indoor comfort and outdoor space.

## Front Of Property

The front door sits slightly recessed beneath the porch canopy.

A gravelled front area provides a low-maintenance garden space.

The entrance is accessed via a side pathway running along the right-hand side of the property. Enclosed front garden.

## Lounge

13' 2" x 12' 7" ( 4.01m x 3.84m )

Double glazing window to the front elevation, The fireplace is framed by a painted surround in a soft grey tone, giving it a clean, modern appearance.

The surround has simple, squared edges with a substantial mantel shelf on top.

Inside the surround is a dark inset panel (charcoal/stone effect) with subtle diagonal veining.

## Kitchen

10' 3" x 8' ( 3.12m x 2.44m )

A range of matching wall and base units with worktops above. A four-burner gas hob sits on the worktop, below is a built-in oven with stainless steel trim, above the hob is a stainless steel extractor hood. Behind the hob is a mosaic tile backsplash in shades of grey, black, and metallic tones. A stainless steel sink with drainer is positioned beneath the window. Double glazing window to the rear elevation. Plumbing for washing machine. White radiator.

## Bedroom

10' 6" x 10' 3" ( 3.20m x 3.12m )

Double glazing window to the rear elevation. White radiator. On the right side of the image is a built-in wardrobe with a cream-coloured

panel door  
, an adjacent full-height mirrored sliding door.

## Shower Room

6' 11" x 5' 10" ( 2.11m x 1.78m )

Obscured double glazing window to the side elevation. Corner shower enclosure with glass doors. A white shower tray at the base

inside the shower. A wall-mounted handheld shower head attached to a vertical rail.

A chrome mixer control positioned at mid-height for temperature adjustment. A chrome heated towel rail is mounted on the wall. A compact, wall-mounted white sink sits beneath the window.

## Rear Garden

Enclosed rear garden, fully enclosed with fencing on all sides.

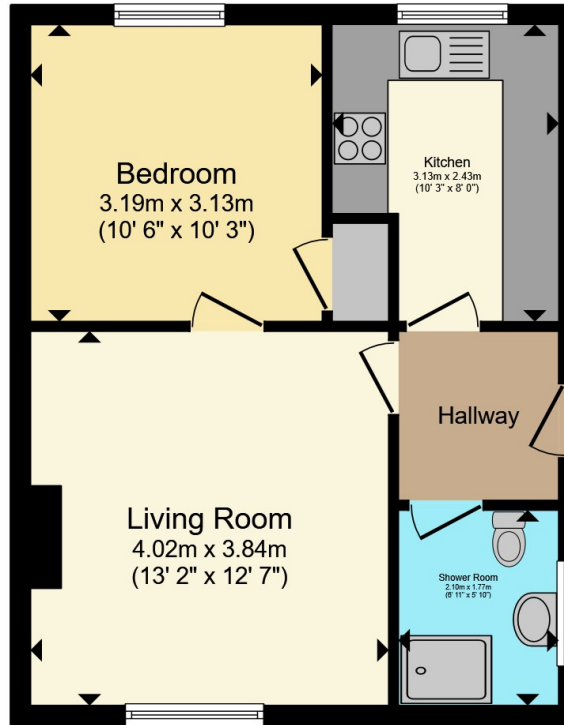
A narrow concrete path runs from the foreground toward the back-right corner, dividing the lawn.

The space is flat and functional, suitable for everyday use.









Total floor area 41.4 m<sup>2</sup> (445 sq.ft.) approx

This floor plan is for illustrative purposes only. It is not drawn to scale. Any measurements, floor areas (including any total floor area), openings and orientation are approximate. No details are guaranteed, they cannot be relied upon for any purpose and they do not form part of any agreement. No liability is taken for any error, omission or misstatement. A party must rely upon its own inspection(s). Powered by [www.propertybox.io](http://www.propertybox.io)



To view this property please contact Connells on

**T 01752 351616**  
**E [stbudeau@connells.co.uk](mailto:stbudeau@connells.co.uk)**

15 Victoria Road St Budeaux  
 PLYMOUTH PL5 1RW

EPC Rating:  
 Awaited

Council Tax  
 Band: A

Service Charge: Ask  
 Agent

Ground Rent:  
 10.00

Tenure: Leasehold

**check out more properties at [connells.co.uk](http://connells.co.uk)**

This is a Leasehold property. We are awaiting further details about the Term of the lease. For further information please contact the branch. Please note additional fees could be incurred for items such as Leasehold packs.



1. MONEY LAUNDERING REGULATIONS Intending purchasers will be asked to produce identification documentation at a later stage and we would ask for your co-operation in order that there will be no delay in agreeing the sale. 2. These particulars do not constitute part or all of an offer or contract. 3. The measurements indicated are supplied for guidance only and as such must be considered incorrect. Potential buyers are advised to recheck measurements before committing to any expense. 4. We have not tested any apparatus, equipment, fixtures, fittings or services and it is in the buyers interest to check the working condition of any appliances.

Connells Residential is registered in England and Wales under company number 1489613, Registered Office is Cumbria House, 16-20 Hockliffe Street, Leighton Buzzard, Bedfordshire, LU7 1GN. VAT Registration Number is 500 2481 05.

**See all our properties at [www.connells.co.uk](http://www.connells.co.uk) | [www.rightmove.co.uk](http://www.rightmove.co.uk) | [www.zoopla.co.uk](http://www.zoopla.co.uk)**

Property Ref: SBU109798 - 0005