

Property ref: 177583

## Carraway Street, Reading, RG1 3GB

**£2,600 PCM**

**HASLAM'S**  
Lettings



A modern 3 bedroom town house located in Reading town centre superbly built by Berkeley Homes. This property benefits from three double bedrooms, large private terrace, allocated parking, 2 bathrooms and a further WC.

Reading Borough Council tax band E.

Water supply: Mains

Drainage info: Mains

Electricity supply: Mains

Broadband/Mobile Info: Connections available. For an indication of specific speeds and supply of Broadband and Mobile, we advise applicants go to the Ofcom website Broadband and Mobile Coverage Checker.

- Three double bedrooms; Master with en-suite
- Family bathroom with shower over bath
- Private terrace; Allocated parking
- £95pcm on top of the rent to cover hot water and heating via communal boiler
- Unfurnished; EPC rating B
- Managed by HASLAM'S

### Available Now

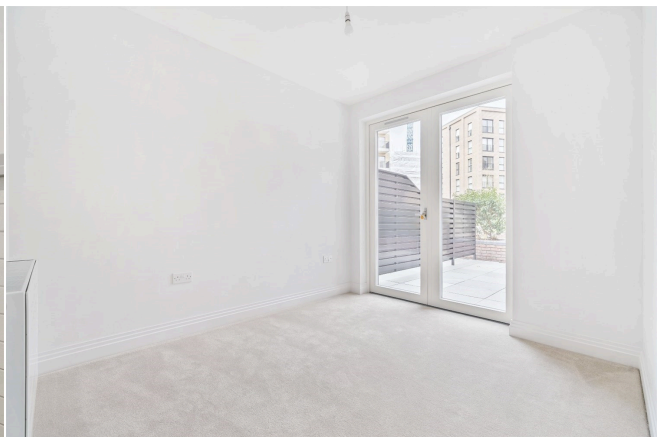
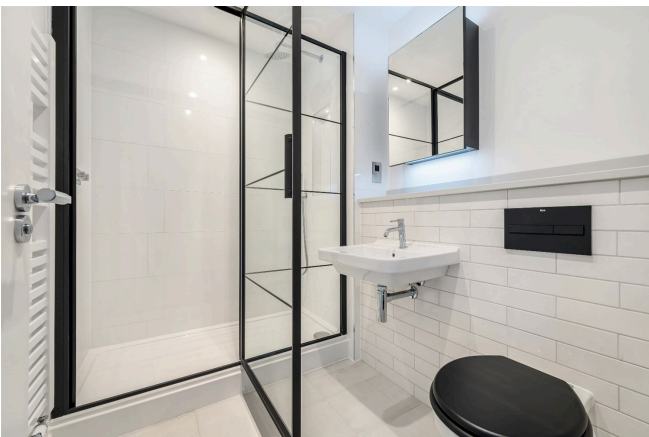
\*Fees For Assured Shorthold Tenancies: when you rent a property from us you will be required to pay a sum equivalent to one weeks' rent for a holding deposit. Upon successful application, this amount will be off set against your first months' rent. You will also be required to pay a security deposit equivalent to 5 weeks' rent which will be held and protected in line with Deposit legislation. For more information about our fees please visit: [www.haslams.net](http://www.haslams.net)  
Fees for all other tenancies (Non Housing Act Tenancies / Company Lets): when you rent a property from us we will charge you a one-off fee per property. This charge is the equivalent of 15 days of the monthly rental charge (+VAT) with a minimum fee of £450 (inc.VAT) up to a maximum of £650 (inc.VAT). Other fees may apply depending on your circumstances.

**0118 960 1055**

**[lettings@haslams.net](mailto:lettings@haslams.net) [www.haslams.net](http://www.haslams.net)**

**Haslams Estate Agents Ltd, 159 Friar Street, Reading, Berkshire, RG1 1HE**



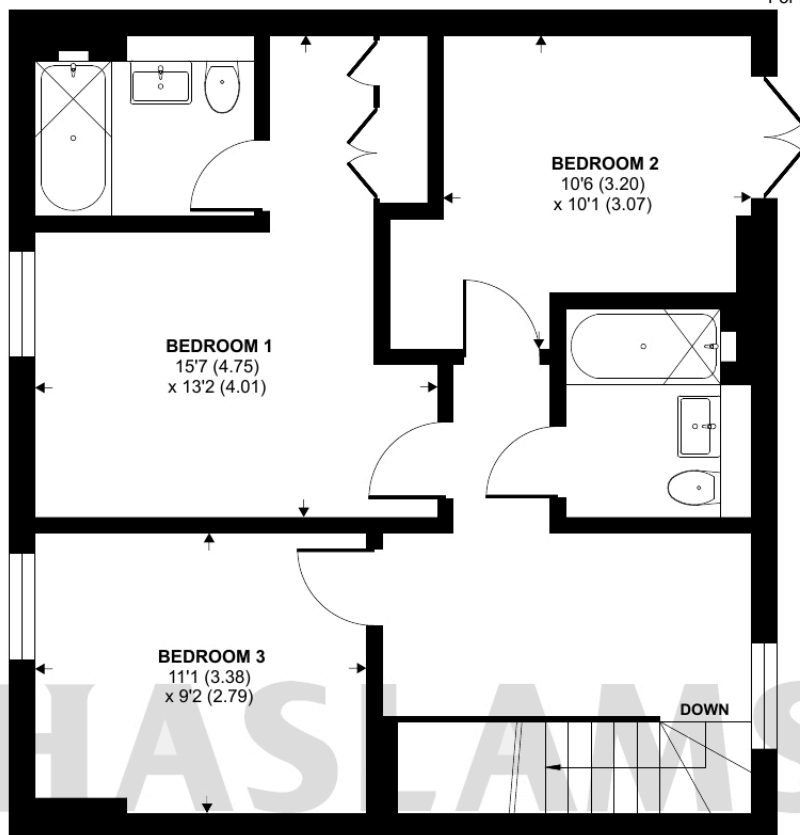




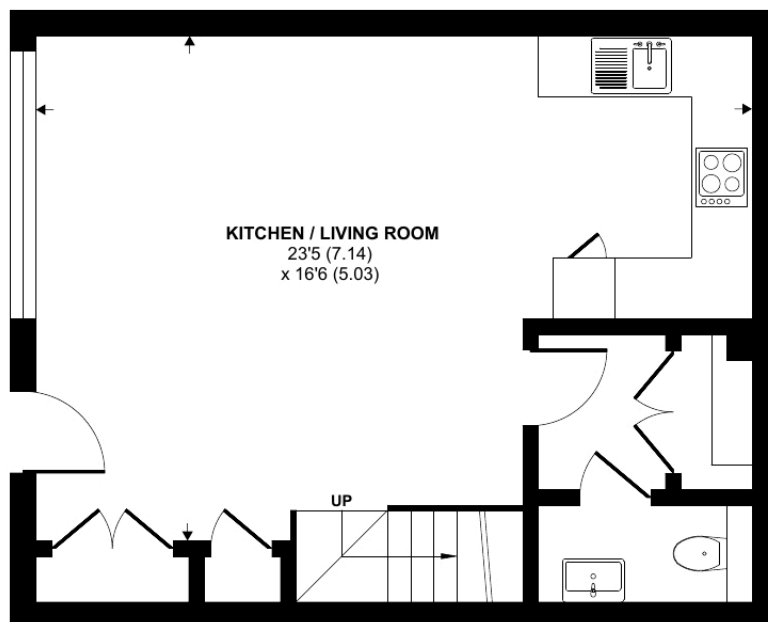
## Carraway Street, Reading, RG1

Approximate Area = 1036 sq ft / 96.2 sq m

For identification only - Not to scale



FIRST FLOOR



GROUND FLOOR



Certified  
Property  
Measurer

Floor plan produced in accordance with RICS Property Measurement Standards incorporating International Property Measurement Standards (IPMS2 Residential). © n1cheom 2023.  
Produced for Haslamss. REF: 1035597