



Jordan fishwick

MANCHESTER
214 Palatine Road



214 Palatine Road, Manchester, M20 2UF

Offers Over £200,000



The Property

A spacious two double bedroom apartment, situated on the top floor with a south westerly facing balcony. In outline the property includes a wide private entrance hall with storage space, a lovely and naturally bright living room with a balcony off, separate kitchen with integrated white goods, two large double bedrooms with the master having fitted wardrobes the full length of the room, fitted bathroom, The development itself has secure gated parking for residents and is in a great location within easy reach of West Didsbury, Didsbury and Northenden Villages. The property also benefits from gas central heating, double glazed windows throughout and can be accessed from either the garden or car park entrances, where the gated and secure parking is. *NO ONWARD CHAIN*

Directions

M20 2UF



- Two double bedrooms
- Top floor apartment
- South-westerly facing balcony
- Large living room
- Separate fitted kitchen
- Gated residents parking

Postcode - M20 2UF

EPC Rating - D

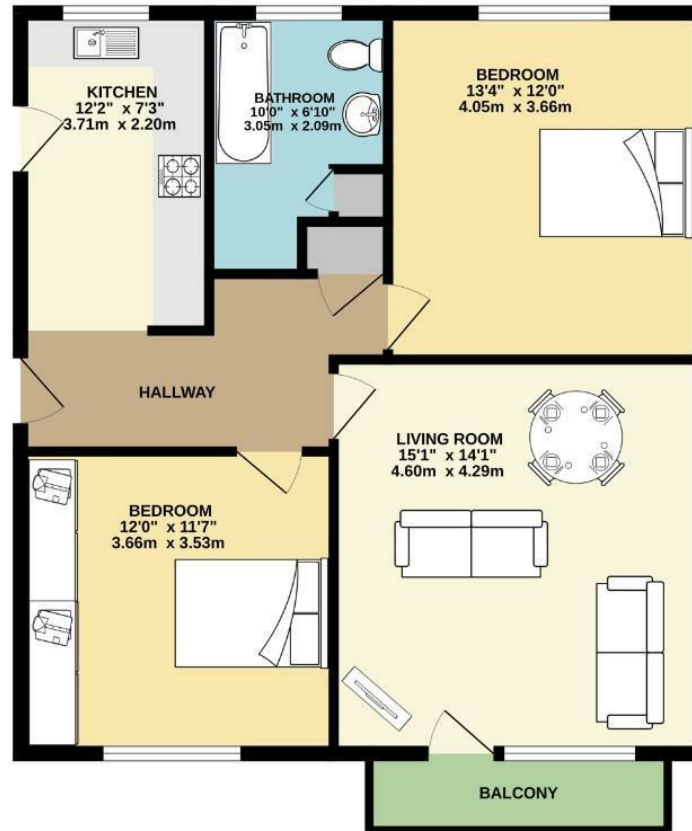
Floor Area - 740.00 sq ft

Local Authority - Manchester City Council

Council Tax - B



SECOND FLOOR
741 sq.ft. (68.8 sq.m.) approx.



TOTAL FLOOR AREA: 741 sq.ft. (68.8 sq.m.) approx.
Measurements are approximate. Not to scale. Illustrative purposes only.
Made with Houspax ©2025



These particulars are believed to be accurate but they are not guaranteed and do not form a contract. Neither Jordan Fishwick nor the vendor or lessor accept any responsibility in respect of these particulars, which are not intended to be statements or representations of fact and any intending purchaser or lessee must satisfy himself by inspection or otherwise as to the correctness of each of the statements contained in these particulars. Any floorplans on this brochure are for illustrative purposes only and are not necessarily to scale.

Offices also at: Wilmslow, Macclesfield, Hale, Sale, Chorlton, Glossop, Manchester & Salford

757-759 Wilmslow Road, Didsbury Village, Manchester

0161 445 4480

didsbury@jordanfishwick.co.uk
www.jordanfishwick.co.uk