

## Rosary Gardens, SW7

£1,000,000

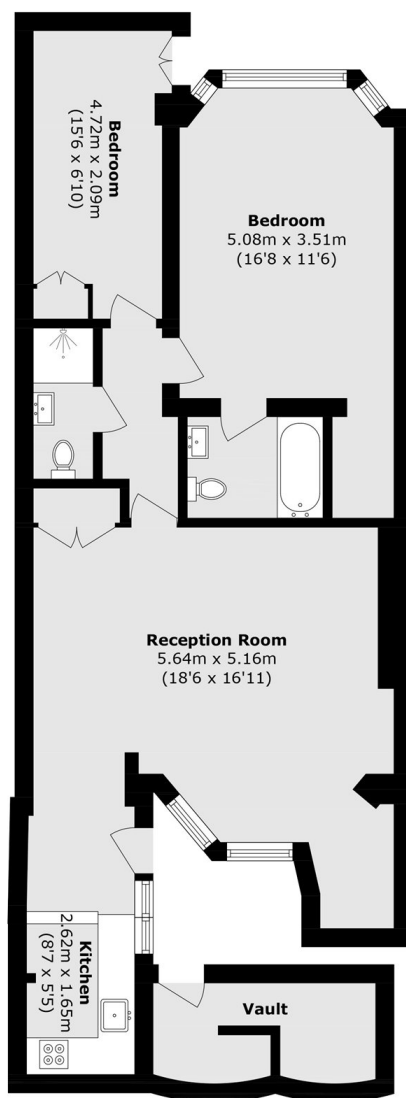
A spacious two-bedroom apartment situated in the heart of SW7, offering a generous open-plan living and dining area that is ideal for entertaining. The property is conveniently located close to South Kensington and Gloucester Road stations, providing excellent transport links across London and beyond.

Rosary Gardens is tucked away just off the Old Brompton road, the apartment enjoys immediate access to some of London's most desirable amenities, as well as excellent transport connections and the green open spaces of Hyde Park and Kensington Gardens.

### Features

- No Ongoing Chain
- Close To Two Mainline Stations
- Access To Private Patio
- Share Of Freehold
- Close To Amenities
- Highly Sought After Location

# Rosary Gardens, London, SW7



## Lower Ground Floor

Total area (approx.): 81.7 sq. m (879.4 sq. ft)

Vault area (approx.): 8.6 sq. m (92.6 sq. ft)