

HUNT FRAME

ESTATE AGENTS



151 Seaside, Eastbourne, BN22 7NW

£675 Per Month

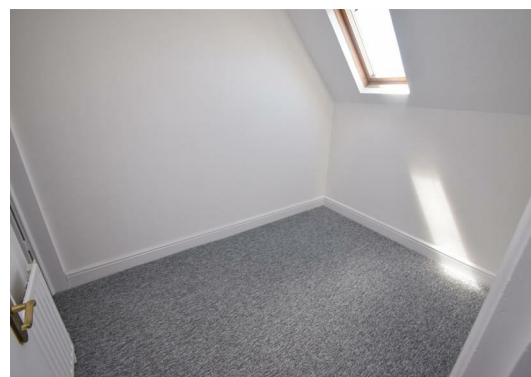


PLEASE CLICK EITHER 'CONTACT AGENT' OR 'FURTHER DETAILS' TO APPLY.

A compact one bedroom flat available to rent within the Seaside area of Eastbourne, close to local shops and bus routes. Situated on the second floor of this converted building and comprising lounge and NEWLY INSTALLED open plan kitchen, bedroom and en-suite shower room. Newly decorated and carpeted throughout. AVAILABLE NOW. **ZERO DEPOSIT OPTION AVAILABLE**

PLEASE NOTE THERE IS NO FACILITY FOR A WASHING MACHINE IN THE PROPERTY AND IT IS A SINGLE BEDROOM AND THEREFORE NOT SUITABLE FOR MORE THAN ONE PERSON.

HOLDING DEPOSIT: £155.76
SECURITY DEPOSIT: £778.85
COUNCIL TAX BAND: A



Communal front door with security entry phone to:

Communal entrance hall

Stairs to second floor, front door to:

Lounge

9 x 7'8 (2.74m x 2.34m)

Radiator, eaves storage cupboard, security entry phone, open plan to:

Kitchen

10'3 x 6'7 (3.12m x 2.01m)

Fitted in a range of wall and base mounted cupboards and drawers. Work tops with inset stainless steel sink and single drainer unit with mixer tap. Built in oven, hob and extractor. Fridge, cupboard housing gas fired boiler, double glazed window to rear.

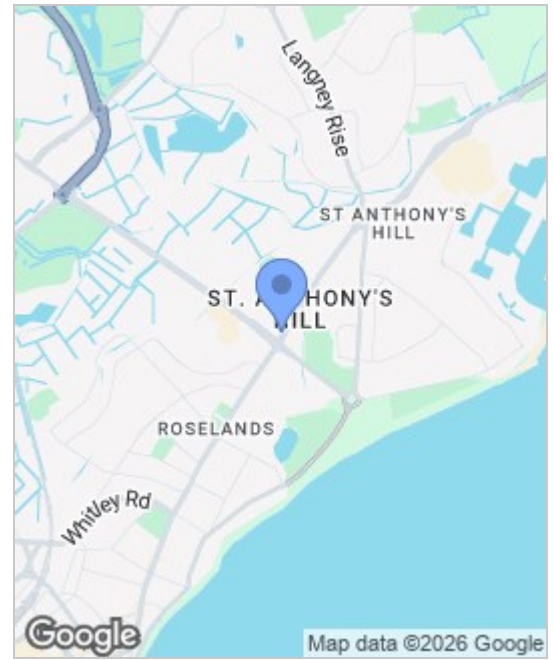
Bedroom

8'11 x 6'5 (2.72m x 1.96m)

Skylight window, radiator, door to:

Shower Room

Suite comprising shower cubicle, low level wc, pedestal wash basin..



Energy Efficiency Rating		Environmental Impact (CO ₂) Rating			
	Current	Potential		Current	Potential
Very energy efficient - lower running costs			Very environmentally friendly - lower CO ₂ emissions		
(92 plus) A			(92 plus) A		
(81-91) B			(81-91) B		
(69-80) C			(69-80) C		
(55-68) D			(55-68) D		
(39-54) E			(39-54) E		
(21-38) F			(21-38) F		
(1-20) G			(1-20) G		
Not energy efficient - higher running costs			Not environmentally friendly - higher CO ₂ emissions		
England & Wales	EU Directive 2002/91/EC		England & Wales	EU Directive 2002/91/EC	

Energy Efficiency Rating: Current 64, Potential 71

These particulars, whilst believed to be accurate are set out as a general outline only for guidance and do not constitute any part of an offer or contract. Intending purchasers should not rely on them as statements of representation of fact, but must satisfy themselves by inspection or otherwise as to their accuracy. No person in this firm's employment has the authority to make or give any representation or warranty in respect of the property.