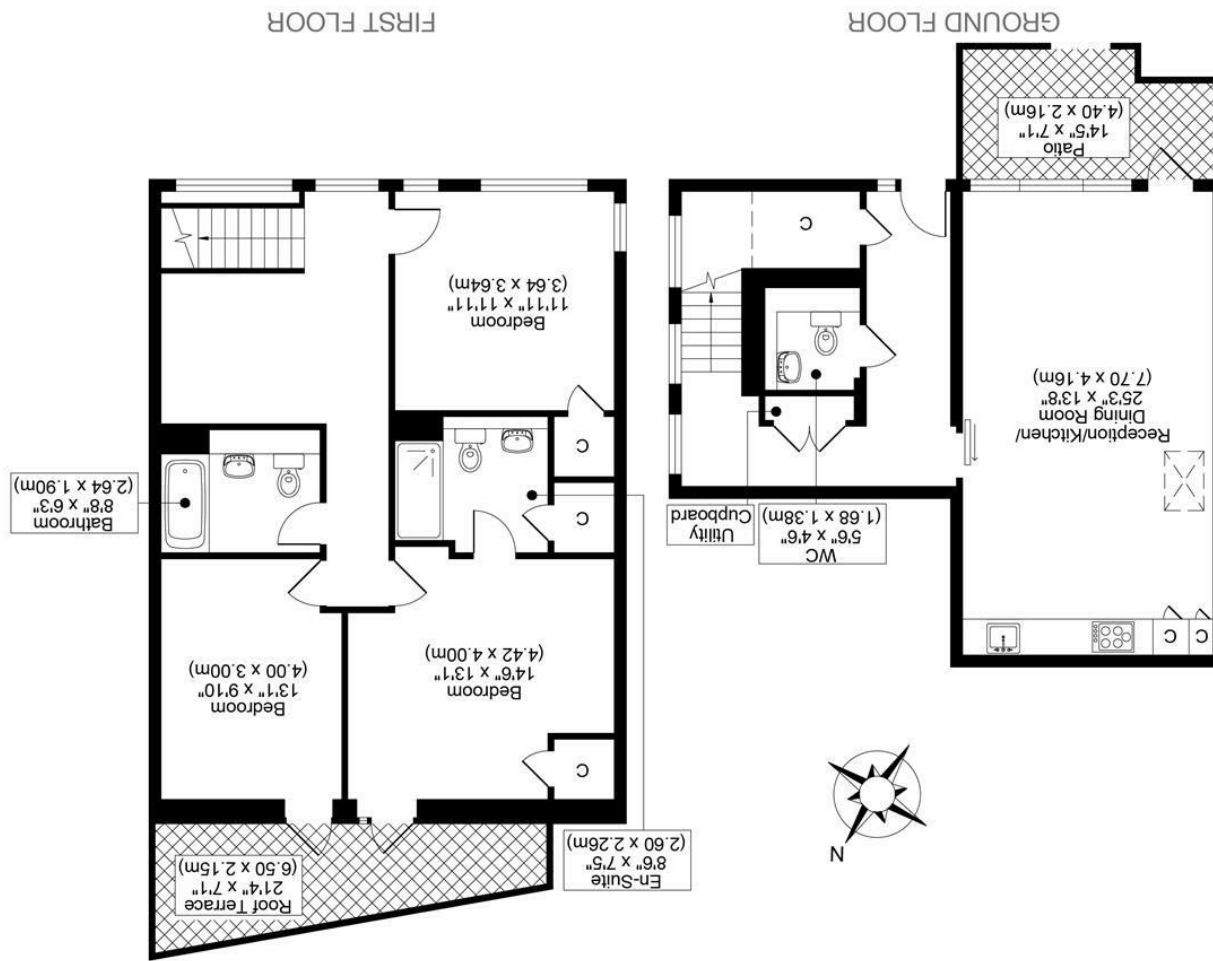




All measurements, walls, doors, windows, fittings and their appliances, their size and locations are shown conventionally and are approximate only and cannot be regarded as being a representation either by the seller or his agent.



HIGH STREET, EWELL KT17
 TOTAL APPROX FLOOR PLAN AREA 1409 SQ.FT (131 SQ.M)

SILVERMAN
BLACK
 PROPERTY SPECIALISTS





High Street Epsom, KT17 1SJ

Offers Over £700,000

Silverman Black is delighted to offer "The Works" - a brand newly reconfigured and refurbished Architect designed, semi-detached house, located on a small private development right in the heart of Ewell Village. "A house with a history" - The Works was formerly the site of an engineering firm who built the gearbox for Sir Malcolm Campbell's historic "Blue Bird" car, which set multiple "land speed" records from 1933 to 1935 and was the first car to travel at more than 300 mph! Today though, The Works is a sumptuous family home - completely redesigned and re-equipped to provide a stunning open plan living room which features a top-of-the-range luxury kitchen and folding doors out onto a south facing terrace garden, with cloak and utility rooms on the ground floor. Upstairs there is a bright and spacious master bedroom with an en-suite bathroom, walk-in wardrobe and access to a private roof terrace, plus two further enormous double bedrooms, a genuinely spacious work area/home office and a further family bathroom. Externally the property benefits from a private parking space with EV charging and the patio garden. Finished to very high standards, the property is ready for immediate occupation. A "brand new" but at the same time a "historic" home, this is one property you won't want to miss!

In terms of local facilities, the shops, bars and restaurants of Ewell Village are less than 50 meters away, with Bourne Hall and Ewell Castle School both being less than 5 minutes walk away. Fuller shopping & recreational facilities are available in Epsom (about 2 miles away), whilst the world-famous racecourse is about 3 miles distant. There are two local BR stations at East Ewell and West Ewell giving access to London Bridge and London Victoria in about 40 minutes, whilst Junction 8 of the M25 is approximately 5 miles away. Heathrow and Gatwick Airports can both be accessed with 35 - 40 minutes on a "good run".

Viewing highly recommended



- A "Home with a History" - a completely reconfigured and refurbished, Architect designed, three bedroom semi detached home located right in the heart of Ewell Village
- Formerly the site of an engineering firm who built the gearbox for Sir Malcolm Campbell's record-breaking Blue Bird car in the 1930's
- Accommodation comprises a stunning open plan living room with a luxurious kitchen suite, cloak & utility rooms, a master bedroom suite with walk-in wardrobe, bathroom and private roof terrace, two further double bedrooms, a home office & family bathroom
- Patio garden and private parking (with EV charging)
- Exceptionally high quality finish to all aspects of the home - giving the house real "wow factor"
- Centrally located only 50 meters from Ewell Village and a "stone's throw" from Bourner Hall and Ewell Castle School
- Access to both East Ewell & West Ewell BR stations - and thereby London in around 40 minutes
- Epsom town centre is 2 miles distant, Epsom Racecourse is 3 miles away, with the M25 just 5 miles distant
- Heathrow and Gatwick Airports both about 40 minutes away
- Viewing Highly recommended

