



## Mountfield Road, N3

£1,800 Per week

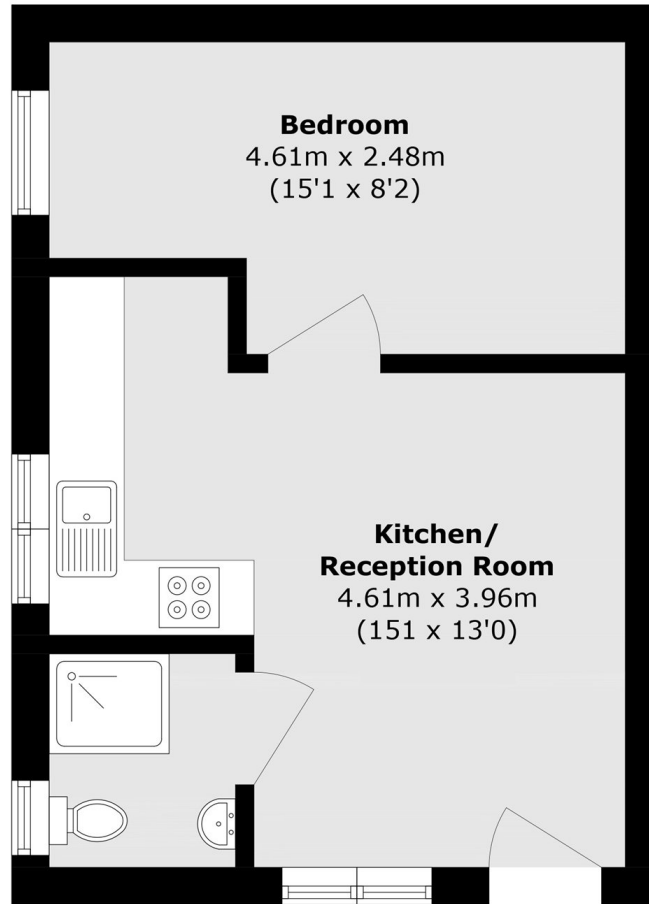
INCLUSIVE OF GAS AND WATER BILLS - A well-presented one bedroom ground floor flat offering a bright and practical layout throughout. The property features a spacious open plan kitchen and reception room, a generous double bedroom, and a modern bathroom. Further benefits include a private side garden, one allocated parking space, and gas and water bills included within the rent, making it an excellent low-maintenance option.

Mountfield Road is ideally located in Finchley Central, offering easy access to a range of local shops, cafes and everyday amenities. Finchley Central Underground station (Northern Line) is within close proximity, providing direct routes into Central London, while nearby green spaces and road links make it a convenient and well-connected place to live.

### Features

- 1 Bedroom
- 1 Reception
- 1 Bathroom
- Own Entrance
- Garden
- Parking

# Mountfield Road, London, N3



## Ground Floor

Total area (approx.): 30.5 sq. m (328.3 sq. ft)