



## Shoot Up Hill, NW2

£500,000

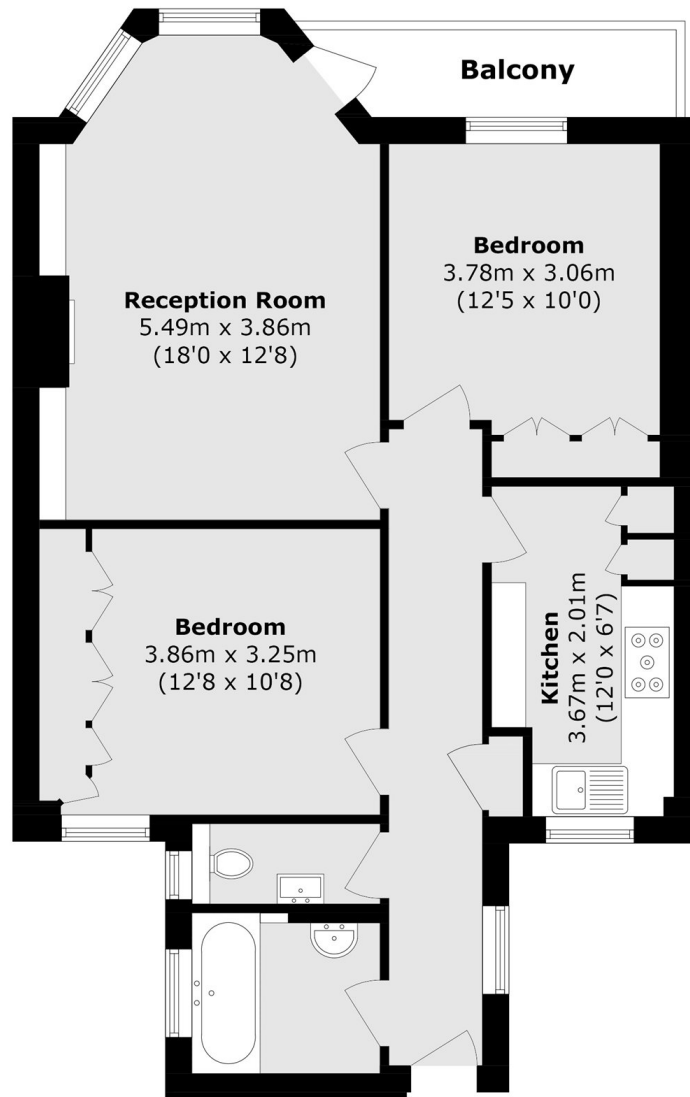
Located on the second floor (with lift access) of this attractive Edwardian red brick mansion building is a well presented two double bedroom apartment, offering bright and spacious living spaces throughout. The property benefits from a private balcony overlooking the beautifully maintained communal garden. Residents also benefit from recently refurbished communal areas, including a brand new lift.

Mapesbury Court is conveniently located a short distance from Cricklewood Broadway and its variety of amenities such as gyms, shops, restaurants and cafes. Kilburn Station (Jubilee Line Zone 2) is also only a short distance away with a 15 minute journey to the West End and Central London.

### Features

- Chain Free
- Spacious Communal Gardens
- Close To Amenities
- Balcony
- Lift Access
- Modern Interiors

# Shoot Up Hill, London, NW2



Total Area (approx.): 67.0 sq. m (721.1 sq. ft)

Balcony area (approx.): 3.7 sq. m (39.8 sq. ft)