



**Connells**

Warwick Close  
Chandler's Ford Eastleigh

# Warwick Close Chandler's Ford Eastleigh SO53 4PH

for sale guide price  
**£300,000**



## Property Description

This charming two-bedroom semi-detached home is situated in the highly sought-after area of Chandler's Ford, offering an excellent opportunity for first-time buyers, those looking to downsize, or investors alike, with the added benefit of no onward chain.

The property boasts off-road parking for two vehicles and welcomes you inside to a spacious and inviting lounge.

To the rear, you'll find a well-appointed fitted kitchen with direct access to a bright conservatory, creating a versatile additional living space that overlooks and opens onto the garden.

Upstairs, the home comprises a generous double master bedroom, a second single bedroom ideal as a child's room or home office, and a modern family bathroom.

Externally, the rear garden is designed for ease and enjoyment, featuring a combination of patio and lawn areas, along with a practical garden shed.

Ideally located, this home is within close proximity to a range of local amenities, excellent transport links, and well-regarded schools, making it a convenient and desirable place to live.

## Lounge

Double glazed window to front aspect. TV port.

## Kitchen

Double glazed window to rear aspect.. Fitted kitchen with wall and base units. Electric cooker. Space for fridge freezer and washing machine. Stainless steel sink and drainer.

## Conservatory

Double glazed windows to rear and side aspect. Door to garden. Electrics. Light. Electric radiator.

## Landing

Stairs from lounge up to landing.



## Bedroom 1

Double glazed window to front aspect. Electric radiator. Built in cupboard over stairs.

## Bedroom 2

Double glazed window to rear aspect. Electric radiator. TV port. Loft access.

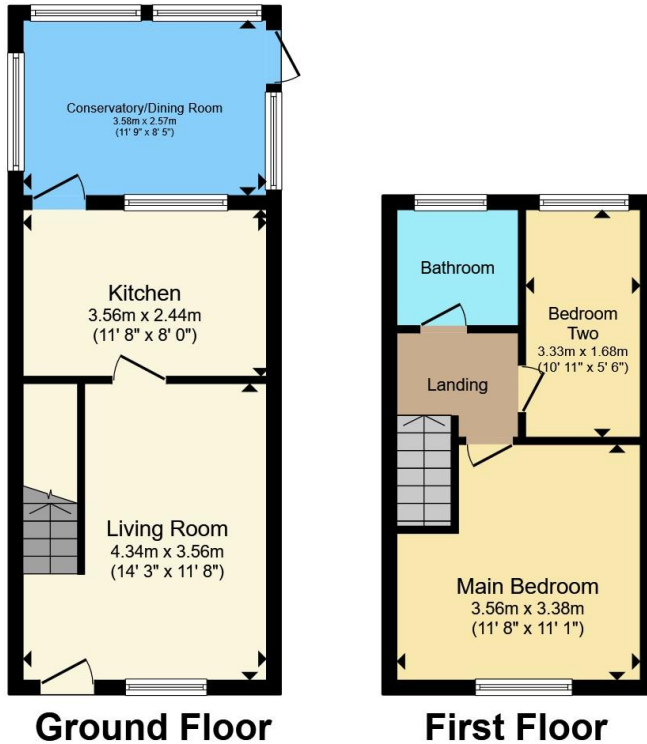
## Bathroom

Double glazed window to rear aspect. Bath with mixer taps. Vanity sink and fitted cupboard. Toilet. Electric towel rail. Part tiled.

## Outside

Driveway to side of property for two cars. To the rear. Private rear garden with patio and lawn. Shed.





Total floor area 58.8 m<sup>2</sup> (633 sq.ft.) approx

This floor plan is for illustrative purposes only. It is not drawn to scale. Any measurements, floor areas (including any total floor area), openings and orientation are approximate. No details are guaranteed, they cannot be relied upon for any purpose and they do not form part of any agreement. No liability is taken for any error, omission or misstatement. A party must rely upon its own inspection(s). Powered by [www.propertybox.io](http://www.propertybox.io)



To view this property please contact Connells on

**T 02380 618 343**  
**E [eastleigh@connells.co.uk](mailto:eastleigh@connells.co.uk)**

19 Market Street  
 EASTLEIGH SO50 5RH

EPC Rating: D Council Tax  
 Band: B

**view this property online [connells.co.uk/Property/EGH309411](http://connells.co.uk/Property/EGH309411)**

Tenure: Freehold



1. MONEY LAUNDERING REGULATIONS Intending purchasers will be asked to produce identification documentation at a later stage and we would ask for your co-operation in order that there will be no delay in agreeing the sale. 2. These particulars do not constitute part or all of an offer or contract. 3. The measurements indicated are supplied for guidance only and as such must be considered incorrect. Potential buyers are advised to recheck measurements before committing to any expense. 4. We have not tested any apparatus, equipment, fixtures, fittings or services and it is in the buyers interest to check the working condition of any appliances.

Connells Residential is registered in England and Wales under company number 1489613, Registered Office is Cumbria House, 16-20 Hockliffe Street, Leighton Buzzard, Bedfordshire, LU7 1GN. VAT Registration Number is 500 2481 05.

**See all our properties at [www.connells.co.uk](http://www.connells.co.uk) | [www.rightmove.co.uk](http://www.rightmove.co.uk) | [www.zoopla.co.uk](http://www.zoopla.co.uk)**

Property Ref: EGH309411 - 0002