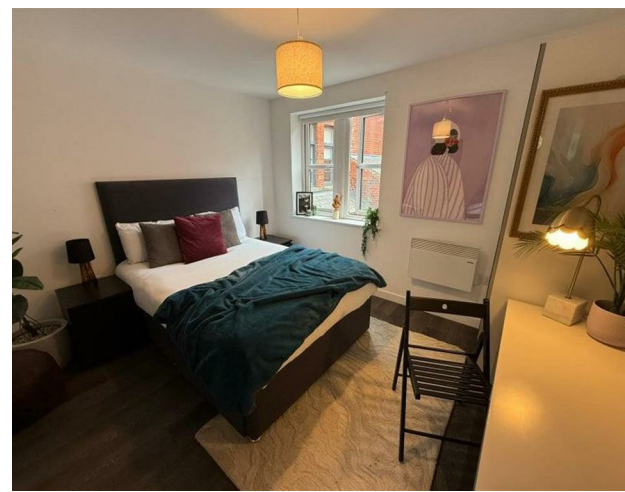


Flat 1, 20A Hyde Terrace, Leeds, LS2 9LN  
£3,250

**V&L**  
PROPERTIES



Flat 1, 20A Hyde Terrace, Leeds, LS2 9LN

£3,250

Council Tax Band:

Property Features:

Spacious and well-presented reception room, ideal for relaxing or entertaining

Living room includes a 50-inch TV

Comfortable private bedroom offering both privacy and practicality

Modern en-suite bathroom for added convenience

Modern fitted kitchen with practical storage and workspace

Bright and welcoming living space throughout

Rent: £125 pppw



22 Regent Street  
 Leeds  
 LS2 7QA  
 01133 225737  
[info@vgl-properties.co.uk](mailto:info@vgl-properties.co.uk)  
[vgl-properties.co.uk](http://vgl-properties.co.uk)

