

tavistockbow

For Rent



People Make Places



Odhams Walk, Covent Garden WC2

1 bedroom | 560 sq ft

£595 pw





This well-proportioned and spacious one bedroom apartment benefits from a private terrace. Positioned in a modern development off Neal Street in central Covent Garden, just seconds from Covent Garden tube station and has plentiful storage. Available furnished, late June.

What you need to know

- One bedroom
- Second floor
- Spacious private terrace
- Great location
- Wood floors
- Furnished
- Good size bedroom
- Overlooks Neal Street
- Available late June
- Close to Covent Garden tube





Overview

Set in a gated development moments from the Piazza, this one bedroom apartment has a large private terrace and well-proportioned rooms. Odhams Walk was built in 1979 using a design of geometry and is considered an oasis of calm in London's West End, which is gated after dark. The apartment has a good-sized living room with a semi-open plan kitchen. There is a double bedroom with walk in wardrobe, a white suite bathroom and useful storage.

Odhams Walk lies between Long Acre and Shelton Street with Covent Garden and Seven Dials on its doorstep. Transport links can be reached via nearby Covent Garden (Piccadilly Line), Holborn (Central and Piccadilly Lines) and Tottenham Court Road (Central, Northern and Elizabeth Lines) Underground Stations. Soho, Mayfair, the Southbank, Holborn and Fitzrovia are all easily accessible on foot.

The apartment is available late June on a furnished basis. Subject to contract and satisfactory references. Westminster Council tax band: E.



Odhams Walk, Covent Garden WC2

People Make Places

London is a collection of inspiring urban villages and one of the most exciting places in the world to live, work & play.

We work with both property owners and their occupiers, sharing the story of these vibrant neighbourhoods, conveying the unique soul & energy to future custodians, the people who'll keep them buzzing.

And unlike many real estate businesses we're not just about buildings, because streets & buildings don't make a neighbourhood.

We're about building relationships, because **people make places**.

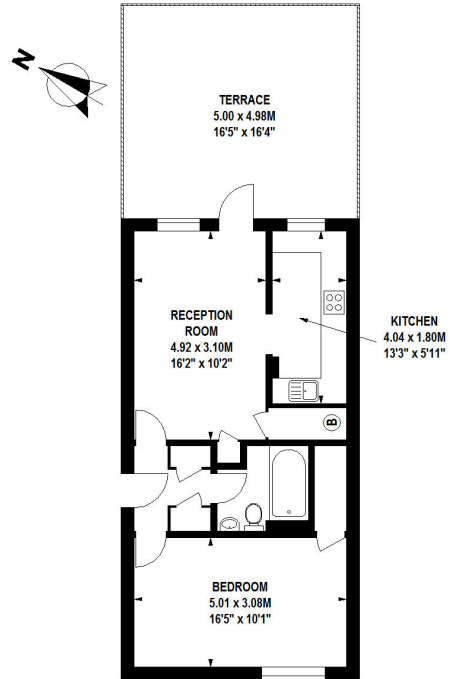
MISINTERPRETATION ACT (COPYRIGHT) DISCLAIMER: Tavistock Bow Ltd for themselves and for the vendor(s) of this property whose agents they are, given notice that: 1. These particulars do not constitute, nor constitute any part of, an offer or contract. 2. None of the statements contained in these particulars as to the property are to be relied on as statements or representations of fact. 3. Any intending purchaser or lessee must satisfy themselves by inspection or otherwise as to the correctness of each of the statements contained in these particulars. 4. The vendor(s) or lessor(s) do not make or give and neither Tavistock Bow Ltd nor any person in their employment has any authority to make or give any representation or warranty whatever in relation to this property. Finance Act 1989, Unless otherwise stated all prices and rents are quote exclusive of VAT. Property Misrepresentation Act 1991; These details are believed to be correct at the time of compilation but may be subject to subsequent amendment.

Follow us:     @tavistockbow

Score	Energy rating	Current	Potential
92+	A		
81-91	B		
69-80	C		69 C
55-68	D		
39-54	E	54 E	
21-38	F		
1-20	G		

Odhams Walk, WC2H

Approximate gross internal area
52 sq m / 560 sq ft



Second Floor

Floor Plan produced for Tavistock Bow by Mays Floorplans © . Tel 020 3397 4594
Illustration for identification purposes only, not to scale
All measurements are maximum, and include wardrobes and window bays where applicable

tavistockbow

21 New Row, Covent Garden,
London, WC2N 4LE

t: 020 7477 2177
e: hello@tavistockbow.com
w: tavistockbow.com



Odhams Walk, Covent Garden WC2