



**Stoneacre**  
Properties



### **Temple Court, Leeds, LS15 0DP**

**£100,000**

Offered to the market is this lovely two bedroom ground floor apartment located on Temple Court, Leeds. The property is situated in a sought after location close to all local amenities including: shops, schools and transport links. The property briefly comprises of: Kitchen, lounge/diner, two bedrooms and shower room. Externally the property benefits from a shared rear garden with grass laid to lawn. This property would be ideal for first time buyers or for investment purposes. To arrange your viewing please contact the office today.

## ENTRANCE



Door to the side elevation.

## KITCHEN



Range or wall and base units. Integrated double oven with electric hob and extractor fan above. Integrated microwave. Sink and drainer. Space for fridge/freezer. Double glazed window to the front elevation. Door to the side elevation. Storage cupboard.

## LOUNGE/DINER



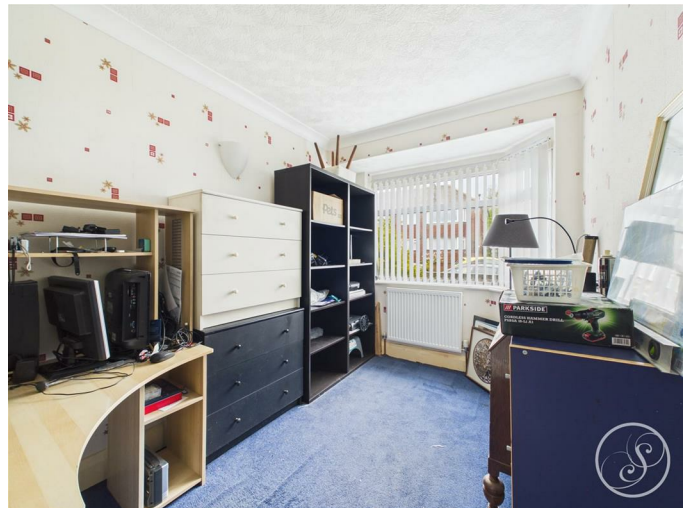
Double glazed window to the rear elevation. Central heating radiator. Fire with surround.

## BEDROOM ONE



Double glazed window to the rear elevation. Central heating radiator.

## BEDROOM TWO



Double glazed window to the front elevation. Central heating radiator.

## SHOWER ROOM



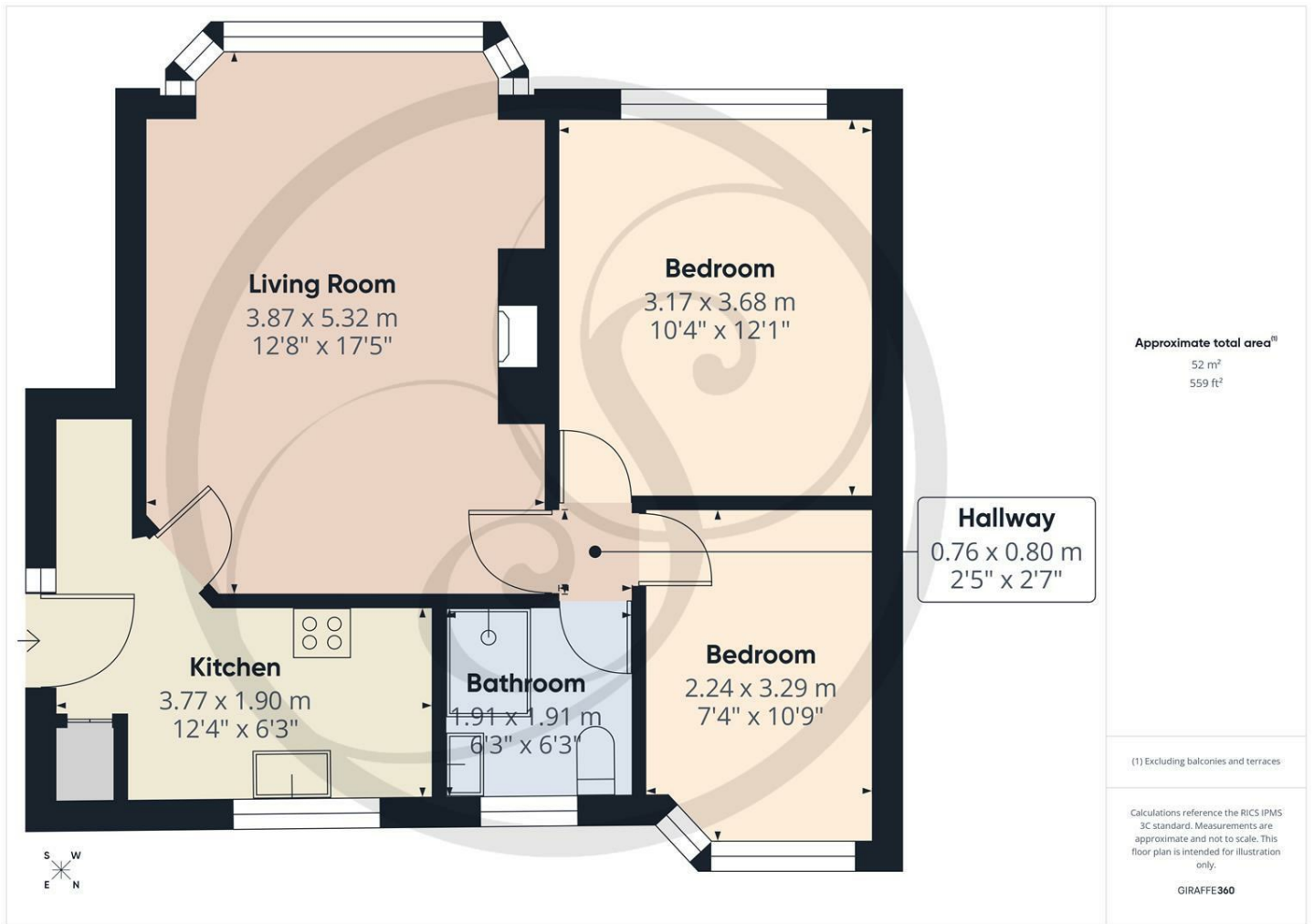
Double glazed frosted window to the front elevation. Low flush w.c. Wash hand basin. Shower cubicle. Heated towel rail.

## EXTERNAL

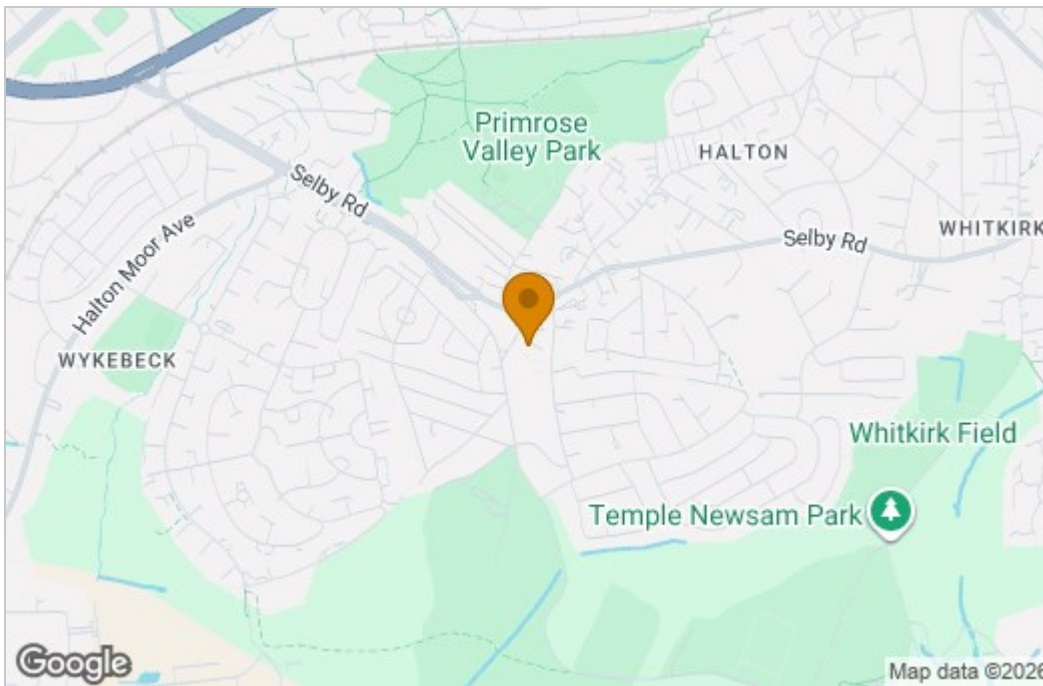


Shared rear garden with grass laid to lawn.

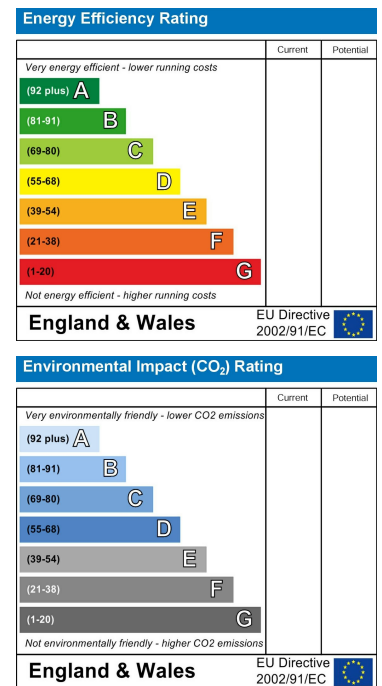
## Floor Plan



## Area Map



## Energy Efficiency Graph



These particulars, whilst believed to be accurate are set out as a general outline only for guidance and do not constitute any part of an offer or contract. Intending purchasers should not rely on them as statements of representation of fact, but must satisfy themselves by inspection or otherwise as to their accuracy. No person in this firm's employment has the authority to make or give any representation or warranty in respect of the property.

