

Wharncliffe Mews, SW4

£400,000

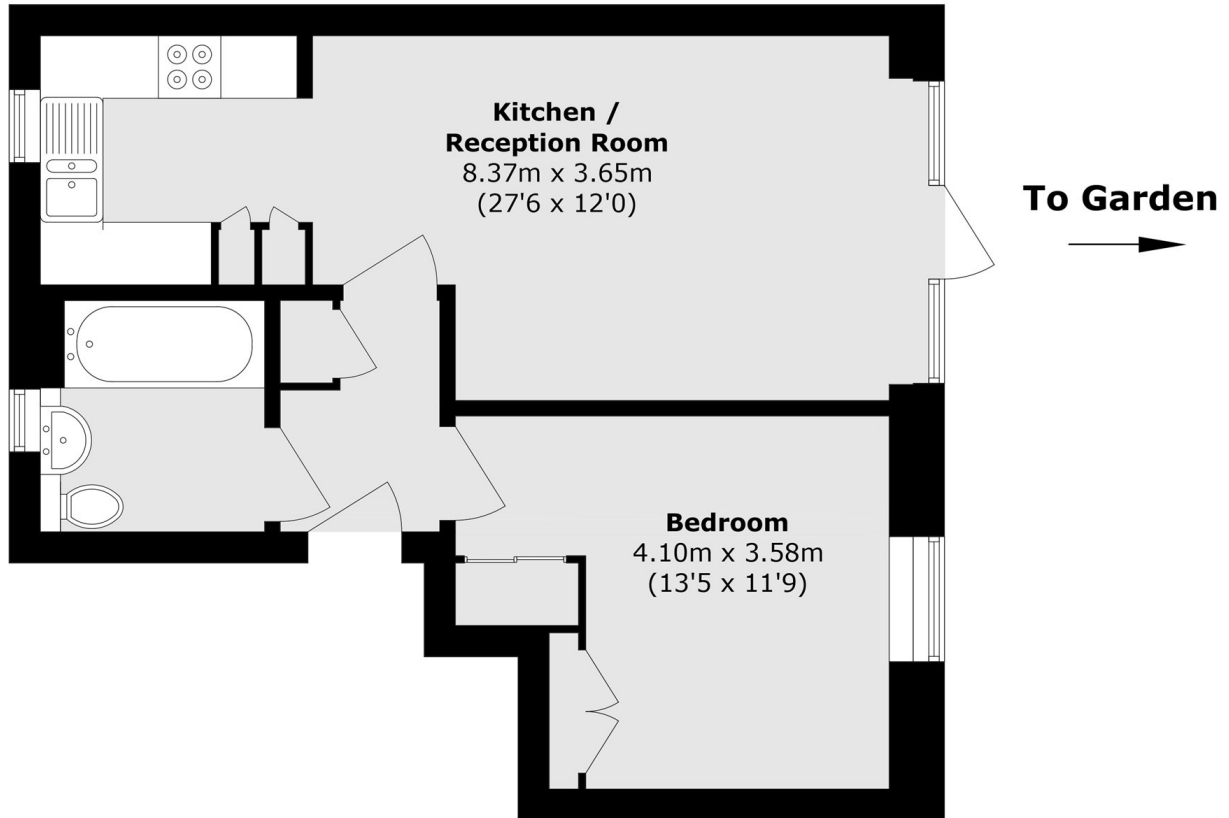
Offers In Excess Of. This contemporary ground floor apartment is situated within a desirable, private mews and has undergone extensive refurbishment. Comprising a spacious reception room with an adjoining kitchen which features a range of integrated appliances, a double bedroom with fitted wardrobes and a modern bathroom. Outside, there is a large, private south-west facing garden. Offered to the market with a long lease and no onward chain.

Clarence Avenue is ideally situated for the many local boutique shops, restaurants and bars of Abbeville Village, and the green open spaces of Clapham Common. Clapham Common & Clapham South stations are just a short walk away.

Features

- Ground Floor Apartment
- Reception Room
- Integrated Kitchen
- Private Garden
- Long Lease
- Chain Free

Wharncliffe Mews, London, SW4



Total area (approx.): 49.2 sq. m (529.5 sq. ft)