

Eltham Crescent, Thornaby



£60,000

**IH** INGLEBY HOMES



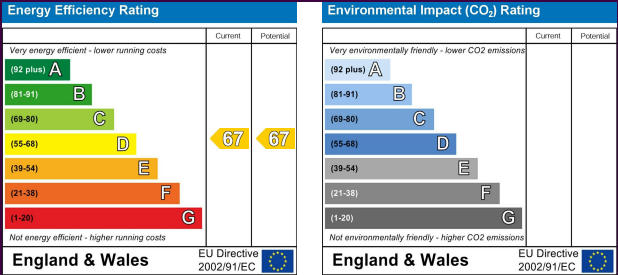
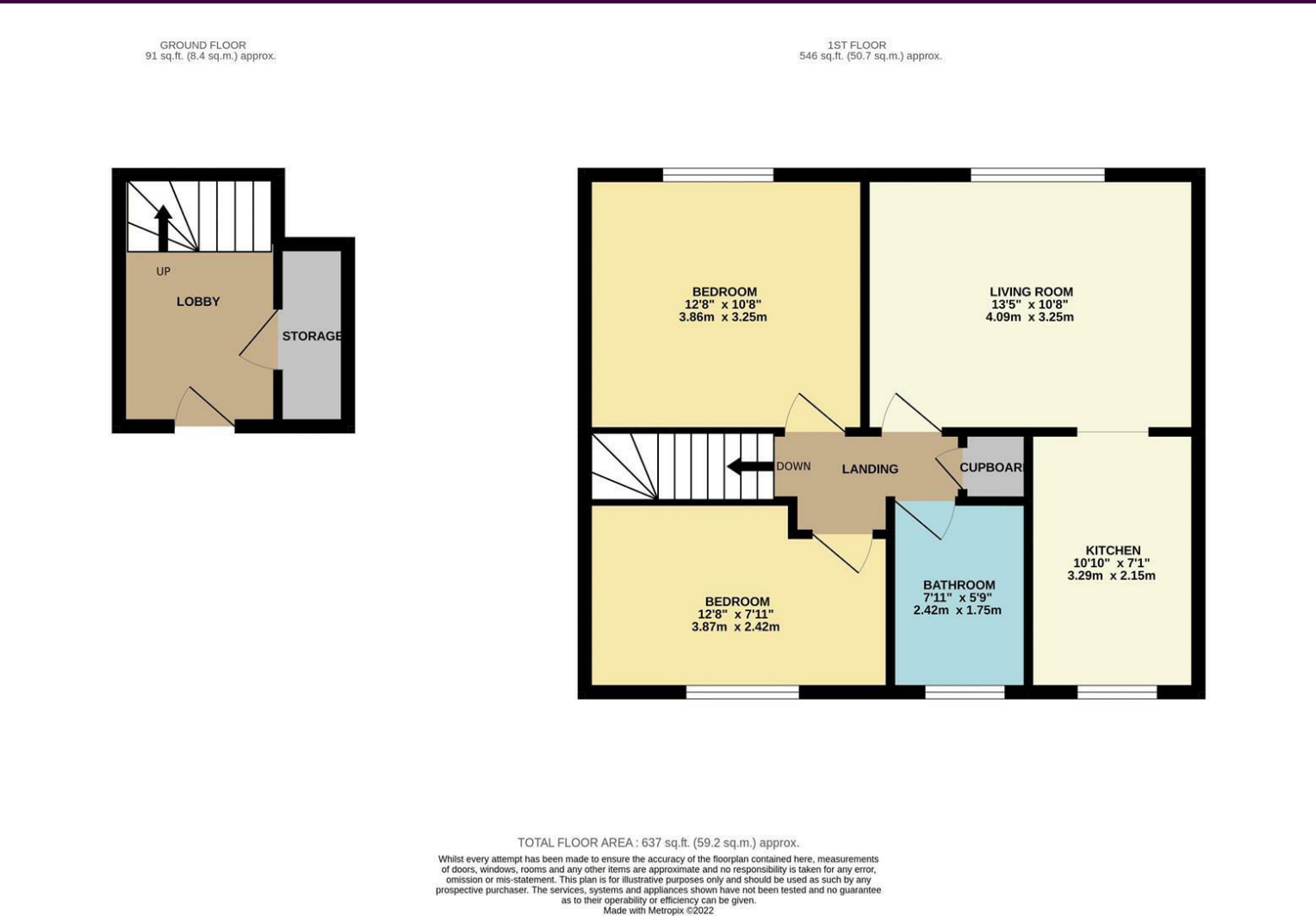


An attractive, and deceptively spacious, two bedroom flat, situated on the first floor of this purpose built development, and available with 'No Forward Chain'.

Positioned just off 'Tedder Avenue' within this popular Thornaby area, with good local amenities and road networks. Smart and 'ready to move into' - the accommodation briefly comprises an entrance hall with storage, stairs to the first floor, on which you find two good bedrooms, the bathroom, a spacious living room, and fitted kitchen.



# The Layout



# The Location



Council Tax Band: A  
Tenure: Leasehold



- Spacious two bedroom flat
- Popular Thornaby area
- Generous living room, fitted kitchen
- Smart, and ready to 'move into'
- No forward chain