



Guide Price
£495,000

Freehold

4x  2x  1x 

**Stour Road, Chartham,
Canterbury, Kent, CT4**

OVER 60?

Secure this property
for up to **59% less!**

Wards
Helping you move forwards



Main features

- Beautifully presented semi detached chalet bungalow
- Wonderful views overlooking fields
- Stunning main bedroom with large windows and a Juliette balcony
- Resin driveway for multiple vehicles
- Amazing open plan living space with bi-folding doors onto the rear garden

Accommodation

GROUND FLOOR

Entrance Hallway

Bedroom 3: 10'11 up to fitted wardrobes x 10'3 (3.33m x 3.13m)

Bedroom 4: 11'11 x 8'11 (3.63m x 2.72m)

Bathroom: 7'11 x 7'8 (2.41m x 2.34m)

Kitchen/Lounge/Diner: 22'8 x 21'0 (6.91m x 6.41m)

Utility Room: 11'6 x 8'8 (3.51m x 2.64m)

FIRST FLOOR

Landing

Bedroom 1: 18'9 x 17'7 (5.72m x 5.36m)

Bedroom 2: 12'9 x 10'7 (3.89m x 3.23m)

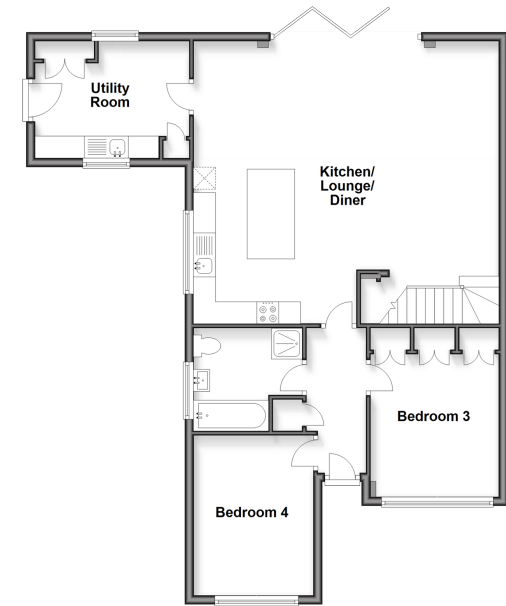
Bathroom: 13'0 x 13'0 (3.97m x 3.97m)

OUTSIDE

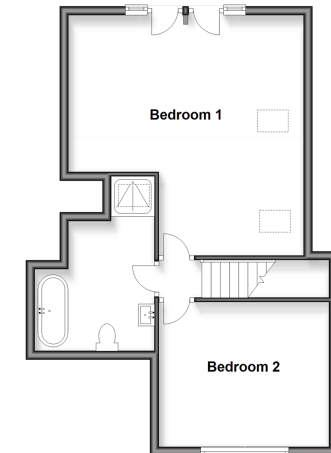
Driveway

Rear Garden

Ground Floor
Approx. 86.9 sq. metres (935.0 sq. feet)



First Floor
Approx. 50.6 sq. metres (544.7 sq. feet)



Call Canterbury - 01227 766669 ■ wardsof Kent.co.uk

- If buying to let, the energy rating will need to be improved to at least 'E' rating before you can let the property
- Through a Homewise Home For Life Plan people aged 60+ can secure this property for up to 59% less, by purchasing a Lifetime Lease



10349691/20260324/TG/JT