



Jack Taggart & Co

RESIDENTIAL SALES AND LETTINGS

**£550,000**

**Benfield Crescent**

Brighton, BN41 2DB



## PROPERTY SUMMARY

This beautifully modernised three-bedroom, semi-detached 1930s family home is situated in the highly sought-after and tranquil residential area of Portslade. Combining period charm with modern finishes, this property has been thoughtfully updated to a high standard, offering a perfect balance of style and practicality. With excellent potential for further extension (subject to planning permission), it presents a fantastic opportunity for growing families or couples looking to settle in a thriving community. Nestled in a peaceful and desirable neighbourhood, the property benefits from a welcoming and family-friendly atmosphere. The highlight of the exterior is the expansive rear garden, a private sanctuary offering ample space for children to play, host garden parties, or simply relax in the outdoors. The garden's size provides significant scope for landscaping, including areas for outdoor dining, planting, or even a play structure. Upon entering, the ground floor welcomes you with an impressive layout. Two reception rooms have been expertly combined to create a spacious and versatile open-plan living area that flows seamlessly into the dining space. This open-concept design is ideal for both everyday family life and entertaining guests. A large opening leads into the stunning, contemporary kitchen, which forms the heart of the home. The kitchen itself is a testament to both form and function, featuring an elegant yet practical design. Ample storage is provided by sleek wall and base units, complemented by a stylish butler sink, durable solid wood countertops, and high-quality built-in appliances.

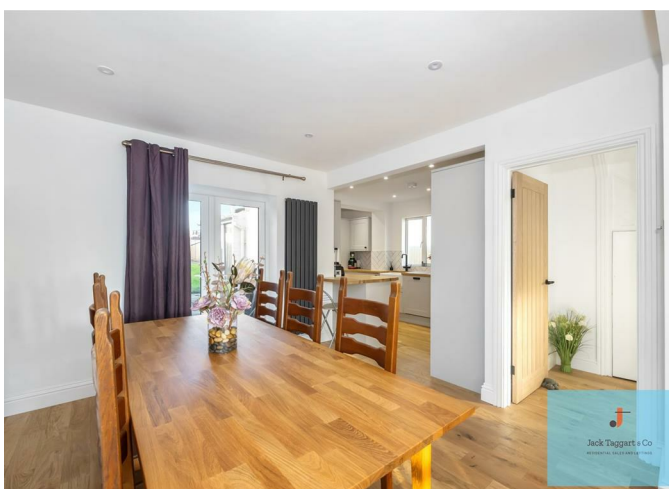
3



1

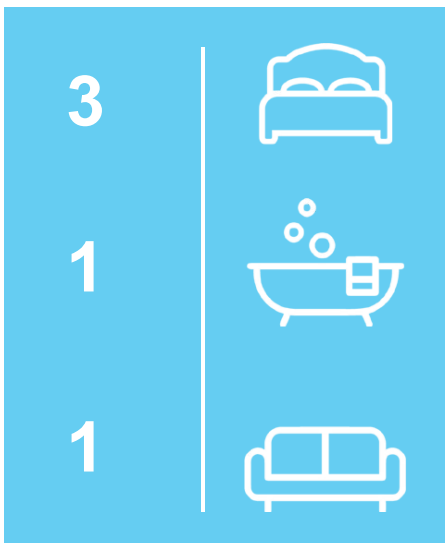


1









Energy Efficiency Rating		
	Current	Potential
Very energy efficient - lower running costs		
(92 plus) A		
(81-91) B		
(69-80) C		
(55-68) D		
(39-54) E		
(21-38) F		
(1-20) G		
Not energy efficient - higher running costs		
England & Wales		EU Directive 2002/91/EC

Agents Note: Whilst every care has been taken to prepare these particulars, they are for guidance purposes only. All measurements are approximate and are for general guidance purposes only and whilst every care has been taken to ensure their accuracy, they should not be relied upon and potential buyers/tenants are advised to recheck the measurements