

**RUSH  
WITT &  
WILSON**



**Wraymead Sedlescombe Road South, St Leonards-On-Sea, TN38 0FR  
Offers In The Region Of £325,000 Freehold**

**This delightful bungalow, built in 2007, is a perfect blend of modern living and eco-friendly design. With a strong focus on sustainability, Upon entering, you are greeted by a spacious and welcoming entrance hall that provides access to the principal rooms and the bathroom. The accommodation includes two generous double bedrooms, both accessible from the main hallway. The master bedroom is particularly inviting, featuring a bay window and a contemporary en-suite shower room, offering a private retreat. The separate kitchen is well-equipped with ample storage space and conveniently connects to the rear garden, making it easy to enjoy outdoor dining or gardening. The light-filled living room is a highlight of the home, with direct access to a spacious decking area that overlooks the well-established rear garden. This outdoor space is ideal for relaxation and entertaining, providing a serene environment to unwind. Additional features of this property include a garage and ample off-road parking, ensuring convenience for residents and guests alike. The vegetable garden offers a wonderful opportunity for those with a green thumb, perfect for cultivating fresh produce. This eco-conscious bungalow not only provides modern comforts but also enjoys a sought-after location, making it an excellent opportunity for a variety of buyers seeking a harmonious blend of sustainability and style.**







RUSH  
WITT &  
WILSON



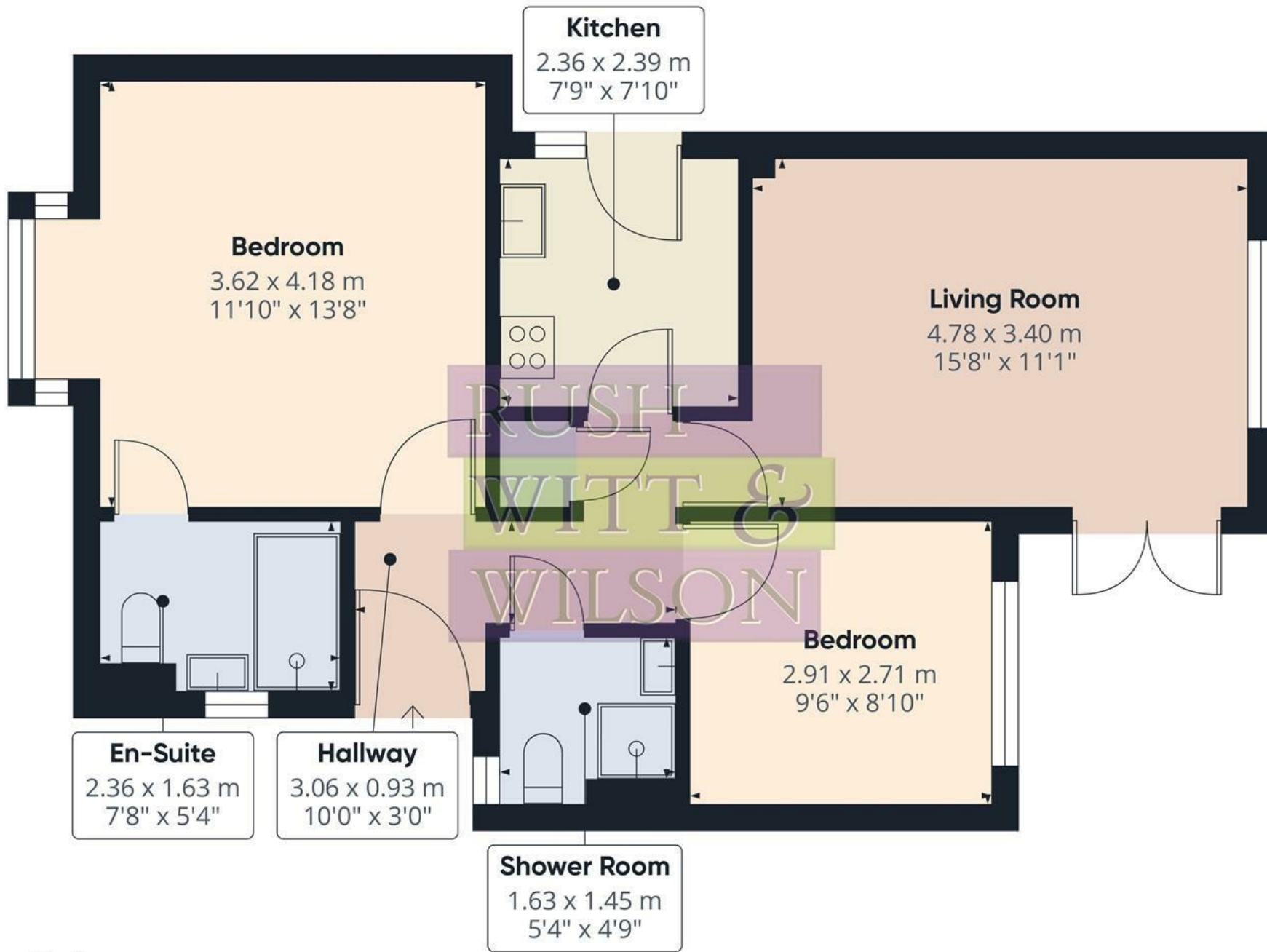
RUSH  
WITT &  
WILSON



RUSH  
WITT &  
WILSON



RUSH  
WITT &  
WILSON



Approximate total area<sup>(1)</sup>

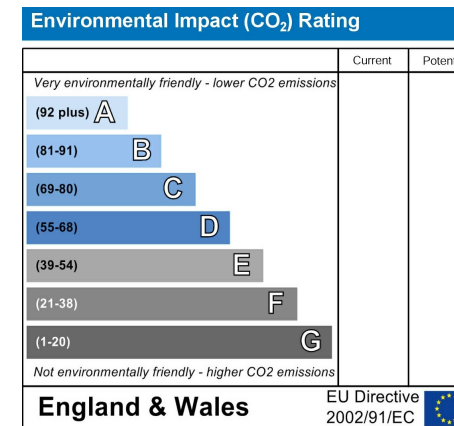
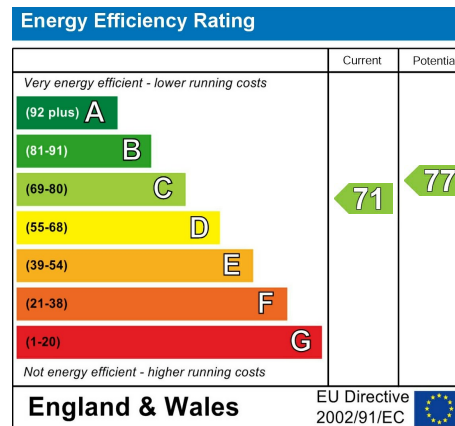
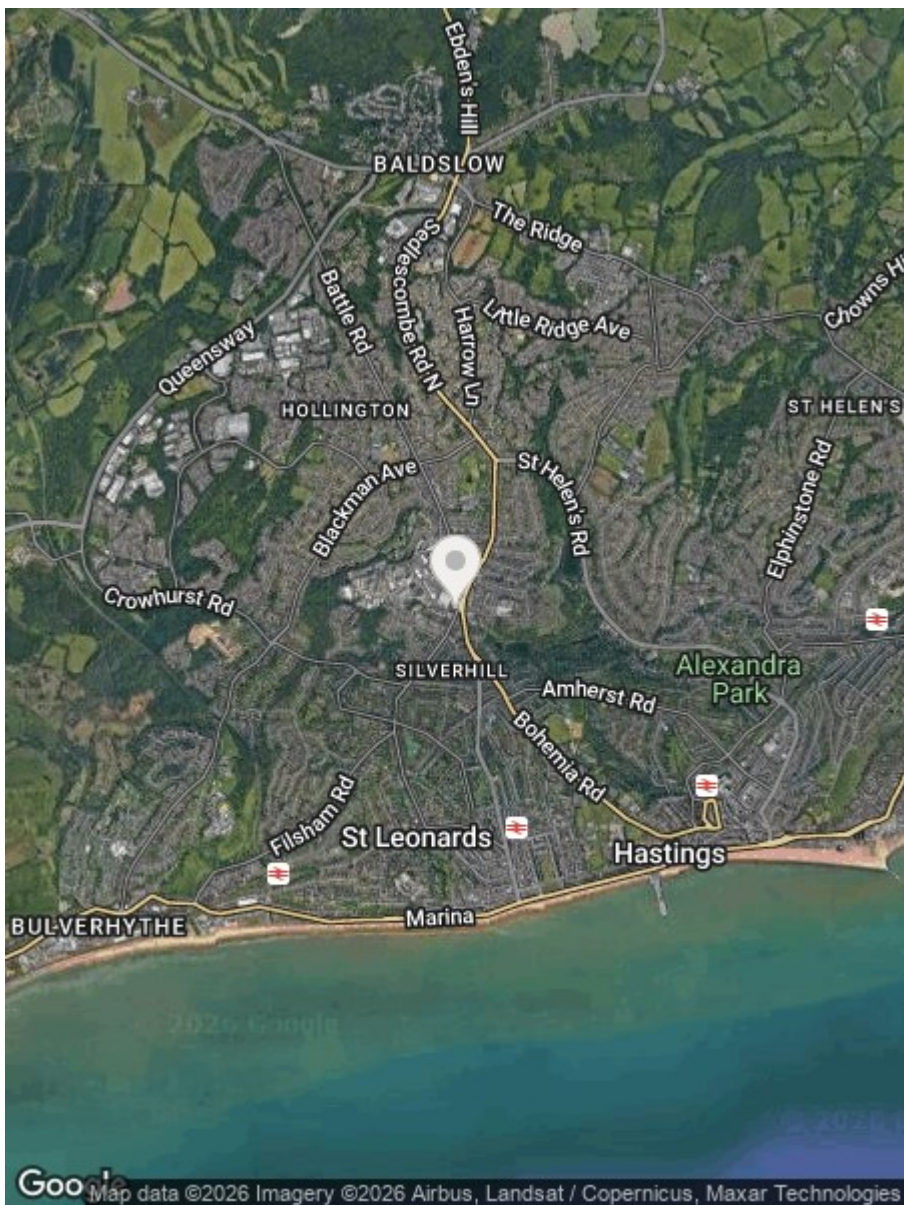
59.5 m<sup>2</sup>  
641 ft<sup>2</sup>

(1) Excluding balconies and terraces

Calculations reference the RICS IPMS 3C standard. Measurements are approximate and not to scale. This floor plan is intended for illustration only.

GIRAFFE360





Council Tax Band - C

Fixtures and fittings: A list of the fitted carpets, curtains, light fittings and other items fixed to the property which are included in the sale (or may be available by separate negotiation) will be provided by the Seller's Solicitors.

Important Notice:

1. Particulars: These particulars are not an offer or contract, nor part of one. You should not rely on statements by Rush, Witt & Wilson in the particulars or by word of mouth or in writing ("information") as being factually accurate about the property, its condition or its value. Neither Rush, Witt & Wilson nor any joint agent has any authority to make any representations about the property, and accordingly any information given is entirely without responsibility on the part of the agents, seller(s) or lessor(s).
2. Photos, Videos etc: The photographs, property videos and virtual viewings etc. show only certain parts of the property as they appeared at the time they were taken. Areas, measurements and distances given are approximate only.
3. Regulations etc: Any reference to alterations to, or use of, any part of the property does not mean that any necessary planning, building regulations or other consent has been obtained. A buyer or lessee must find out by inspection or in other ways that these matters have been properly dealt with and that all information is correct.
4. VAT: The VAT position relating to the property may change without notice.
5. To find out how we process Personal Data, please refer to our Group Privacy Statement and other notices at <https://rushwittwilson.co.uk/privacy-policy>

**RUSH  
WITT &  
WILSON**

**Residential Estate Agents  
Lettings & Property Management**



**Rother House Havelock Road  
Hastings  
East Sussex  
TN34 1BP  
Tel: 01424 442443  
hastings@rushwittwilson.co.uk  
www.rushwittwilson.co.uk**