



Bonser Road, TW1

£1,600 Per calendar month

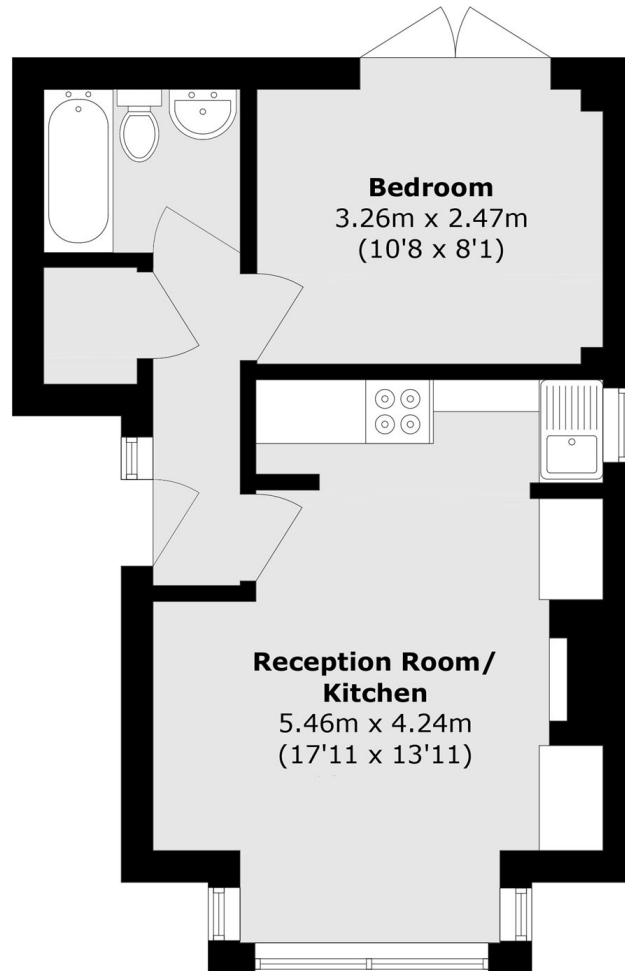
A beautifully presented one bedroom conversion flat located in this pretty tree lined residential road. The property offers a very pleasant sitting room with large bay window and feature fireplace, open plan kitchen area, modern bathroom and a double bedroom with double doors onto a small decked area

Bonser Road is a most desirable road close to the bank of the River Thames. There are frequent trains to Waterloo available from either Twickenham mainline station or Strawberry Hill station.

Features

- Ground Floor Flat
- One Bedroom
- Open Plan
- Fitted Wardrobes
- Wood Floors
- Central Location

Bonser Road, Twickenham, TW1



Total area (approx.): 35.4 sq. m (381.0 sq. ft)