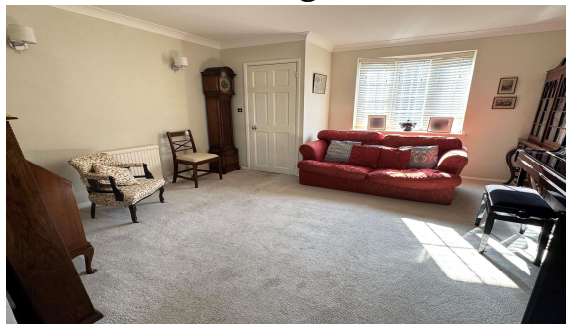




Hummer Road, Egham, TW20 9BS

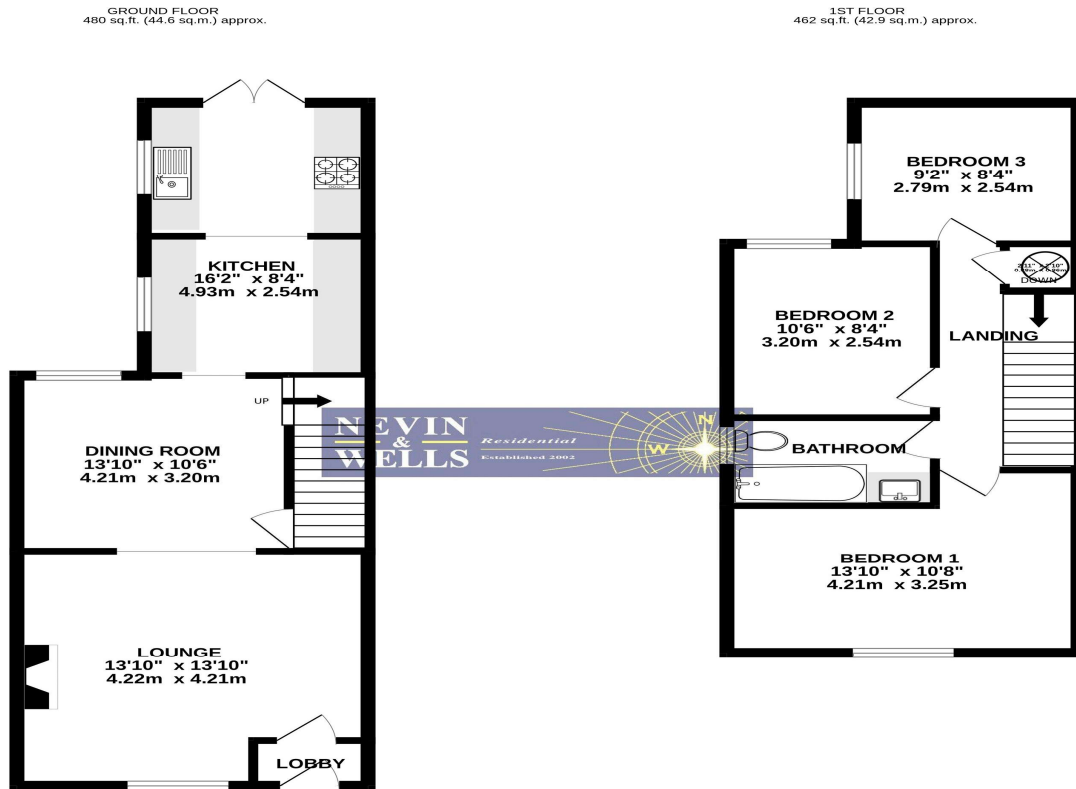
O.I.E.O £500,000 F/H



A stunning Edwardian three bedroom semi detached home, situated in the heart of Egham, minutes from the mainline station and High street. This extended property offers two large reception rooms, fully fitted shaker style kitchen, luxury first floor bathroom and ample built in storage. Externally, there us a well stocked 45ft (13.72m) garden and private brick paved parking for one car. The leisure centre, Magna Square and Runnymede National Trust are also close by.

Hummer Road, Egham, Surrey, TW20 9BS

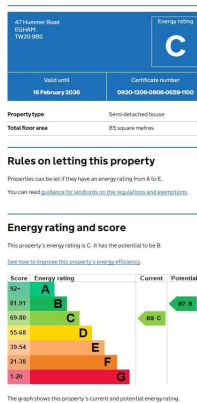
FLOOR PLAN



TOTAL FLOOR AREA : 942 sq.ft. (87.5 sq.m.) approx.

Whilst every attempt has been made to ensure the accuracy of the floorplan contained here, measurements of doors, windows, rooms and any other items are approximate and no responsibility is taken for any error, omission or mis-statement. This plan is for illustrative purposes only and should be used as such by any prospective purchaser. The services, systems and appliances shown have not been tested and no guarantee as to their operability or efficiency can be given.
Made with Metropix ©2020

EPC



PARKING:

Brick paved parking for one car

REAR GARDEN:

45ft (13.72m) Well stocked with various shrubs, paved patio and side access

COUNCIL TAX BAND:

D - Runnymede Borough Council

VIEWINGS:

By appointment with the clients selling agents, Nevin & Wells Residential on 01784 437 437 or visit www.nevinandwells.co.uk



All measurements are approximate. Nevin & Wells Residential have not tested any systems or appliances.