

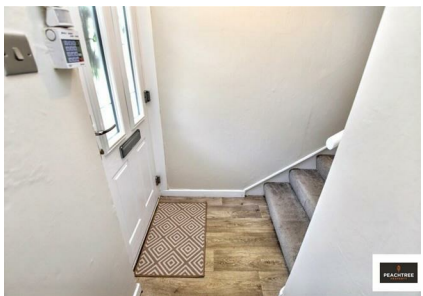
23 Moorpark Avenue, Glasgow, Glasgow City, G52 4HT

Offers Over £96,995

EPC Rating: Council Tax Band: B



**PEACHTREE**  
PROPERTY

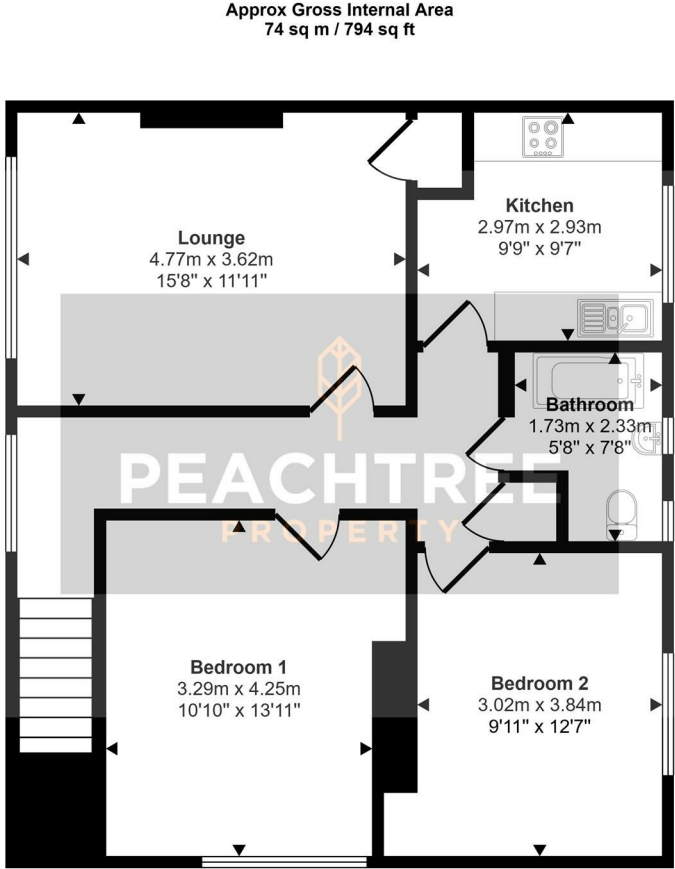


Peachtree Property are delighted to welcome to the market in well-presented order this two bedroom upper cottage flat located in a popular southside location.



28 Hairst Street Hairst St  
 Renfrew  
 PA4 8QY  
 0141 577 1111

info@peachtreeproperty.co.uk



First Floor

This floorplan is only for illustrative purposes and is not to scale. Measurements of rooms, doors, windows, and any items are approximate and no responsibility is taken for any error, omission or mis-statement. Icons of items such as bathroom suites are representations only and may not look like the real items. Made with Made Snappy 360.

Energy Efficiency Rating		Current	Potential
Very energy efficient - lower running costs			
(92 plus) <b>A</b>			
(81-91) <b>B</b>			
(69-80) <b>C</b>			
(55-68) <b>D</b>			
(39-54) <b>E</b>			
(21-38) <b>F</b>			
(1-20) <b>G</b>			
Not energy efficient - higher running costs			
<b>Scotland</b>	EU Directive 2002/91/EC		