



Holland Road, W14

£385,000

A charming first floor studio apartment located within the Royal Borough of Kensington and Chelsea. Finished to a high standard, this apartment would make a perfect home or pied-a-terre.

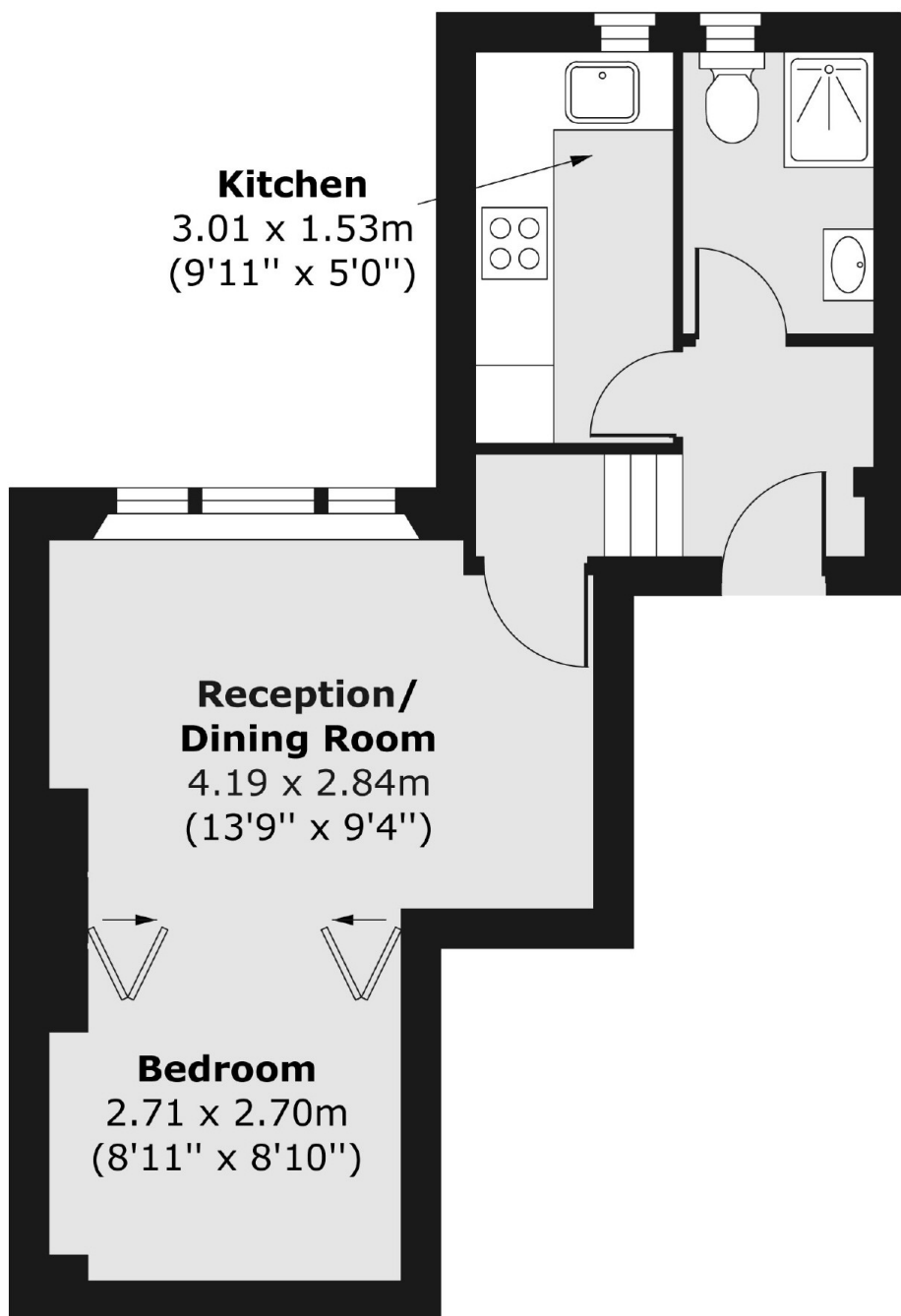
Holland Road runs from Kensington High Street to Shepherds Bush. The building faces West and is a short walk away from all the boutique shops, bars and restaurants of Notting Hill as well as the green space of Holland Park.

Features

- Share of Freehold
- Studio Apartment
- First Floor
- Elegant Finish
- Holland Park
- High Street Kensington

Holland Road, London, W14

First Floor



Total area (approx.) 31.40 sq. m (338 sq. ft)