



Tattershall Drive, Hemel Hempstead, HP2 7QG

Offers In Excess Of £385,000

Set in this popular Cul de sac in Woodhall Farm, Hemel Hempstead, this delightful semi-detached house offers a perfect blend of comfort and convenience. The property has been well-maintained and is presented in good decorative order and well kept gardens, making it an ideal choice for families or first-time buyers. One of the standout features of this property is the generous parking arrangement, complemented by a convenient driveway and a garage. Located in a friendly neighbourhood, this home is close to local amenities, an 'Outstanding' primary school, and parks. VIEWING ESSENTIAL!

Clements Estate Agents are delighted to offer this delightful semi-detached house which offers a perfect blend of comfort and convenience. The property has been well-maintained and is presented in good decorative order and well kept gardens, making it an ideal choice for families or first-time buyers. One of the standout features of this property is the generous parking arrangement, complemented by a convenient driveway and a garage. Located in a friendly neighbourhood, this home is close to local amenities, schools, and parks. CALL NOW TO VIEW!

Porch

**Lounge/Dining Room 24'0 max x 15'11 max
(7.32m max x 4.85m max)**



Lounge Area

Dining Area



Fitted Kitchen 8'8 x 7'11 (2.64m x 2.41m)



Landing

Bedroom One 13'1 x 9'4 (3.99m x 2.84m)



Bedroom Two 10'10 x 9'3 (3.30m x 2.82m)



Bedroom Three 9'8 x 6'5 (2.95m x 1.96m)



Bathroom



Outside

Front Garden

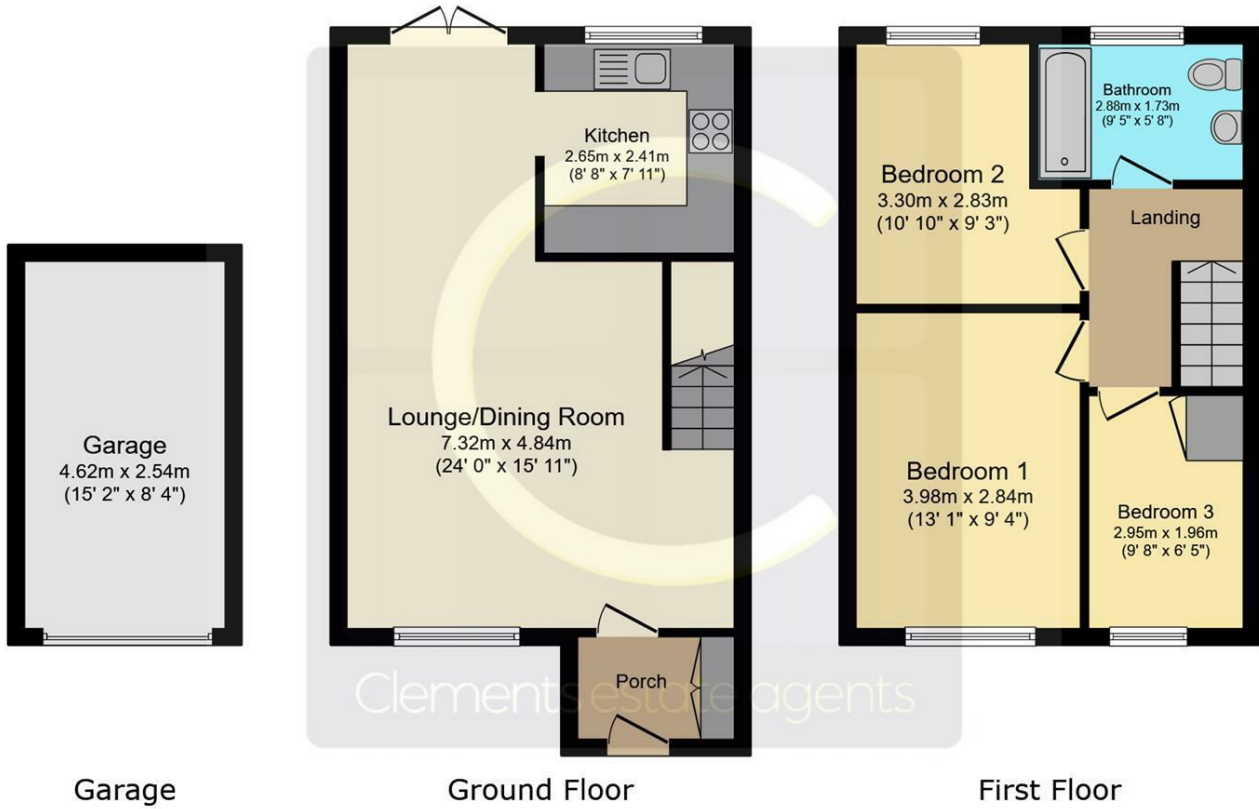
Rear Garden



Garage

Allocated Parking Space

Floor Plan

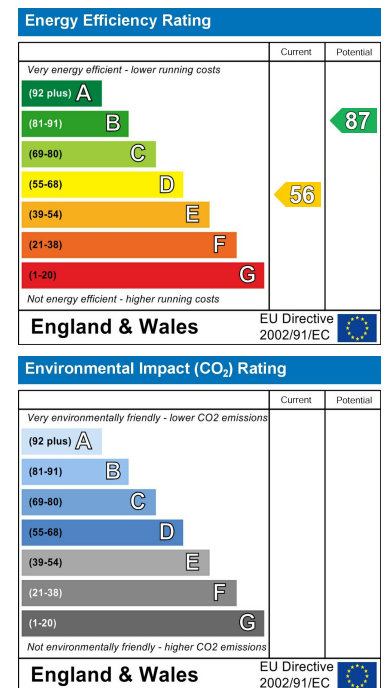


This floor plan is for illustrative purposes only. It is not drawn to scale. Any measurements, floor areas (including any total floor area), openings and orientations are approximate. No details are guaranteed, they cannot be relied upon for any purpose and do not form any part of any agreement. No liability is taken for any error, omission or misstatement. A party must rely upon its own inspection(s). Powered by www.Propertybox.io

Area Map



Energy Efficiency Graph



These particulars, whilst believed to be accurate are set out as a general outline only for guidance and do not constitute any part of an offer or contract. Intending purchasers should not rely on them as statements of representation of fact, but must satisfy themselves by inspection or otherwise as to their accuracy. No person in this firm's employment has the authority to make or give any representation or warranty in respect of the property.

45 Marlowes, Hemel Hempstead, Hertfordshire, HP1 1LD

Tel: 01442 214151 Email: sales@clementsestateagents.co.uk <https://www.clementsestateagents.co.uk>