



Kearsley Street, Eccles

Manchester



Offers Over **£200,000**

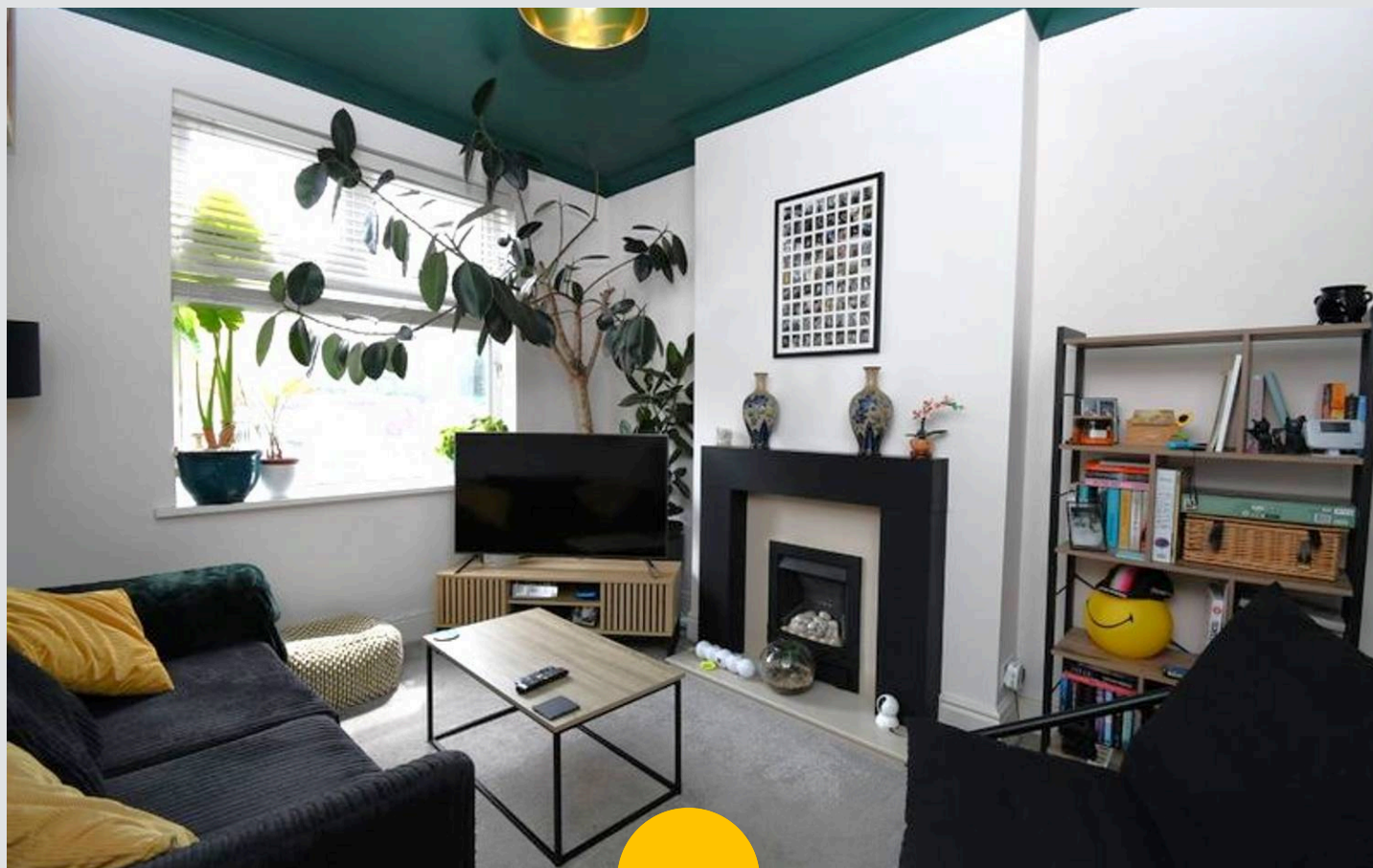
Kearsley Street

Eccles, Manchester

Well presented end terrace in Winton Village with two double bedrooms, two receptions, modern kitchen, stylish bathroom, and great transport links. Ideal for first-time buyers or investors. Council Tax band: A

Tenure: Leasehold

- Located in the heart of Winton Village surrounded by excellent amenities and just a short walk into Monton
- Well presented end Terrace property
- Lounge and second reception room
- Fitted kitchen
- Two double bedrooms the master complete with original cast-iron fireplace
- Modern three-piece bathroom suite complete with plumbing for utilities
- Sundrenched rear garden, which can double up as off-road parking
- Perfect first time home or investment
- Well served by public transport and motorway links



HILLS



Entrance Hallway

Reception Room One

12' 0" x 9' 9" (3.66m x 2.97m)

Reception Room Two

13' 0" x 10' 3" (3.96m x 3.12m)

Kitchen

9' 0" x 7' 8" (2.74m x 2.34m)

Landing

Bedroom One

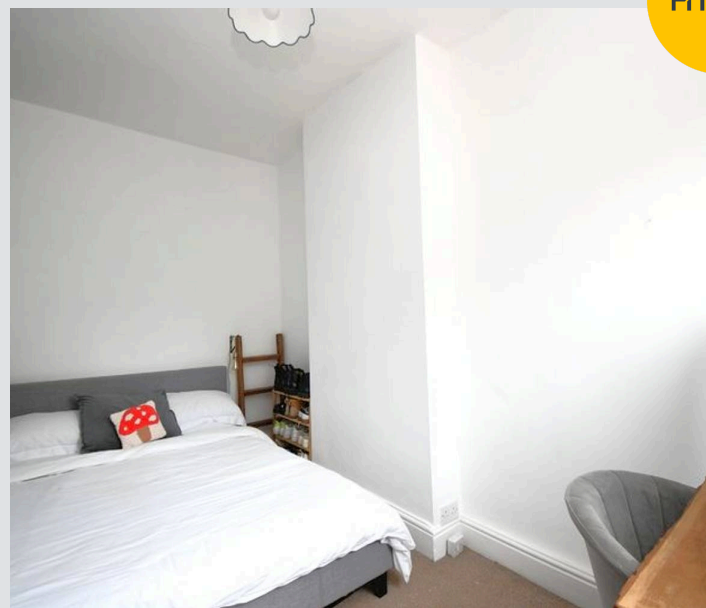
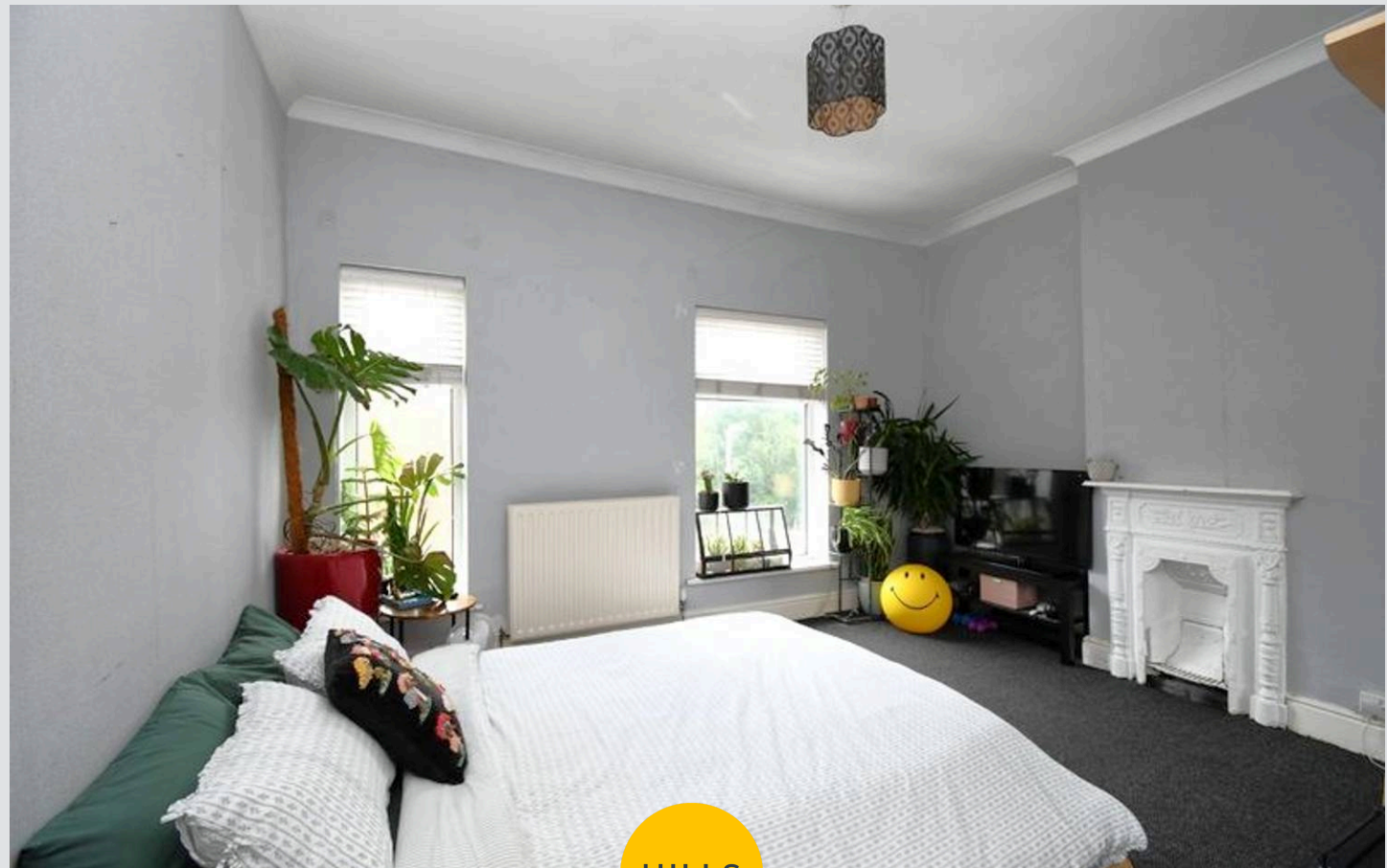
13' 4" x 11' 9" (4.06m x 3.58m)

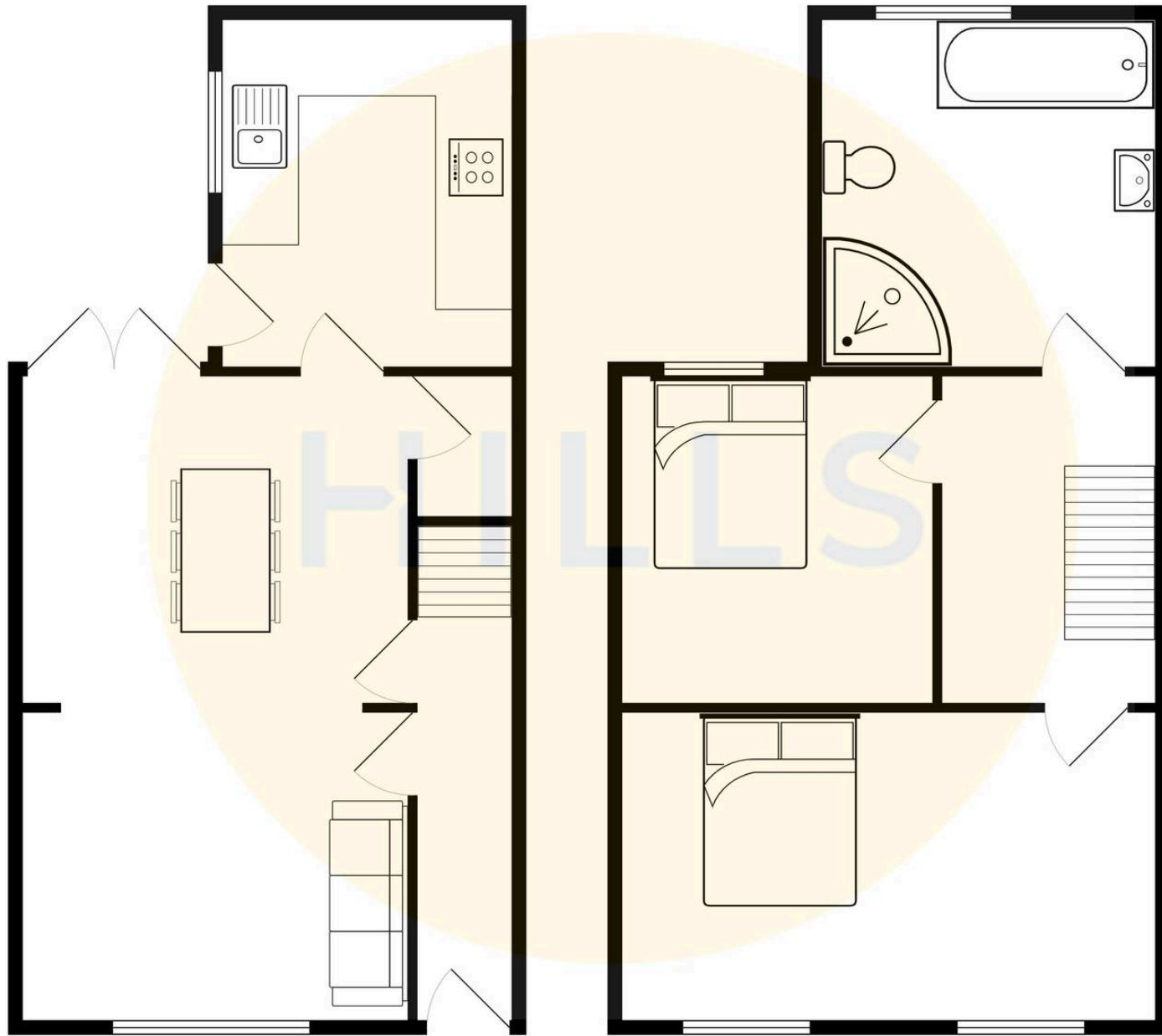
Bedroom Two

13' 0" x 7' 7" (3.96m x 2.31m)

Bathroom

8' 8" x 7' 8" (2.64m x 2.34m)







Hills | Salfords Estate Agent

Hills Residential, Sentinel House Albert Street – M30 0SS

0161 707 4900

sales@hills.agency

www.hills.agency/



By law, we are required to conduct anti-money laundering checks on all potential buyers and sellers. In line with HMRC guidelines, our trusted partner, Coadjute, will securely manage these checks on our behalf. A non-refundable fee of £45 + VAT per person will apply, and Coadjute will handle the payment. Once an offer is accepted, Coadjute will send a secure link for you to complete the biometric checks. These checks must be completed before we can send the memorandum of sale to all parties. PLEASE NOTE: The Agent has not tested any equipment, fixtures, fittings or services so cannot verify that they are in working order or fit for the purpose. References to the properties tenure are based on information supplied by the seller. You are advised to check the availability of this property before travelling any distance to view. Every effort has been made to ensure these particulars are correct and not misleading but their accuracy is not guaranteed nor do they form part of any contract.