



WHITEHORSES

Buy. Sell. Let. Relax!

0114 268 8533
info@whitehorses.com
www.whitehorses.com

6 Sterndale Road, Millhouses

Sheffield

OIRO £175,000

6 Sterndale Road

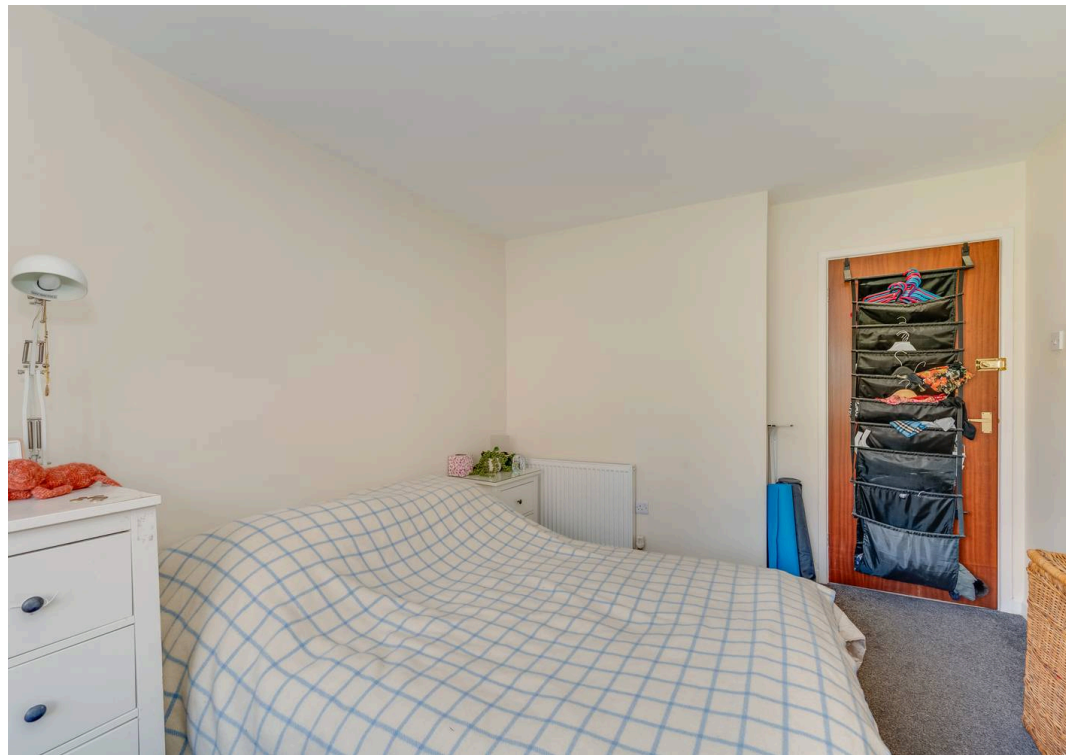
Millhouses, Sheffield

This well presented and proportioned two double bedroom first floor apartment offers spacious, light and versatile accommodation on one level, making it an ideal choice for professional couples, first time buyers, or those looking to downsize. Located in the heart of popular Millhouses on the south west side of the city, the property enjoys incredible far reaching views directly over Millhouses Park, creating a unique sense of tranquillity and open space. The apartment is offered to the market with no onward chain and benefits from a bright, airy feel throughout. The principal living area is generous, with large windows that frame the park views and allow natural light to flood the space. Both bedrooms are genuine doubles, providing ample room for furnishings and storage. The kitchen is well appointed and practical, while the bathroom is modern and finished to a high standard.

Council Tax band: B Tenure: Leasehold

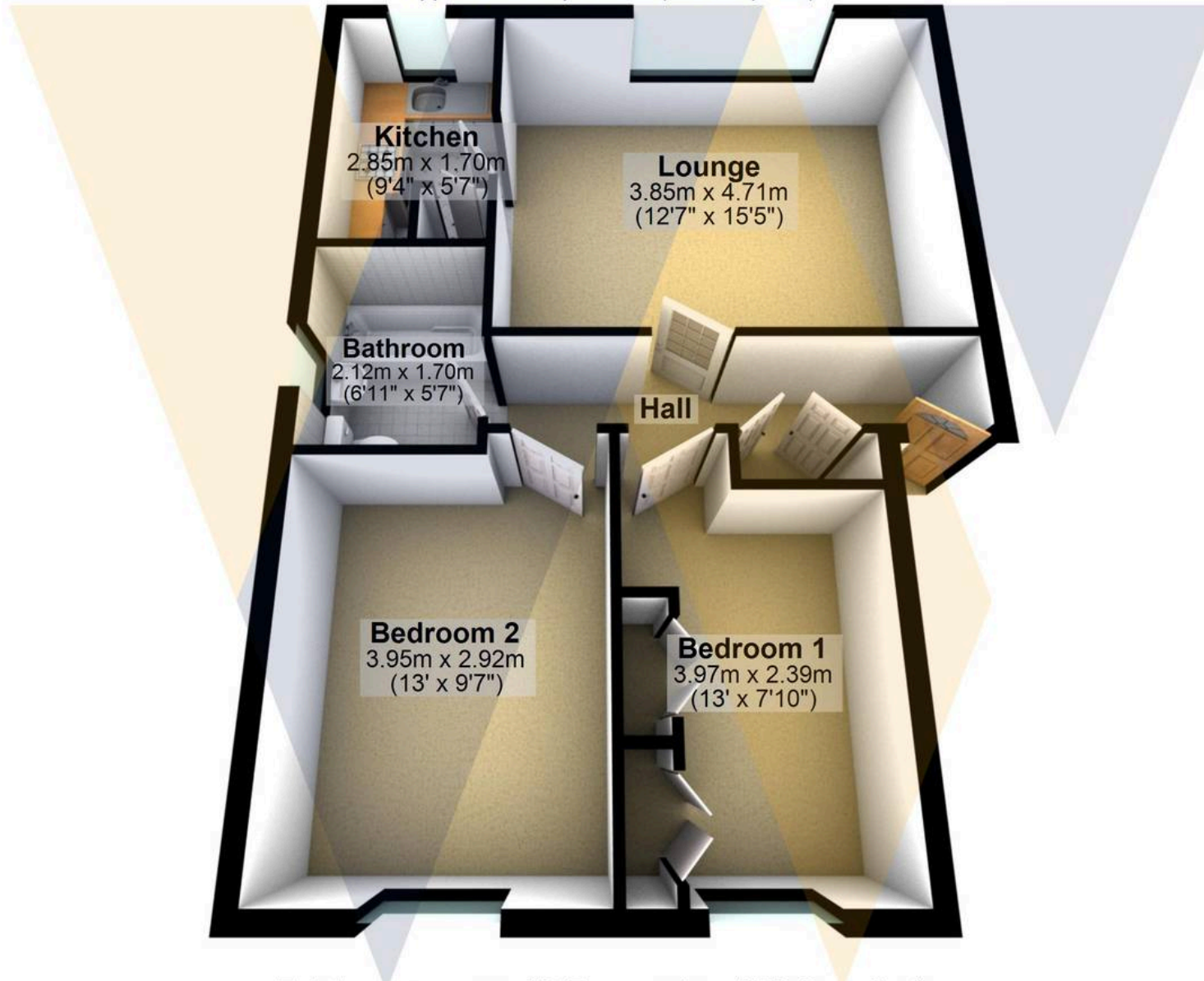
- WELL PRESENTED AND PROPORTIONED TWO DOUBLE BEDROOM FIRST FLOOR APARTMENT
- INCREDIBLE FAR REACHING VIEWS DIRECTLY OVER MILLHOUSES PARK
- PITCH PERFECT FOR THE PROFESSIONAL COUPLE FIRST TIME BUYERS OR THOSE LOOKING TO DOWNSIZE IN EQUAL MEASURES
- HEART OF POPULAR MILLHOUSES ON THE SOUTH WEST OF THE CITY
- EASY ACCESS TO NUMEROUS LOCAL AMENITIES, GREAT LOCAL SCHOOLS AND EXCELLENT PUBLIC TRANSPORT LINKS ARE AT THE BOTTOM OF THE ROAD
- SPACIOUS LIGHT AND VERSATILE ACCOMMODATION ON ONE LEVEL WITH THE BENEFIT OF NO CHAIN INVOLVED





Top Floor

Approx. 53.5 sq. metres (576.3 sq. feet)



Total area: approx. 53.5 sq. metres (576.3 sq. feet)

All measurements are approximate
Plan produced using PlanUp.

6 Sterndale Road



WHITEHORNS

Buy. Sell. Let. Relax!

0114 268 8533
info@whitehorns.com
www.whitehorns.com