



17 Oriel Meadows, Evesham, WR11 2BJ

Offers over £350,000

3 2 1 B



Offers over £350,000

17 Oriel Meadows

Evesham, WR11 2BJ

- A great position on the development, located down a no through road
- Three bedrooms, two bathrooms
- Parking and garage
- Sunny aspect to the rear
- Show home condition
- Must be viewed

SHOW HOME CONDITION - TUCKED AWAY IN A PEACEFUL POSITION

We are delighted to present to the market No. 17 Oriel Meadows, a beautifully maintained home offered in truly pristine, show home condition throughout. This exceptional property stands out not only for its high standard of presentation but also for its enviable location.

Occupying one of the most desirable positions within the Evesham Gate development, the home is tucked away at the end of a quiet no-through road, providing a peaceful setting with minimal passing traffic—ideal for families, professionals, or those seeking a more tranquil environment.

The accommodation is thoughtfully laid out and comprises a welcoming entrance hallway, a bright and comfortable living room, and a modern kitchen/diner—perfect for both everyday living and entertaining. There is also a convenient utility cupboard and a ground floor W/C.

Upstairs, the property offers three well-proportioned bedrooms, including a spacious principal bedroom with its own en-suite shower room, alongside a contemporary family bathroom serving the remaining bedrooms.

Externally, the home continues to impress, benefiting from a driveway providing off-road parking, a single garage, and a well-maintained rear garden—ideal for outdoor relaxation and entertaining.

This is a fantastic opportunity to acquire a turnkey home in a highly desirable location, ready for immediate occupation.

If you'd like, I can also tailor it for Rightmove, brochure style, or make it sound more luxury-focused or more



Additional Information

Tenure: We understand that the property for sale is Freehold

Local Authority: Wychavon District Council

Council Tax Band: We understand that the Council Tax Band for the property is Band D

EPC Rating B

Estate charges apply

DISCLAIMER

Whilst we make enquiries with the Seller to ensure the information provided is accurate, Christian Lewis makes no representations or warranties of any kind with respect to the statements contained in the particulars which should not be relied upon as representations of fact. All representations contained in the particulars are based on details supplied by the Seller.

Your Conveyancer is legally responsible for ensuring any purchase agreement fully protects your position.

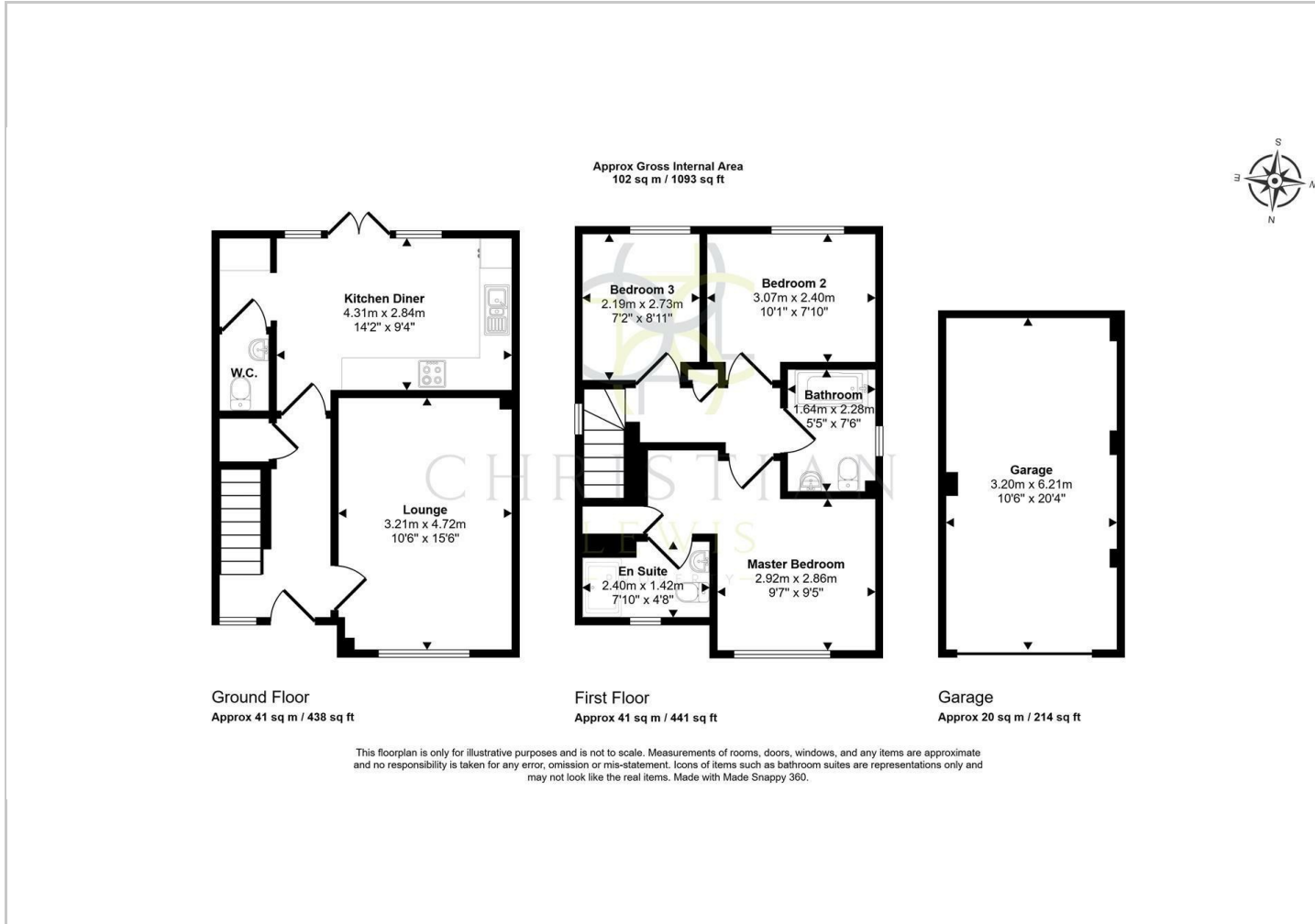
Please inform us if you become aware of any information being inaccurate.



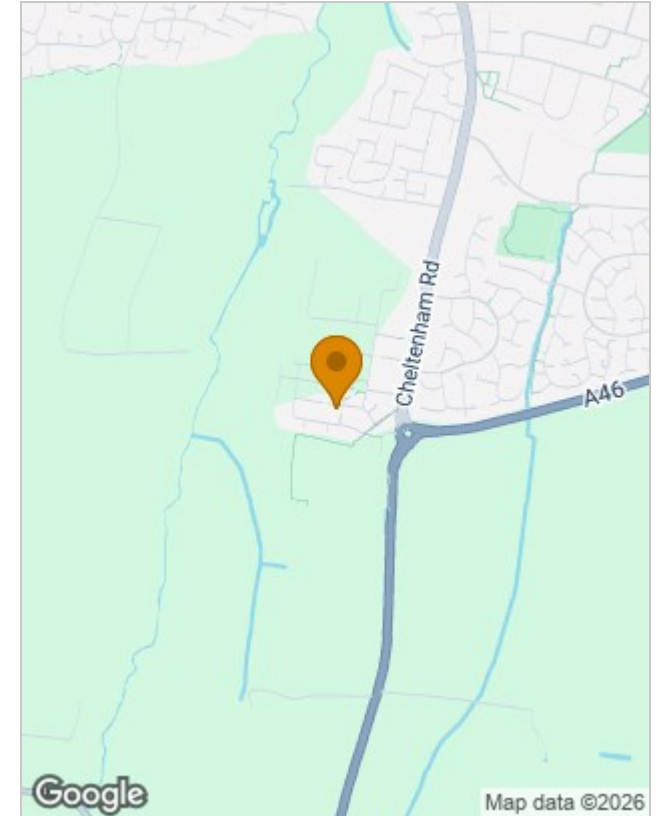




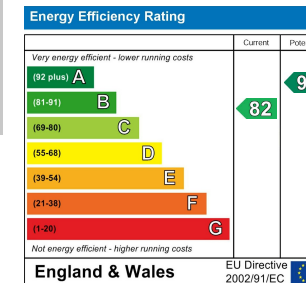
Floor Plans



Location Map



Energy Performance Graph



Viewing

Please contact our Evesham Office on 01386 442929 if you wish to arrange a viewing appointment for this property or require further information.

The particulars are set out as a general outline only for the guidance of intended purchasers or lessees, and do not constitute, any part of a contract. Nothing in these particulars shall be deemed to be a statement that the property is in good structural condition or otherwise nor that any of the services, appliances, equipment or facilities are in good working order. Purchasers should satisfy themselves of this prior to purchasing.