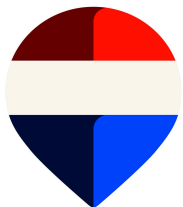




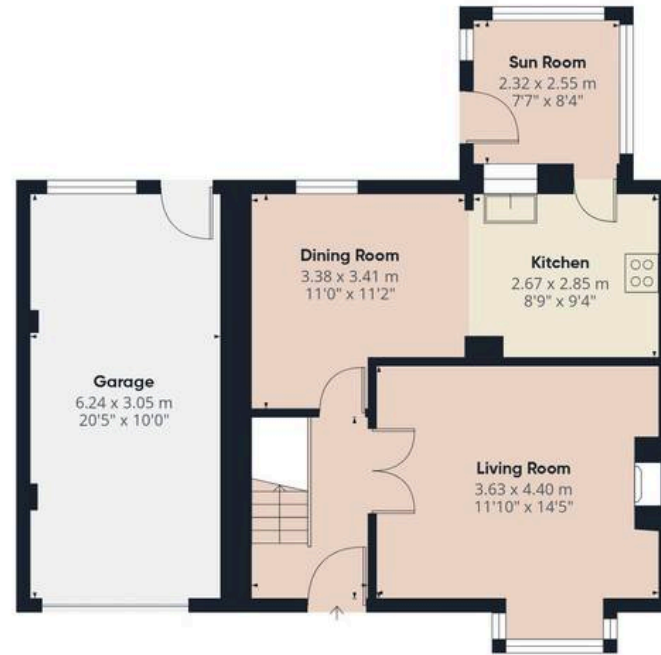
24 Darmeid Place

Shotts

A rare opportunity to acquire a highly adaptable home with outstanding potential, 24 Darmeid Place offers buyers the chance to create a bespoke living space in a sought-after village setting, with beautiful open countryside views adding to its appeal. Originally designed as a three-bedroom property and currently configured as a spacious two-bedroom home, this property has already been adapted to enhance open-plan living, with a bright kitchen and dining area forming the heart of the home. This layout not only works exceptionally well in its current form but also offers clear potential for further enhancement, including the creation of a full open-plan kitchen, dining and living space to suit modern family living. The accommodation throughout is generously proportioned and filled with natural light, with the added benefit of gas central heating, double glazing, and attractive open countryside outlooks enhancing both comfort and efficiency. The existing layout will appeal to a wide range of buyers, particularly those looking to add value, personalise a home, or adapt the space as their needs evolve over time. The option to easily reinstate a third bedroom further strengthens the long-term versatility of the property. Externally, the home continues to impress. The well-maintained garden enjoys excellent kerb appeal and provides a welcoming first impression, while also offering a private and attractive outdoor space ideal for relaxing or entertaining. To the rear, a useful porch provides additional practical space, ideal for coats, shoes, or utility use. A detached garage and two further outbuildings add exceptional value, offering extensive storage, workshop potential, or flexible space for hobbies or home-based work. This is not simply a home, but an opportunity to shape and enhance a property in line with modern living expectations, all within a peaceful village setting surrounded by countryside views. Located within the popular village of Allanton, the property enjoys a peaceful residential setting while remaining exceptionally well connected for commuters. Allanton continues to be a sought-after location for buyers looking for value, flexibility and strong transport links in a village environment. Early viewing is strongly advised to fully appreciate the potential on offer.







Floor 0

Approximate total area⁽¹⁾

102.5 m²

1104 ft²



Floor 1



(1) Excluding balconies and terraces

Reduced headroom

----- Below 1.5 m/5 ft

Calculations reference the RICS IPMS 3C standard. Measurements are approximate and not to scale. This floor plan is intended for illustration only.

GIRAFFE360



RE/MAX Clydesdale – Carluke

Remax Clydesdale, 31A High Street – ML8 4AL

01555 752444

carluke@remax-scotland.homes

www.remax-scotland.homes/estate-agents/clydesdale

These particulars are prepared by us on the basis of information provided by our clients. We have not tested the electrical system, appliances or heating system. All sizes are recorded by laser to give an indicative, approximate size only. Prospective purchasers should make their own enquiries, no warranty is given or implied. This schedule is not intended to, and does not form any contract. Anti-Money Laundering Regulations – Purchasers will be asked to produce identification documentation at a later stage and we would ask for your co-operation in order that there will be no delay in agreeing the sale. NOTING INTEREST If you are interested in this property please ask your solicitor to notify us. This is referred to as "noting interest" and will ensure that you are informed of any