



## Clifton Road, TW11

£769,950

A wonderful three bedroom semi detached Victorian house located in this popular location. This homes offers spacious accommodation throughout with a lovely rear garden and it is a must view.

Clifton Road is located between Church Road and Elmtree Road. Ideal for transport links by train or by bus and easy access into Teddington High Street. Bushy Park and The River Thames are close by. Ideally located for excellent schools.

### Features

- Three Bedrooms
- Well Presented
- Semi-Detached
- Side Access
- Excellent Location
- Close To Schools



## Clifton Road, TW11

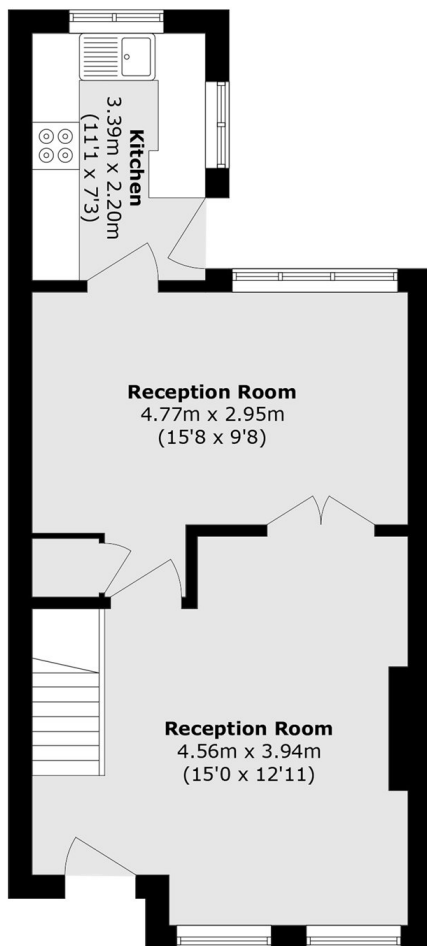
The welcoming front reception room opens onto the adjoining dining room which then flows seamlessly into a stylish contemporary kitchen. Creating a warm and sociable space ideal for both everyday living and entertaining.

The first floor offers three well-proportioned double bedrooms, all filled with natural light, alongside a modern shower room finished to a high standard.

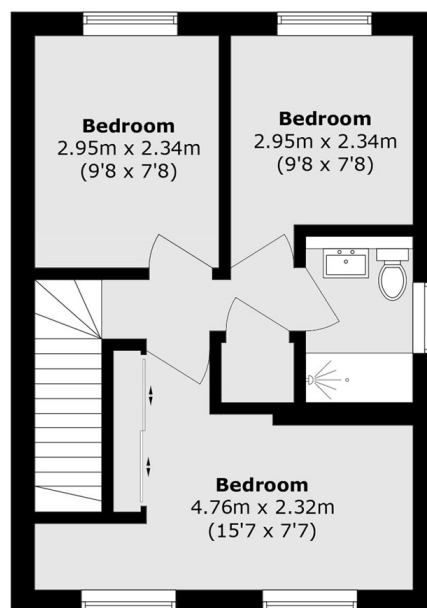
The walled garden to the rear is the perfect space to relax in over the summer and easy to maintain with side access.



# Clifton Road, Teddington, TW11



**Ground Floor**



**First Floor**

Total area (approx.): 78.2 sq. m (841.7 sq. ft)