



Morning Lane, E9

£3,950 Per week

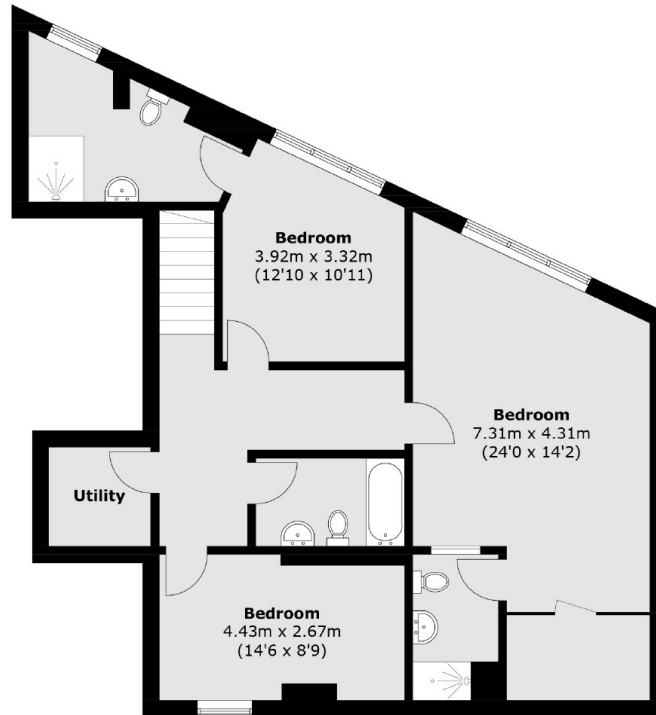
A stunning duplex apartment on Morning Lane. This well presented property comes with three double bedrooms, three bathrooms, large open reception with a fully fitted kitchen and comes furnished.

Great location within easy reach of Hackney Central, Victoria Park, Broadway market and Dalston for all local shops, bars and restaurants.

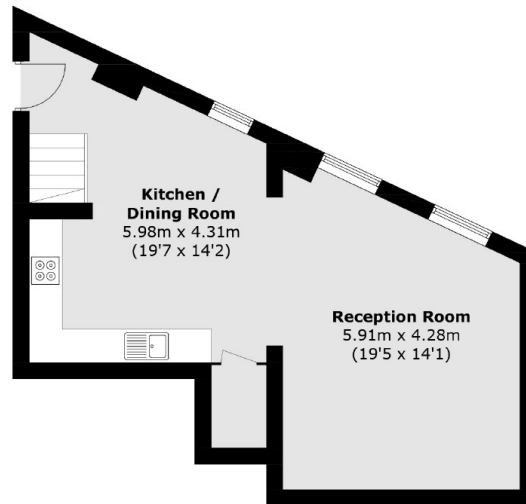
Features

- Three Double Bedrooms
- Three Bathrooms
- Open Plan
- Duplex Apartment
- Wooden flooring
- Furnished

Morning Lane, London, E9



First Floor



Ground Floor

Total area (approx.): 136.1 sq. m (1,464.9 sq. ft)