



**A SPACIOUS THREE BEDROOM GROUND FLOOR MAISONETTE FULL OF CHARACTER**

Chester Road, Northwood, Middlesex, HA6 1BG

**ROBSONS**



Chester Road, Northwood, Middlesex, HA6 1BG

**GROUND FLOOR MAISONETTE • THREE BEDROOMS • OVER 1,400 SQFT • LIVING ROOM • KITCHEN/DINING ROOM • CONSERVATORY • TWO BATHROOMS • OFF-STREET PARKING • REAR GARDEN**

### Description

This well-presented ground floor three-bedroom maisonette offers over 1,400 sq ft of well-proportioned accommodation.

The property features a spacious reception room to the front, a well-appointed kitchen/dining room through to a bright conservatory with views and access to the garden. There are three good-sized bedrooms, including one benefiting from its own shower room, as well as a separate family bathroom.

Further advantages include direct access to a private garden and off-street parking for one vehicle.

This substantial maisonette combines flexible living space with practical features, making it a highly attractive home.







Northwood provides a range of shopping facilities including Waitrose supermarket, a variety of restaurants and other amenities with the Metropolitan Line station providing access to Baker Street and the City. There is a plethora of state and private schooling together with a wide choice of recreational facilities, which include golf courses and fitness centres. The M1, M40 and M25 motorways are also accessible.

NB this property is situated within the proximity of the ULEZ, if your vehicle does not comply charges may apply.

### Additional Information

Tenure: Leasehold

Lease Length: 125 years from 29 March 1996

Service Charge: £600 p/a (includes insurance)

Ground Rent: £75 p/a

Local Authority: London Borough of Hillingdon

Council Tax Band: D

Energy Efficiency Rating: D

For additional information, please refer to [www.robsonswb.com](http://www.robsonswb.com) or call us on: 01923 835355.





Approximate Gross Internal Area = 131.7 sq m / 1,418 sq ft

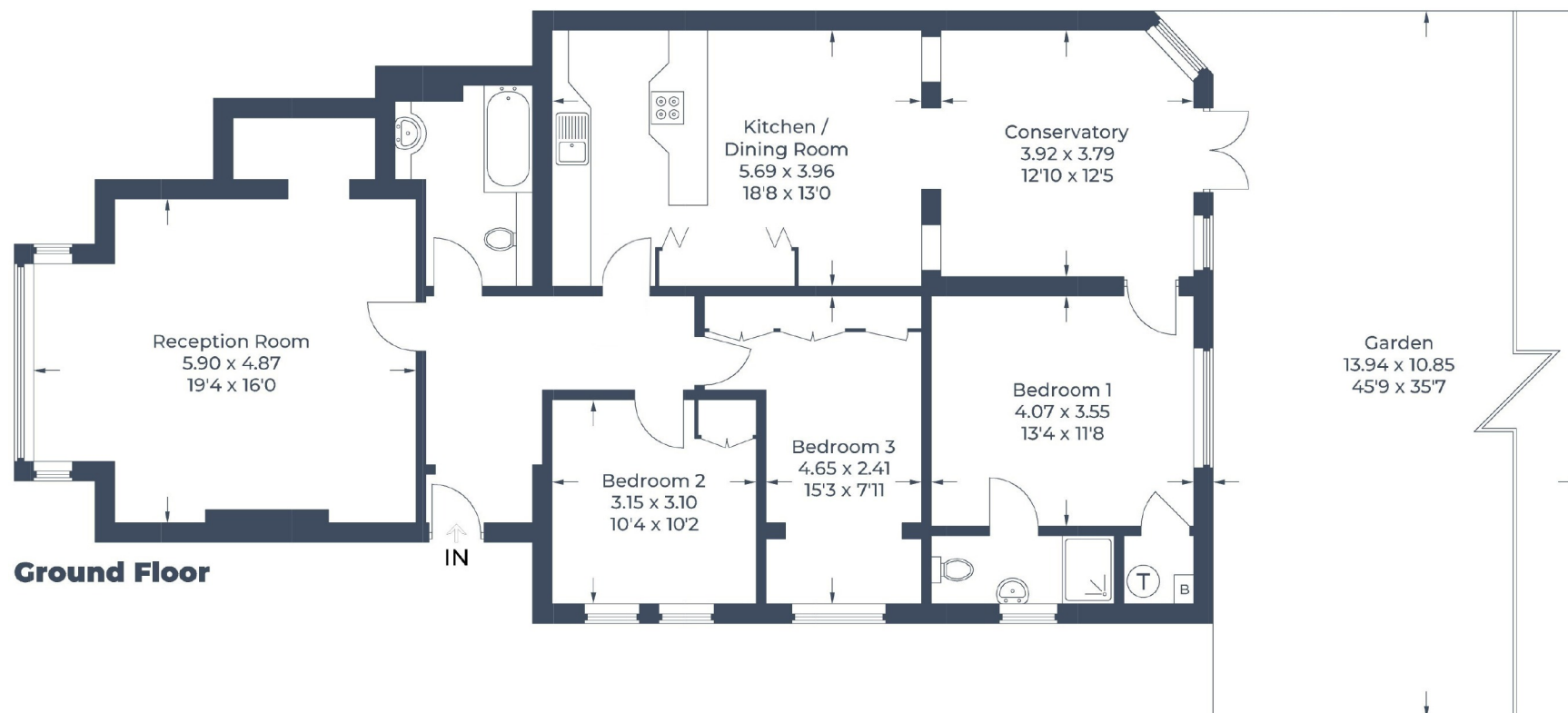


Illustration for identification purposes only,  
measurements are approximate, not to scale.

© CJ Property Marketing

**ROBSONS**

7 Clive Parade, Northwood, HA6 2QF  
Tel: 01923 835355 Email: northwood@robsonswb.com  
[www.robsonswb.com](http://www.robsonswb.com)

SCAN TO VISIT



OUR WEBSITE

Important notice: Robsons, their clients and any joint agents give notice that 1: They are not authorised to make or give any representations or warranties in relation to the property either here or elsewhere, either on their own behalf or on behalf of their client or otherwise. They assume no responsibility for any statement that may be made in these particulars. These particulars do not form part of any offer or contract and must not be relied upon as statements or representations of fact. 2: Any areas, measurements or distances are approximate. Plot sizes and dimensions are taken from Promap and are approximate. The text, photographs and plans are for guidance only and are not necessarily comprehensive. It should not be assumed that the property has all necessary planning, building regulation or other consents and Robsons have not tested any services, equipment or facilities. Purchasers must satisfy themselves by inspection or otherwise.