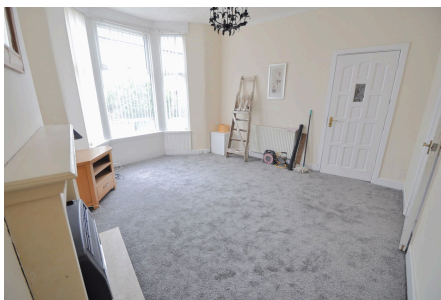


## Seafield Road, New Ferry

£465PCM (Deposit: £1)

1 bed 1 bath 1 kitchen



Tax Band: Furnished: Unfurnished Council Tax Band A EPC Rating D

Ready for immediate occupation this spacious one bedroom ground floor flat is an ideal home for a single person or couple! A short stroll to New Ferry Promenade with beautiful views over to Liverpool skyline. Located close to local amenities, shops and near to good bus links to Liverpool, Bromborough and beyond. Briefly comprising of communal entrance, lounge, double bedroom, inner hallway, kitchen and bathroom with separate WC. Exterior: private rear yard, a perfect space to enjoy those sunnier months! Complete with gas central heating and double glazing. Call today to arrange a viewing; be quick!

## Key Features

- One Bedroom
- Available Now
- Council Tax Band A
- 
- 
- Ground Floor Flat
- EPC Rating D
- One Week Holding Deposit Payable
- 
- 

