

Evora Road, Wymondham, NR18

£400,000

4 3 2



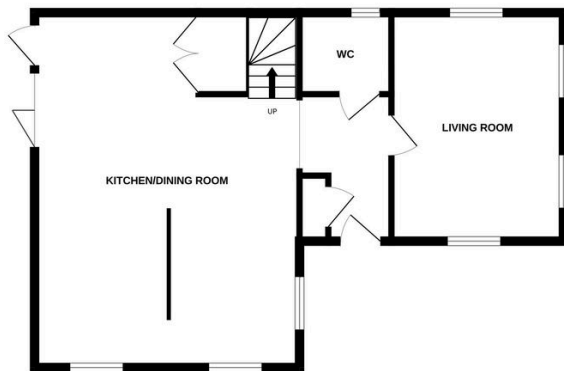
Moneyproperties bring to market this immaculately presented four-bedroom detached house ideally located within walking distance to the train station and town centre. Set in a quiet cul de sac the property comprises of an entrance hall, bright and airy living room, 22ft open plan kitchen/diner with its own reception area and downstairs wc. To the upstairs comes four well-proportioned bedrooms, three with built in wardrobes and an ensuite to bedroom one along with a family bathroom. Outside the property enjoys a 25ft enclosed garden, single garage, and off-road parking. This stylish and modern home must be viewed to fully appreciate.

Tenure: Freehold EPC: C Council Tax: E

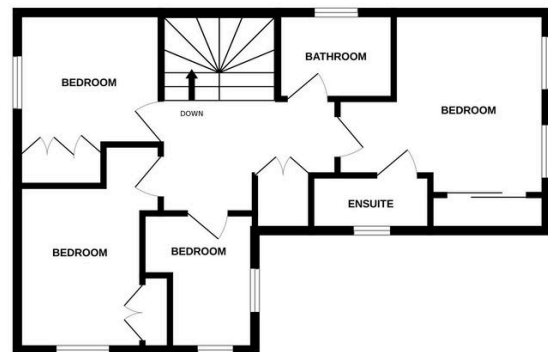
Key Features

- Immaculately presented four-bedroom detached house
- Within walking distance to the town centre and train station for commuting
- Bright and airy living room
- Ensuite to bedroom one
- Single garage with off-road parking
- Located in a quiet cul de sac
- 22ft open plan kitchen/dining room with a separate reception area
- Four well-proportioned bedrooms, three with built in wardrobes
- 25ft enclosed garden with a patio area
- See our full online listing for further details including flood risk, broadband speed and other material information.

GROUND FLOOR



1ST FLOOR



Whilst every attempt has been made to ensure the accuracy of the floorplan contained here, measurements of doors, windows, rooms and any other items are approximate and no responsibility is taken for any error, omission or mis-statement. This plan is for illustrative purposes only and should be used as such by any prospective purchaser. The services, systems and appliances shown have not been tested and no guarantee as to their operability or efficiency can be given.
Made with Metropix ©2025