

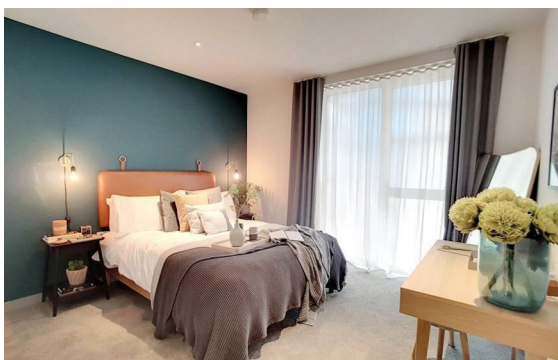
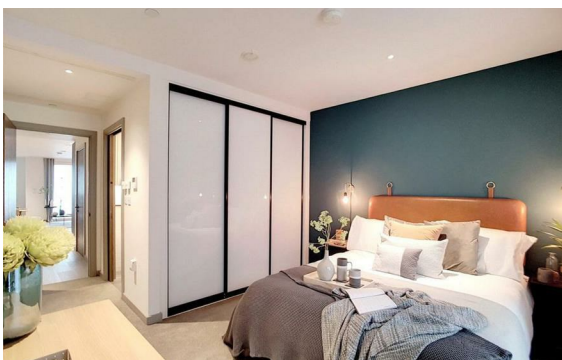
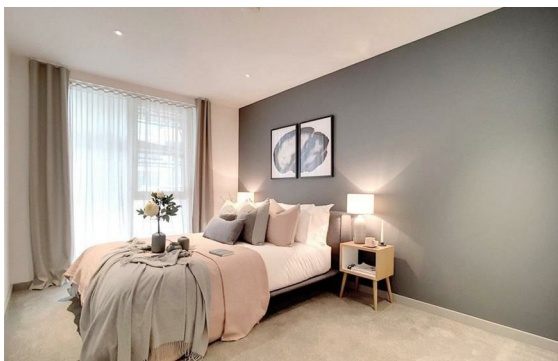
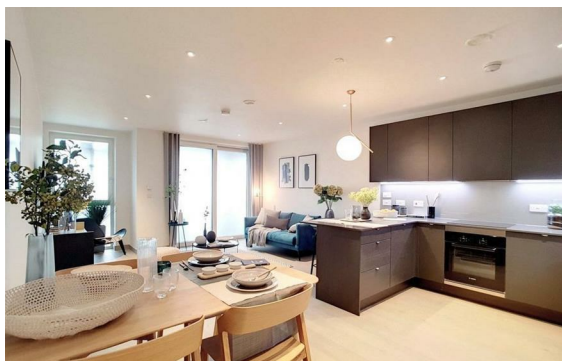


[Praed Street, Paddington, London, W2](#)

Rent £1,630 Per Month

3 Bed | 2 Bath | 1 Reception

Please call us on 020 7724 2233 or email us info@newingtonstates.com to book a viewing.



A contemporary three-bedroom apartment offering bright interiors, modern finishes, and a well-balanced layout in a sought-after location.

The property features a spacious reception room with access to a private balcony overlooking the water, a modern fully fitted kitchen, and three well-proportioned bedrooms. The principal bedroom benefits from an en-suite bathroom, while a separate shower room serves the remaining bedrooms. The layout is practical and versatile, ideal for families or sharers. Residents also benefit from concierge service, CCTV, and optional parking, providing a secure and convenient living environment.

EPC rating: C

Energy Efficiency Rating: C

Agents Note: Whilst every care has been taken to prepare these particulars, they are for guidance purposes only. All measurements are approximate and are for general guidance purposes only and whilst every care has been taken to ensure their accuracy, they should not be relied upon and potential buyers/tenants are advised to recheck the measurements.



60 Upper Montagu Street

London

W1H 1SN

020 7724 2233

info@newingtonestates.com

<http://www.newingtonestates.com>