



Fox Hill, SE19 | £2,000,000

020 8702 9333

crystalpalace@pedderproperty.com

pedder
We live local



In General

- Six bedroom semi-detached house
- Forming one of the most sought after roads in the area
- No onward chain
- 135ft mature rear garden
- Three and a half bathrooms
- Off street parking for two cars
- Fabulous entertaining spaces
- Close to central Crystal Palace
- Surrounded by lush greenery
- 2275 sq ft / 211.4 sq m

In Detail

Set on one of Crystal Palace's most coveted residential streets, this elegant semi-detached early Victorian house combines grand Georgian townhouse proportions with beautifully balanced contemporary living. Arranged across four floors and extending into a remarkable 135 ft garden, the house has been configured to maximise natural light, flow and connection to the outdoors.

The ground floor is devoted entirely to living and entertaining spaces, creating a wonderful sense of openness and ease. At its centre is an extended kitchen and dining room, where French doors frame long views of the garden and draw light deep into the house throughout the day. The sequence of spaces feels both expansive and intimate, equally suited to large gatherings and quieter everyday routines.

The garden itself is exceptional — mature, secluded and unusually long for the area — offering a series of distinct spaces for dining, playing and retreating, with a feeling of calm that belies the house's proximity to central London.

Upstairs, four generous bedrooms are arranged across the upper floors, each with a distinct outlook and excellent natural light. The main bedroom includes an en-suite shower room, while a family bathroom serves the remaining rooms.

The lower ground floor introduces a more flexible layer of living. With two substantial rooms and an additional shower room, the space could adapt easily over time: guest accommodation, a studio, workspace, playroom or semi-independent suite for older children or guests.

Fox Hill is among Crystal Palace's most architecturally significant streets, lined with handsome period houses and characterised by its quiet, leafy atmosphere. The street was painted by Camille Pissarro in 1870 — the house itself appearing in the work — now held by The National Gallery.

The house is a short walk from the independent shops and restaurants of the Crystal Palace Triangle, as well as Crystal Palace Station for central and East London.

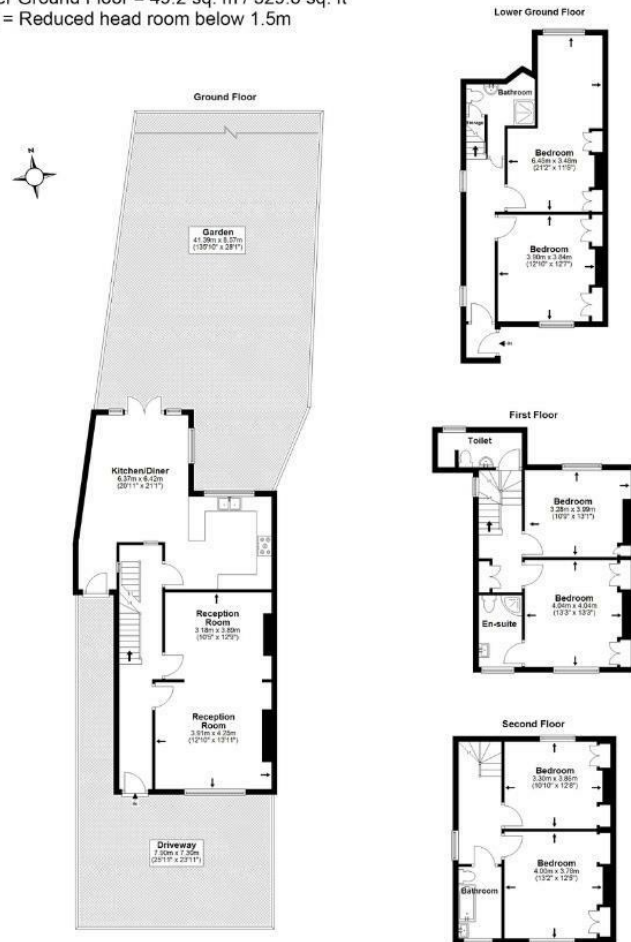
EPC: E | Council Tax Band: G



Floorplan

Fox Hill, SE19

Total* = 211.4 sq. m / 2275.3 sq. ft
 Second Floor = 40.6 sq. m / 436.6 sq. ft
 First Floor = 46.5 sq. m / 500.7 sq. ft
 Ground Floor = 75.1 sq. m / 808.3 sq. ft
 Lower Ground Floor = 49.2 sq. m / 529.8 sq. ft
 ☐ = Reduced head room below 1.5m



*All measurements are approximate and do not include eaves space. The plans are for representation purposes only as defined by RICS - 'Code of Measurement Practice'. The plans are not to scale. Please personally check all sizes, dimensions, shapes and compass bearings before making any decisions reliant upon them. Copyright The Pedder Group © 2026.

Energy Efficiency Rating	
Current	Potential
Very energy efficient - lower running costs	
102 plus) A	
81-101) B	
69-80) C	
55-68) D	
39-54) E	53
21-38) F	
1-20) G	
Not energy efficient - higher running costs	
76	
England & Wales	
EU Directive 2002/91/EC	

Pedder Property Ltd trading as Pedder for themselves and for the vendor/landlord of this property whose agents they are, give notice that (1) these particulars do not constitute any part of an offer or contract, (2) all statements contained within these particulars are made without responsibility on the part of Pedder or the vendor/landlord, (3) whilst made in good faith, none of the statements contained within these particulars are to be relied upon as a statement of representation or fact, (4) any intending purchaser/tenant must satisfy him/herself by inspection or otherwise as to the correctness of each of the statements contained within these particulars, (5) the vendor/landlord does not make or give either Pedder or any person in their employment any authority to make or give representation or warranty whatsoever in relation to this property.