



Connells

Meadhook Drive
Barton-Le-Clay Bedford

Meadhook Drive Barton-Le-Clay Bedford MK45 4RH

for sale offers in excess of
£350,000



Property Description

This three bedroom semi-detached freehold house makes the ideal first time purchase. Located at the end of peaceful cul-de-sac with benefits including; cloakroom, en-suite, private driveway and garage. It is also being offered to the market chain-free!

Briefly comprises hallway, cloakroom, Lounge open into dining room and kitchen downstairs. Upstairs are three bedrooms with en-suite to master and family bathroom located off the landing.

The rear is laid mostly to lawn and has a gate to the front.

The front holds a drive leading to a garage.

Barton-le-Clay is a large village in central Bedfordshire with local amenities including; Co-op Food, Passage to India restaurant, the pudding shop as well as a public houses'.

Local schools incorporate; Arnold Academy, Ramsey Manor Lower School and Orchard School & Nursery independent school.

Harlington Station, on the Thameslink line is just over 3 miles from the residence.

The village offers beautiful landscape with Barton Springs, which is part of the Barton Hills National Nature Reserve, allowing scenic walks with rare wildlife.

Call now to view!

Entrance Hall

Double glazed frosted door to front aspect. Stairs leading to first floor. Laminate flooring.

Cloakroom

Double glazed frosted window to side aspect. Suite comprising low level wc and wash hand basin. Tiled. Radiator.

Lounge

Double glazed patio door to rear aspect. Two radiators. Under stairs storage cupboard. Laminate flooring.

Dining Room

Double glazed window to rear aspect. Laminate flooring. Radiator.

Kitchen

Double glazed window to front aspect. Fitted kitchen comprising a range of wall and base units with work surfaces over incorporating a sink and drainer unit. Integrated gas hob and oven with fan over. Plumbing for a washing machine. Space for a fridge/freezer. Part tiled. Radiator.

First Floor Landing

Double glazed window to front aspect. Airing cupboard housing boiler. Loft access. Radiator.

Bedroom One

Double glazed window to rear aspect. Built in wardrobes. Radiator.

En Suite

Double glazed frosted window to rear aspect. Suite comprising shower cubicle, wash hand basin and low level wc. Part tiled. Tiled flooring. Extractor fan. Radiator.

Bedroom Two

Double glazed window to rear aspect. Radiator.



Bedroom Three

Double glazed window to front aspect.
Radiator.

Bathroom

Double glazed frosted window to front aspect.
Suite comprising bath, wash hand basin and
low level wc. Extractor fan. Part tiled.
Radiator.

Front Garden

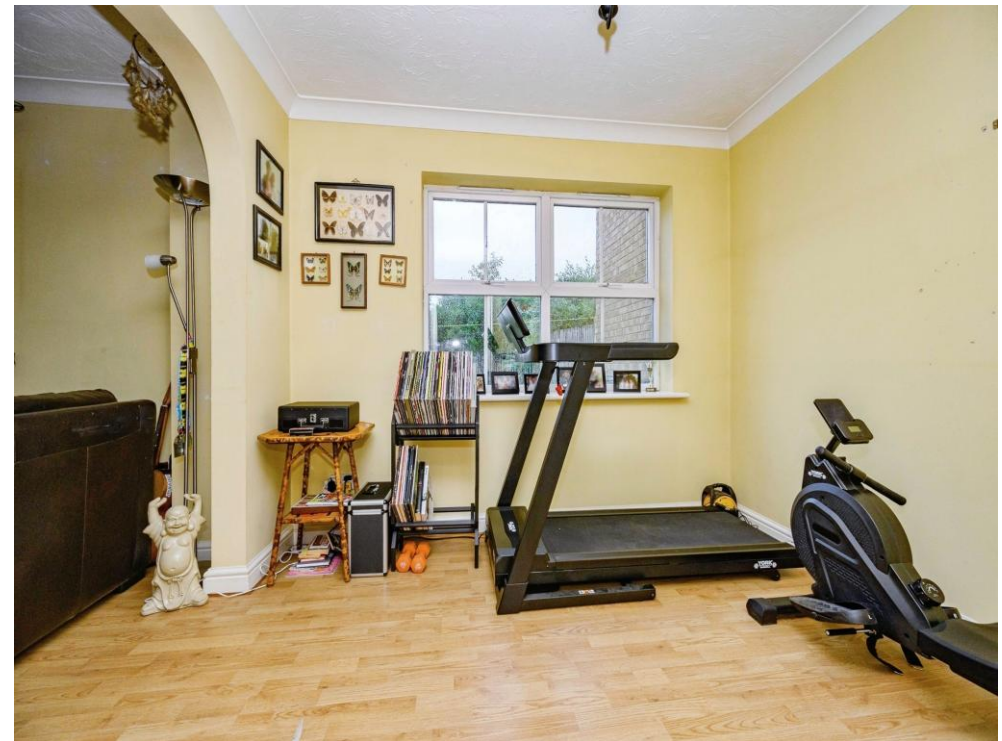
Driveway.

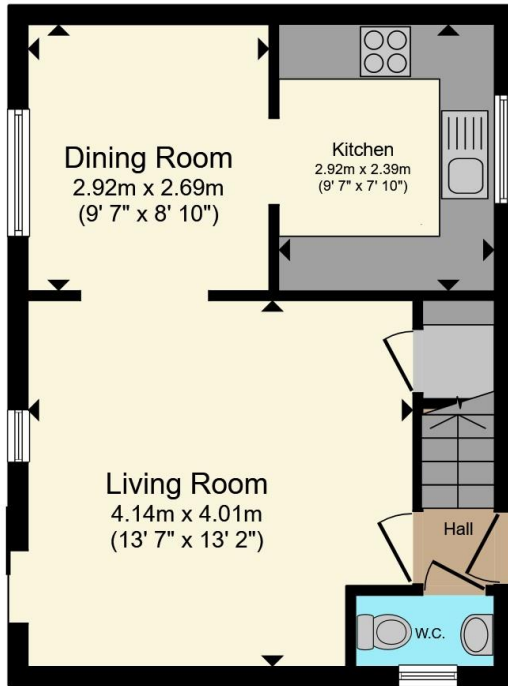
Rear Garden

Laid to lawn with a patio area. Shrubs and
trees. Gate to side aspect.

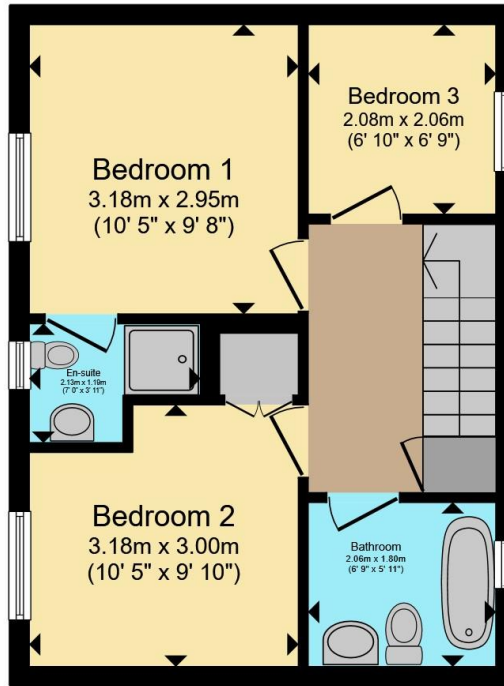
Garage

Up and over door.





Ground Floor



First Floor

Total floor area 71.8 m² (772 sq.ft.) approx

This floor plan is for illustrative purposes only. It is not drawn to scale. Any measurements, floor areas (including any total floor area), openings and orientation are approximate. No details are guaranteed, they cannot be relied upon for any purpose and they do not form part of any agreement. No liability is taken for any error, omission or misstatement. A party must rely upon its own inspection(s). Powered by www.propertybox.io



To view this property please contact Connells on

T 01582 592332
E lutonnorth@connells.co.uk

1A Riddy Lane
 LUTON LU3 2AD

EPC Rating: C Council Tax
 Band: D

view this property online connells.co.uk/Property/LUN103932

Tenure: Freehold



1. MONEY LAUNDERING REGULATIONS Intending purchasers will be asked to produce identification documentation at a later stage and we would ask for your co-operation in order that there will be no delay in agreeing the sale. 2. These particulars do not constitute part or all of an offer or contract. 3. The measurements indicated are supplied for guidance only and as such must be considered incorrect. Potential buyers are advised to recheck measurements before committing to any expense. 4. We have not tested any apparatus, equipment, fixtures, fittings or services and it is in the buyers interest to check the working condition of any appliances.

Connells Residential is registered in England and Wales under company number 1489613, Registered Office is Cumbria House, 16-20 Hockliffe Street, Leighton Buzzard, Bedfordshire, LU7 1GN. VAT Registration Number is 500 2481 05.

See all our properties at www.connells.co.uk | www.rightmove.co.uk | www.zoopla.co.uk

Property Ref: LUN103932 - 0002