



# Lindal Crescent, Enfield

£725,000

**Havilands**

the advantage of experience



- Three-bedroom detached bungalow with off-street parking in desirable Oakwood location
- 1,027 sq. ft. of versatile living space
- Master bedroom with en-suite
- Spacious lounge and separate dining room, modern fitted kitchen and family bathroom
- Underfloor heating
- Boarded Loft
- Approx. 50' rear garden, ideal for entertaining
- Within catchment of top-rated local schools
- Walking distance to Grange Park Station & close to Oakwood Underground (Piccadilly)
- Near Oakwood & Grovelands Parks, shops, cafés, and local amenities



Havilands are delighted to present For Sale this charming three-bedroom detached bungalow on Lindal Crescent, EN2. Situated in the ever-popular Oakwood area, this attractive home offers 1,027 sq. ft. of well-balanced living space. Inside, you'll find three bedrooms including a master with en-suite, a bright lounge, separate dining room, modern kitchen, and a family bathroom. Outside, the property benefits from underfloor heating, off-street parking, a fully boarded loft and a beautifully maintained rear garden extending to approximately 50 feet — perfect for relaxing or entertaining.

Ideally positioned for families, the home falls within the catchment of highly regarded schools including Merryhills, Eversley, Grange Park Primary, and Highlands School. Local amenities are close by, with Sainsbury's (Highlands Village) within easy reach, and Waitrose and Asda just a short drive away.

For commuters, Grange Park Mainline Station is within walking distance, providing direct links to Moorgate (approx. 30 mins) with connections to the Overground, Underground and Thameslink networks. Oakwood Underground Station (Piccadilly Line) is also around a 5-minute drive, offering an alternative, convenient route into London.

Residents can also enjoy the wide open spaces of Oakwood and Grovelands Parks, both nearby, offering scenic walks, community events and peaceful green surroundings — the perfect balance of suburban calm and city accessibility.

A wonderful opportunity to secure a well-located home with space, comfort and potential — viewing is highly recommended.

Property Information:

Tenure: Freehold

Local Authority: Enfield Borough

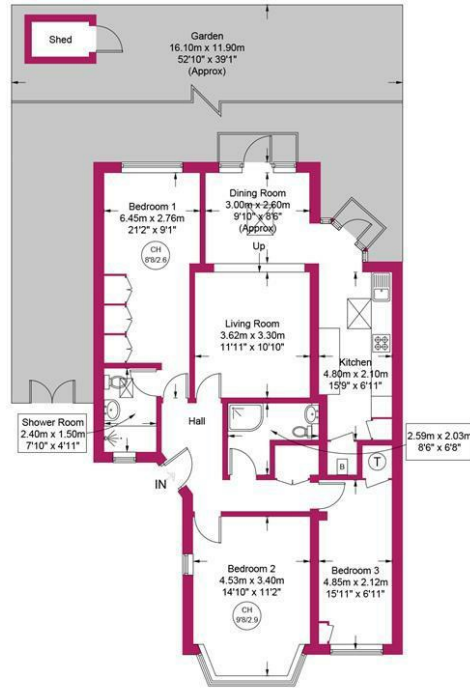
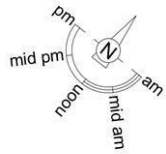
Council Tax: Band E (2026/2027 £2,771.60)

EPC Rating: Current (TBC); Potential (TBC)

For more images of this property please visit [havilands.co.uk](https://havilands.co.uk)

Lindal Crescent, EN2

Approximate Gross Internal Area = 1027 sq ft / 95.4 sq m



Energy Efficiency Rating		
	Current	Potential
<i>Very energy efficient - lower running costs</i>		
(92 plus) <b>A</b>		
(81-91) <b>B</b>		
(69-80) <b>C</b>		
(55-68) <b>D</b>	<b>67</b>	<b>79</b>
(39-54) <b>E</b>		
(21-38) <b>F</b>		
(1-20) <b>G</b>		
<i>Not energy efficient - higher running costs</i>		
<b>England &amp; Wales</b>	EU Directive 2002/91/EC	



This plan is for layout guidance only and is not drawn to scale unless stated. All dimensions, including windows, doors, and the Total Gross Internal Area (GIA), are approximate. For precise measurements, please consult a qualified architect or surveyor before making any decisions based on this plan.



havilands | 020 8886 6262  
 come by and meet the team  
 30 The Green, Winchmore Hill, London, N21 1AY



the advantage of experience