



Guide Price
£450,000

Freehold

3x  1x  2x 

**The Glade, Shirley,
Croydon, Surrey, CR0**

OVER 60?

Secure this property
for up to **59% less!**

cubitt & west
Helping you move forwards



Main features

- **Spacious dual-aspect master bedroom**
- **Downstairs bathroom - ideal for young families**
- **Conservatory with garden access**
- **Excellent local schools and amenities**
- **Great transport links to local towns, including Beckenham, Bromley and Croydon**

Accommodation

GROUND FLOOR

Porch
Hall
Bathroom: 8'0 x 5'6 (2.44m x 1.68m)
Kitchen: 11'8 x 7'4 (3.56m x 2.24m)
Lounge: 15'8 x 9'3 (4.78m x 2.82m)
Dining Area: 11'1 x 7'6 (3.38m x 2.29m)
Conservatory: 10'6 x 10'0 (3.20m x 3.05m)

FIRST FLOOR

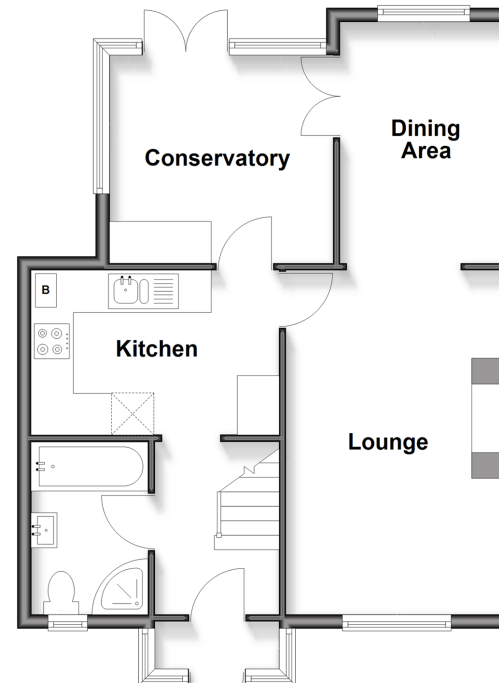
Landing
Bedroom 1: 10'5 x 9'11 (3.18m x 3.02m)
Dressing Room : 10'5 x 6'5 (3.18m x 1.96m)
Bedroom 2: 14'0 x 7'6 (4.27m x 2.29m)
Bedroom 3: 8'4 x 7'6 (2.54m x 2.29m)

OUTSIDE

Front Garden
Rear Garden

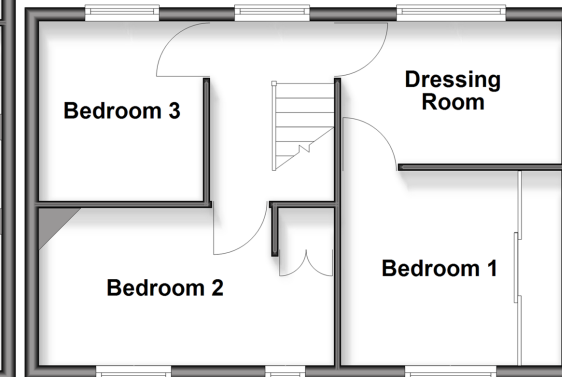
Ground Floor

Approx. 53.2 sq. metres (572.3 sq. feet)



First Floor

Approx. 36.8 sq. metres (395.9 sq. feet)



Call Shirley - 020 8654 3037 ■ cubittandwest.co.uk

■ Legal advice should be taken to verify fixtures/fittings, planning, alterations and/or lease details
■ Through a Homewise Home For Life Plan people aged 60+ can secure this property for up to 50% less, by purchasing a Lifetime Lease

■ Appliances & services are untested, dimensions are approximate and floor plans are not to scale