



Connells

Lowe Gardens
Aylesbury



Property Description

Step inside to a welcoming entrance hall that leads to a practical downstairs WC before opening into a bright and airy living room. Flooded with natural light from the striking front-aspect bay window, this space provides a warm and relaxing atmosphere. The separate dining room offers a fantastic setting for hosting, with direct access to the rear garden, while the contemporary kitchen is fitted with a range of wall and base units, an electric hob and oven, and space for additional appliances.

Upstairs, you'll find three well-sized bedrooms. The principal bedroom enjoys its own en-suite shower room, while the remaining rooms are served by a modern family bathroom complete with bath and mixer fittings.

Outside, the fully enclosed rear garden has been designed for low-maintenance enjoyment, featuring a mix of decking and artificial lawn—ideal for summer gatherings or unwinding outdoors. To the front, the property benefits from its own garage with parking directly ahead, providing everyday practicality.

This charming home is the perfect choice for families and professionals alike, combining space, style, and a sought-after setting in one of Aylesbury's most desirable residential neighbourhoods.

Agents Note

£13 monthly fee for garage

Entrance Hall

Laminate flooring underfoot

Cloakroom

WC

Wash hand basin

Part tiling

Lounge

15' x 10' 4" (4.57m x 3.15m)

Bay window to front

Laminate underfoot

Radiator

Dining Room

12' 4" x 10' 4" (3.76m x 3.15m)

Door to rear

Laminate flooring

Radiator

Kitchen

9' 6" x 7' 7" (2.90m x 2.31m)

Window to rear

Laminate flooring

Wall and base units

Electric hob and oven
Space for dishwasher, washing machine,
fridge/freezer
Part tiling

Landing

Carpet underfoot
Airing cupboard
Loft access

Bedroom One

12' 2" x 10' 5" (3.71m x 3.17m)
Window to front
Carpet underfoot
Radiator

En-Suite

WC
Wash hand basin
Shower cubicle
Radiator
Vinyl underfoot
Window to side

Bedroom Two

11' 7" x 10' 4" (3.53m x 3.15m)
Window to rear
Laminate underfoot
Radiator

Bedroom Three

8' 1" x 7' 7" (2.46m x 2.31m)
Window to rear
Laminate underfoot

Radiator

Bathroom

Window to front
Vinyl underfoot
WC
Wash hand basin
Bath/mixer
Part tiling

Rear Garden

Artificial lawn
Decking

Parking

Infront of garage

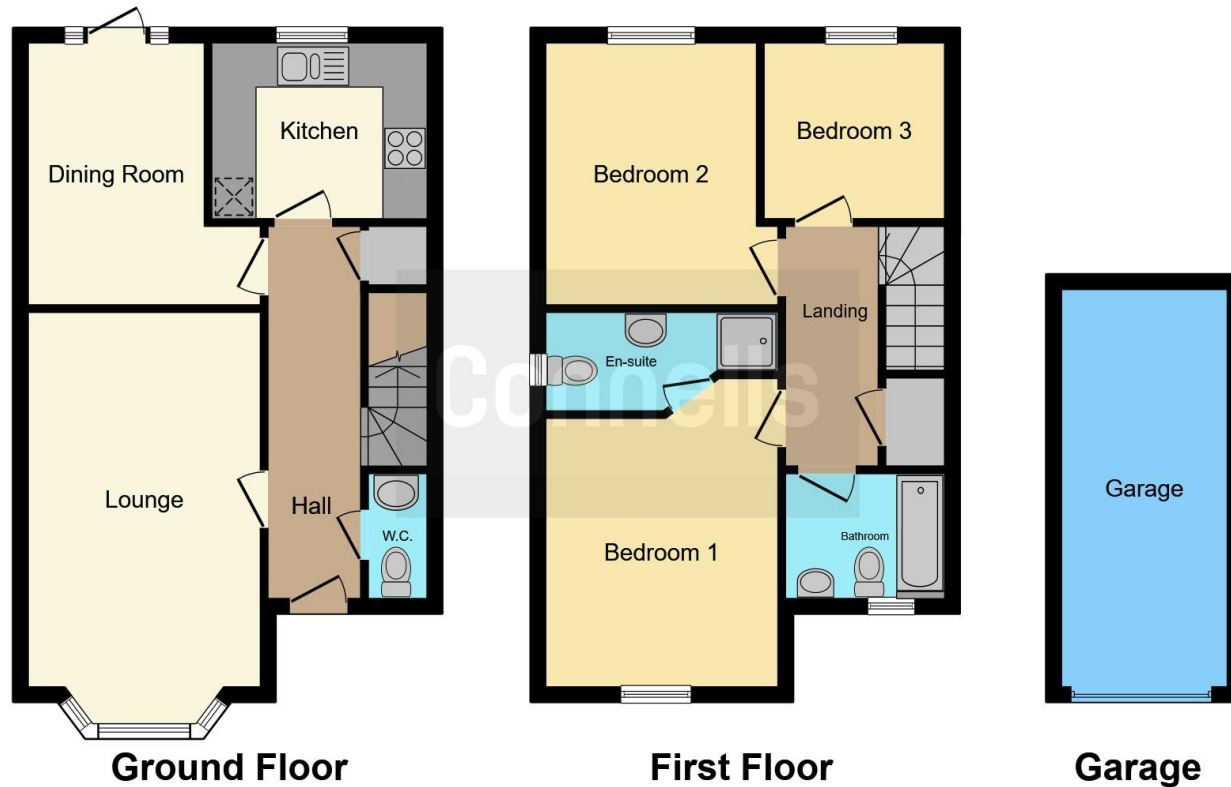
Garage

18' 6" x 7' 8" (5.64m x 2.34m)
Up and over door









This floor plan is for illustrative purposes only. It is not drawn to scale. Any measurements, floor areas (including any total floor area), openings and orientation are approximate. No details are guaranteed, they cannot be relied upon for any purpose and they do not form part of any agreement. No liability is taken for any error, omission or misstatement. A party must rely upon its own inspection(s). Powered by www.focalagent.com

To view this property please contact Connells on

T 01296 395 111
E aylesbury@connells.co.uk

2 Temple Street
 AYLESBURY HP20 2RH

EPC Rating: C Council Tax
 Band: C

Tenure: Freehold

view this property online connells.co.uk/Property/ALS312669



1. MONEY LAUNDERING REGULATIONS Intending purchasers will be asked to produce identification documentation at a later stage and we would ask for your co-operation in order that there will be no delay in agreeing the sale. 2. These particulars do not constitute part or all of an offer or contract. 3. The measurements indicated are supplied for guidance only and as such must be considered incorrect. Potential buyers are advised to recheck measurements before committing to any expense. 4. We have not tested any apparatus, equipment, fixtures, fittings or services and it is in the buyers interest to check the working condition of any appliances.

Connells Residential is registered in England and Wales under company number 1489613, Registered Office is Cumbria House, 16-20 Hockliffe Street, Leighton Buzzard, Bedfordshire, LU7 1GN. VAT Registration Number is 500 2481 05.

See all our properties at www.connells.co.uk | www.rightmove.co.uk | www.zoopla.co.uk

Property Ref: ALS312669 - 0005