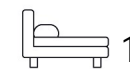




Living
made
better

Hoola Apartments
Royal Victoria Dock, E16 1UW



Asking Price £400,000

Hoola Apartments, Royal Victoria Dock, E16 1UW

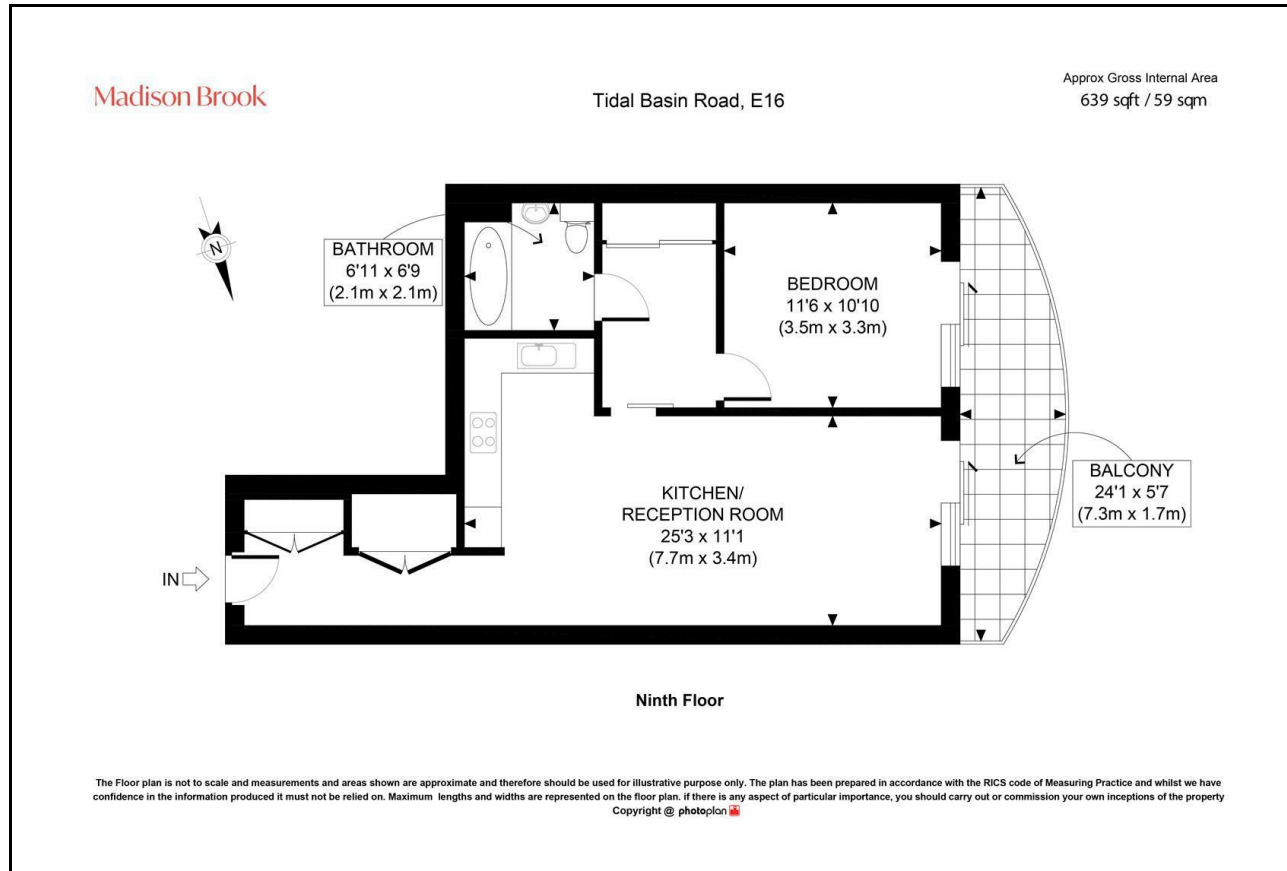
Madison Brook

Property Summary

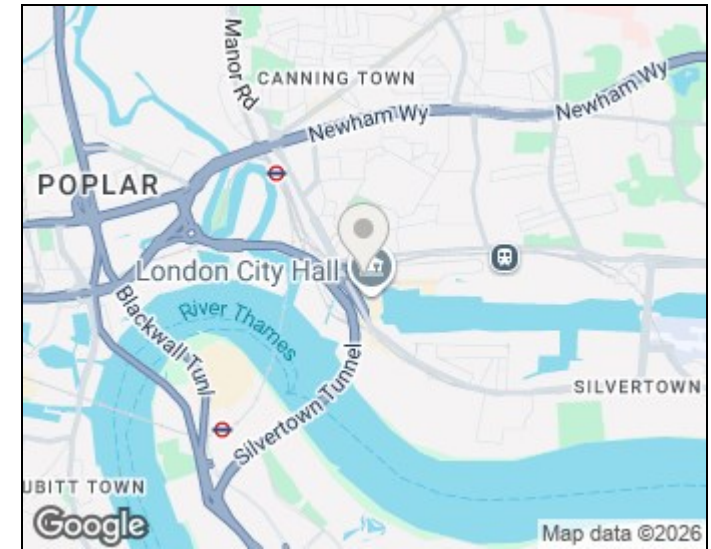
A beautifully presented ninth-floor one-bedroom apartment with a striking wraparound balcony offering impressive views across the Royal Docks and Emirates Cable Cars. The property features a spacious 25ft open-plan kitchen and reception room with floor-to-ceiling glazing, a generous double bedroom with built-in storage and a modern bathroom. Residents benefit from a 24-hour concierge and gym facilities, with Royal Victoria DLR, Canning Town Underground and the Elizabeth Line all within easy reach. Offered chain free.

Service Charge: £3,500 pa | Ground Rent: £400 pa | Lease Remaining: 990 years

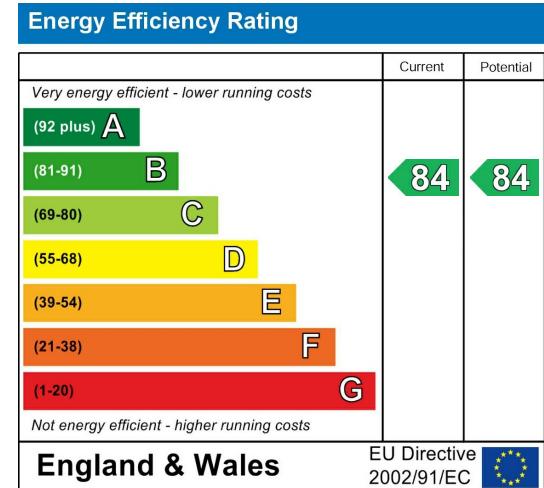
Floorplan



Area Map



Energy Efficiency Graph



These particulars, whilst believed to be accurate are set out as a general outline only for guidance and do not constitute any part of an offer or contract. Intending purchasers should not rely on them as statements of representation of fact, but must satisfy themselves by inspection or otherwise as to their accuracy. No person in this firm's employment has the authority to make or give any representation or warranty in respect of the property.

Unit B 20 Western Gateway, Royal Victoria
Dock, London, E16 1BS
Tel: 020 3946 6000 Email:
docklands@madisonbrook.com
<https://madisonbrook.com/>