

Ashtons



151 Mount Vale YO24 1DJ

£1,750 Per Month

2



2



1



C



This superb two bedroom four storey property is located on the corner of Mont Vale & Knavesmire Road, with easy access to the city centre and A64. The property is offered on a furnished basis and briefly comprises; Impressive entrance hall with a splendid staircase leading through to a stunning sitting room with windows to two elevations and a stylish fireplace with a contemporary gas burning stove. To the lower ground floor is a utility area and WC, a modern dining kitchen with integrated appliances and door leading out to a south west facing suntrap courtyard. To the first & second floor there are double bedrooms, each having it own en-suite bathroom and dressing area. The property also benefits from a private parking space.

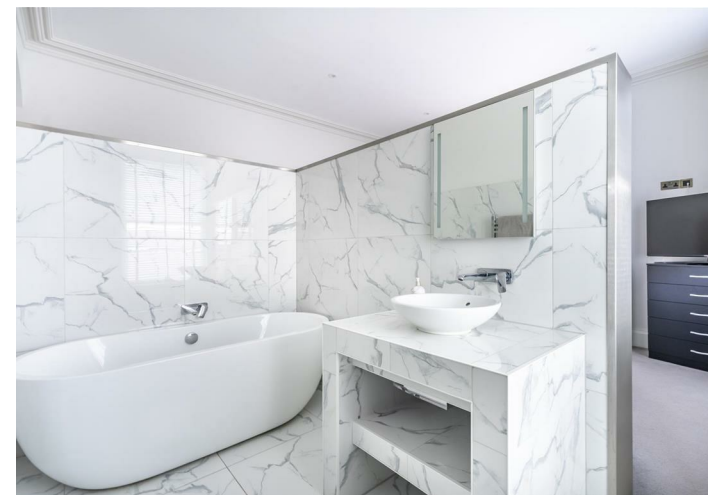
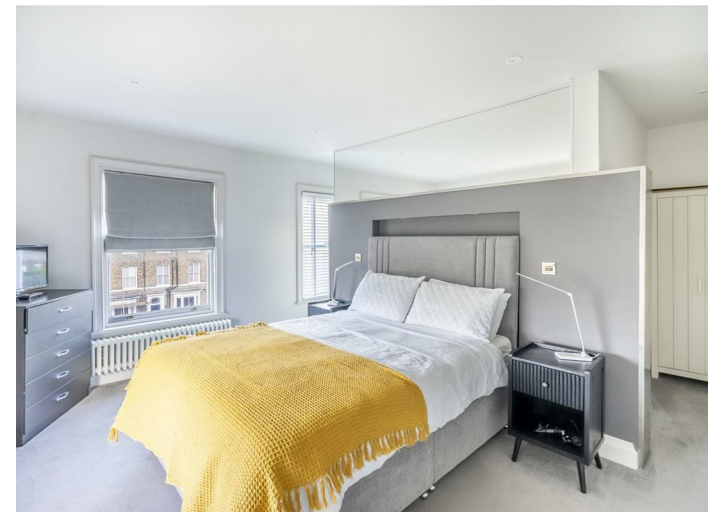
Viewing highly recommended

Available Now

Deposit £1850 / EPC Rating C / Council Tax Band F



TOTAL FLOOR AREA : 1455 sq.ft. (135.2 sq.m.) approx.
 Whilst every attempt has been made to ensure the accuracy of the floorplan, measurements of rooms and any other items are approximate. If included in the plan the gaugelines will form part of the overall floor area and no responsibility is taken for any error, omission or mis-statement. This plan is for illustrative purposes only and should be used as such by any prospective purchaser. The services, systems and appliances shown have not been tested and no guarantee as to their operability.
 Made with Metropix ©2020



Ashtons Lettings

01904 731404

lettings@ashtonsnet.com